

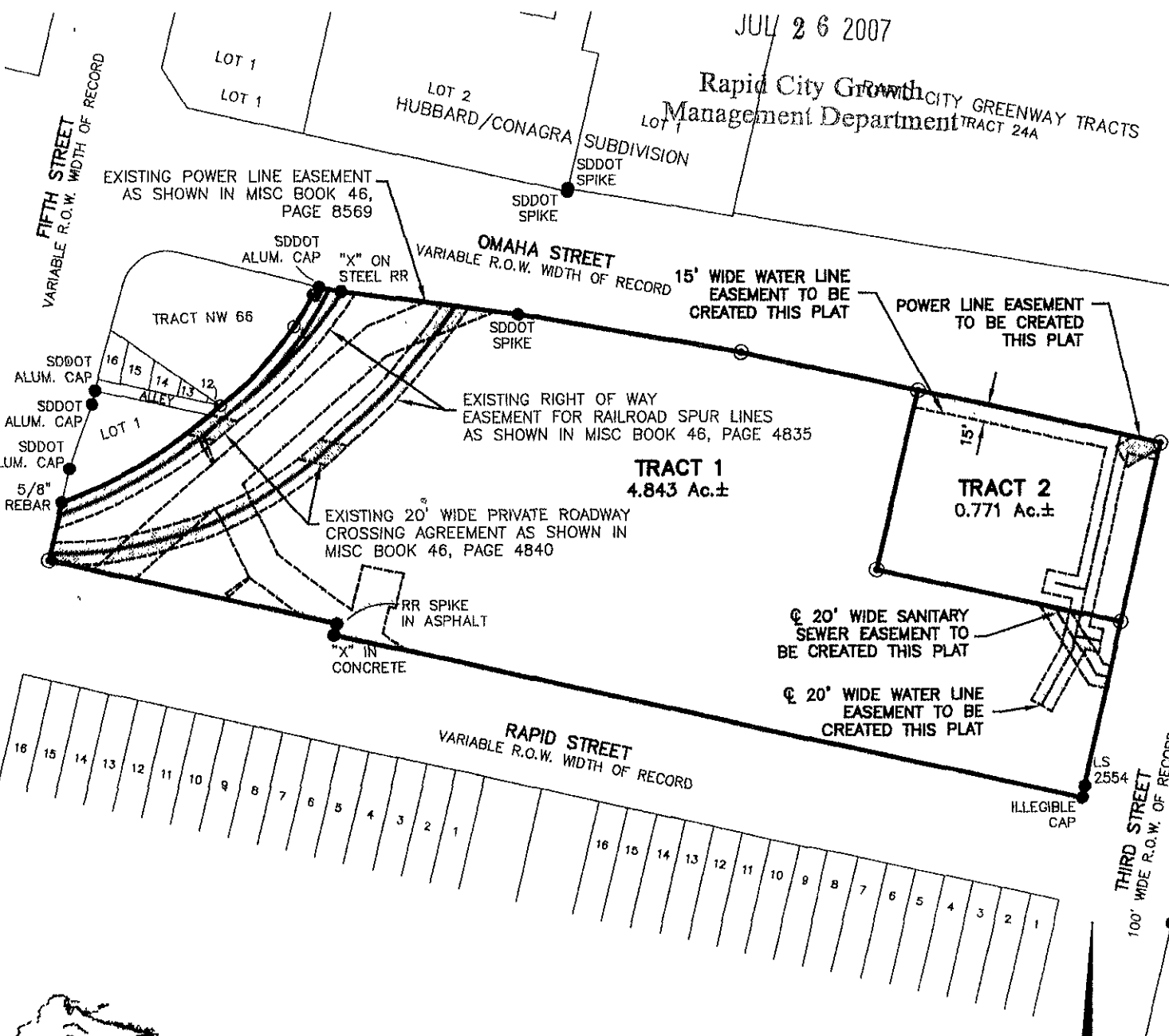
PLAT OF TRACTS 1 AND 2, TUSCANY SQUARE SUBDIVISION

(formerly the balance of Dan's Supermarket Tract Revised)
LOCATED IN BLOCKS 66 AND 67
OF THE ORIGINAL TOWNSITE OF
RAPID CITY, PENNINGTON COUNTY, SOUTH DAKOTA

PECEIVED

JUL 26 2007

Rapid City Growth Management Department CITY GREENWAY TRACTS TRACT 24A



Renner Associates, LLC.

616 Sixth St. * Rapid City, SD 57701 * 605/721-7310
FAX: 605/721-7313 * E-MAIL: Gary@RennerAssoc.com
* Spearfish 605/717-0016 *



CITY HALL 1903