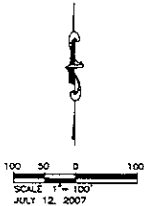


NOTE: TOPOGRAPHIC INFORMATION GRAPHICALLY BOULDED FROM THE DATA NOT FIELD VERIFIED.

SHEET 14 OF 14



AREAS OF DEVELOPMENT

RESIDENTIAL LOTS	25,200	Sq. Ft.
STORAGE LOTS (GARAGE & LOTS)	4,400	Sq. Ft.
TOTAL OF LOT	29,600	Sq. Ft.
NET AREA	62,000	Sq. Ft.
NUMBER OF LOTS	120	
AVERAGE LOT SIZE	5,166	Sq. Ft.

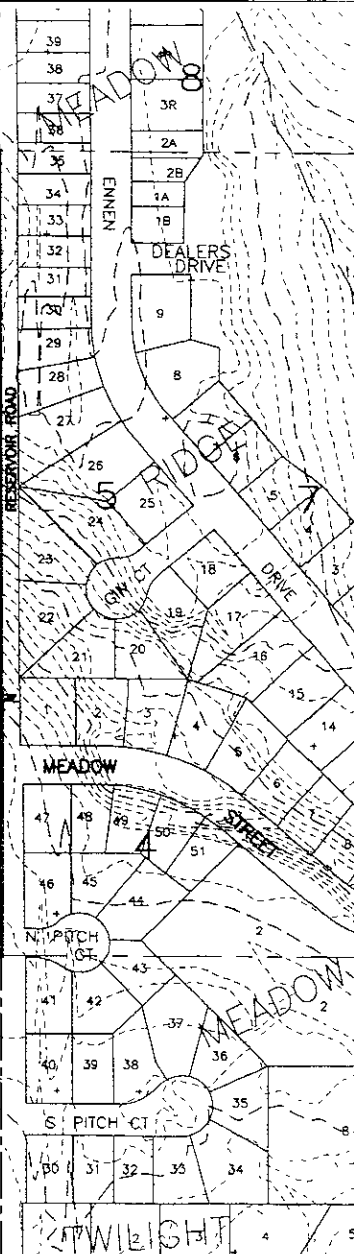
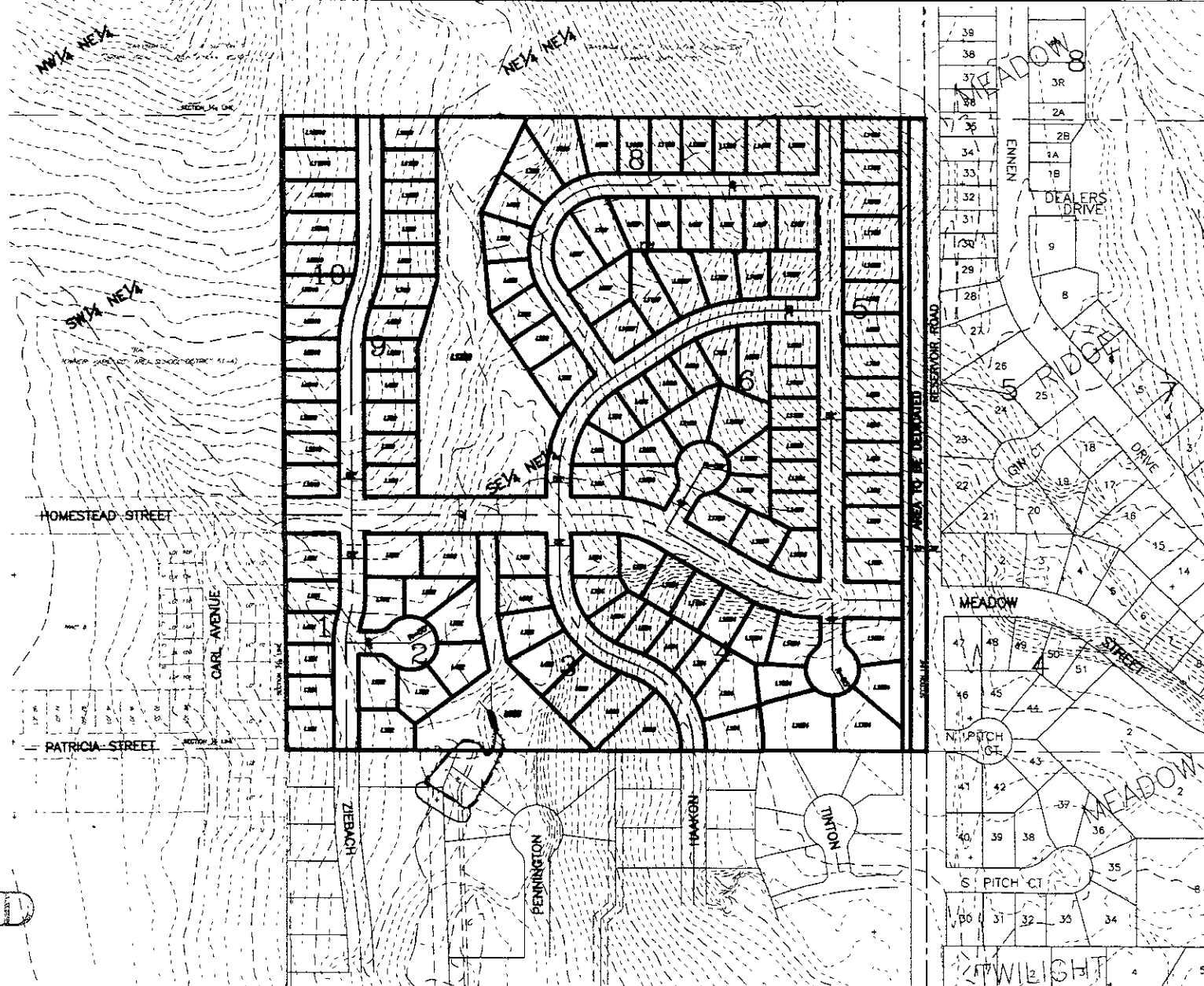
STREET FRONT OF WAY DIMENSIONS

WALKWAY	70	FT.
GRASS-CHALKLINE	20	FT.
LANE	40	FT.
GRASS-TO-GRASS WIDTH	50	FT.

BLOCKS (PART LOT 1 OF BLOCK 1)

BLOCK 1	0	LOTS
BLOCK 2	0	LOTS
BLOCK 3	0	LOTS (1 STORAGE LOT)
BLOCK 4	10	LOTS
BLOCK 5	14	LOTS
BLOCK 6	20	LOTS
BLOCK 7	10	LOTS
BLOCK 8	10	LOTS
BLOCK 9	10	LOTS (1 STORAGE LOT)
BLOCK 10	10	LOTS

RESIDENTIAL LOTS	120
STORAGE LOTS	1



GENERAL INFORMATION

THIS PLAN IS MADE IN ACCORD WITH THE PROVISIONS OF THE SUBDIVISION ACT AND THE SUBDIVISION ACT REGULATIONS. THE LOTS ARE TO BE BOUND BY THE LINES SHOWN ON THIS PLAN. THE LOTS ARE TO BE BOUND BY THE LINES SHOWN ON THIS PLAN. THE LOTS ARE TO BE BOUND BY THE LINES SHOWN ON THIS PLAN.

REFERENCES

DATE	
REVISION	

LAYOUT PLAN

SHEET 14 OF 14

RECEIVED

JUL 30 2007