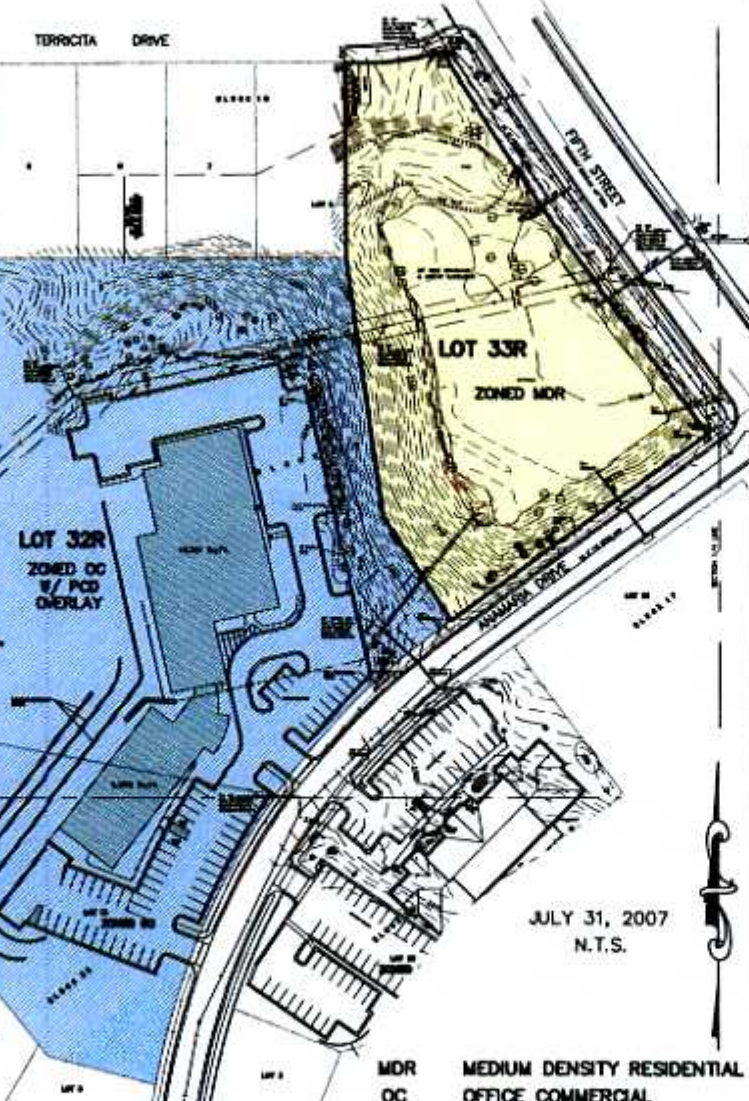


EXHIBIT 'A'
EXISTING FUTURE LAND USE MAP
 LOT 33R OF BLOCK 18
 LOCATED IN THE SE¼ OF THE NW¼,
 SECTION 13, T1N, R7E, B.H.M.,
 RAPID CITY, PENNINGTON COUNTY, SOUTH DAKOTA

TERRICITA DRIVE

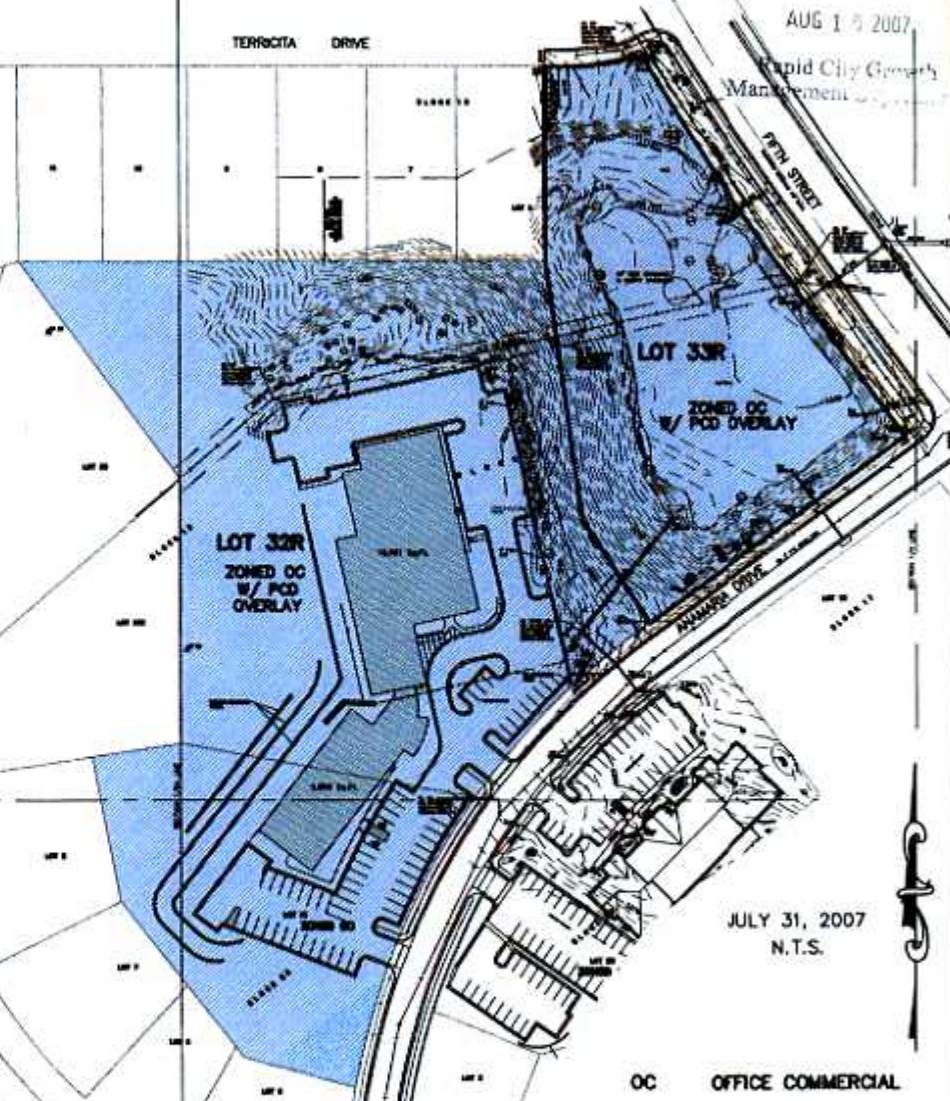


JULY 31, 2007
N.T.S.

MOR MEDIUM DENSITY RESIDENTIAL
OC OFFICE COMMERCIAL

EXHIBIT 'A'
PROPOSED FUTURE LAND USE MAP
 LOT 33R OF BLOCK 18
 LOCATED IN THE SE¼ OF THE NW¼,
 SECTION 13, T1N, R7E, B.H.M.,
 RAPID CITY, PENNINGTON COUNTY, SOUTH DAKOTA

TERRICITA DRIVE



JULY 31, 2007
N.T.S.

OC OFFICE COMMERCIAL

RECEIVED
 AUG 1 9 2007
 Rapid City Growth
 Management