

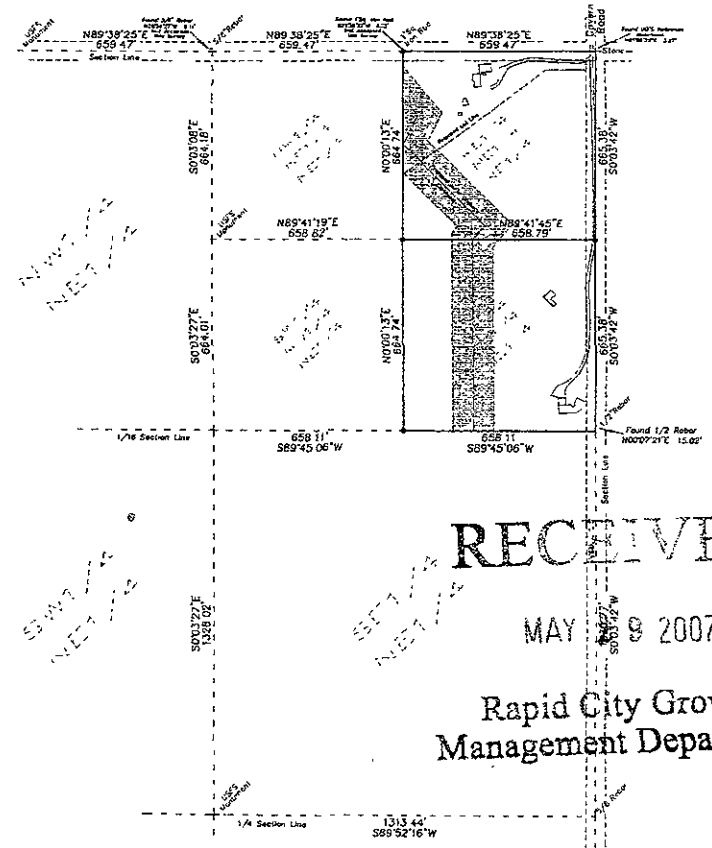
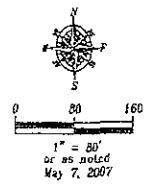
SITE PLAN

LEGEND

- * = Found Survey Monument as noted
- ⊙ = Set Rebar with cap marked "RW Fisk 6565"
- = Found Stone
- ▲ = Control Point

SURVEYOR'S NOTES

See Plat Book 24 Page 38 for record information.
 Dates of Bearings:
 CPS Observation
 Utility and Minor Drainage Easements 'X' on the interior side of all lot lines.
 All Major Drainage Easements shown herein shall be kept free of all obstructions including but not limited to buildings, walls, fences, hedges, trees & shrubs. These easements grant to all public authorities the right to construct, operate, maintain, inspect, and repair such improvements and structures as it deems expedient to facilitate drainage from any source.



BOUNDARY SURVEY

Scale 1"=200'

Site Plan and Boundary Survey
 NE 1/4 NE 1/4 NE 1/4 and SW 1/4 NE 1/4 NE 1/4
 all located in
 Section 14, T1N, R6E, B.H.M.
 Pennington County, South Dakota

1022 Main Street
 P.O. Box 8134
 Rapid City, South Dakota
 57709
 (605) 348-1526
 (605) 348-1113 (fax)

Fisk Land Surveying
 & Consulting
 Engineers, Inc.

Surveyed by B.M.
 Date 4/25/07
 Drawn by R.W. BL
 Date 5/7/07
 Checked by RW

Revisions
 Project No
 07-04-06
 Sheet
 1
 of
 4