

Map of Lots 1 and 2 of Ratigan Subdivision

(formerly all of NE1/4 NE1/4 NE1/4 and SE1/4 NE1/4 NE1/4 of Section 14, T1N, R6E, BHM)

Located in the NE1/4 of Section 14, T1N, R6E, BHM,

07PL079

Pennington County, South Dakota



1" = 300'
May 7, 2007
Revised May 23, 2007

LEGEND

- = Found Survey Monument as noted
- ⊙ = Set Rebar with cap marked "RW Risk 0560"
- = Found Stone

SURVEYOR'S NOTES

See Plat Book 24 Page 36 for record information

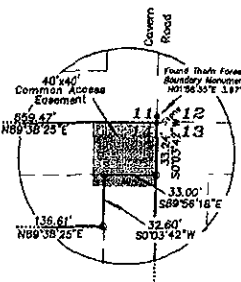
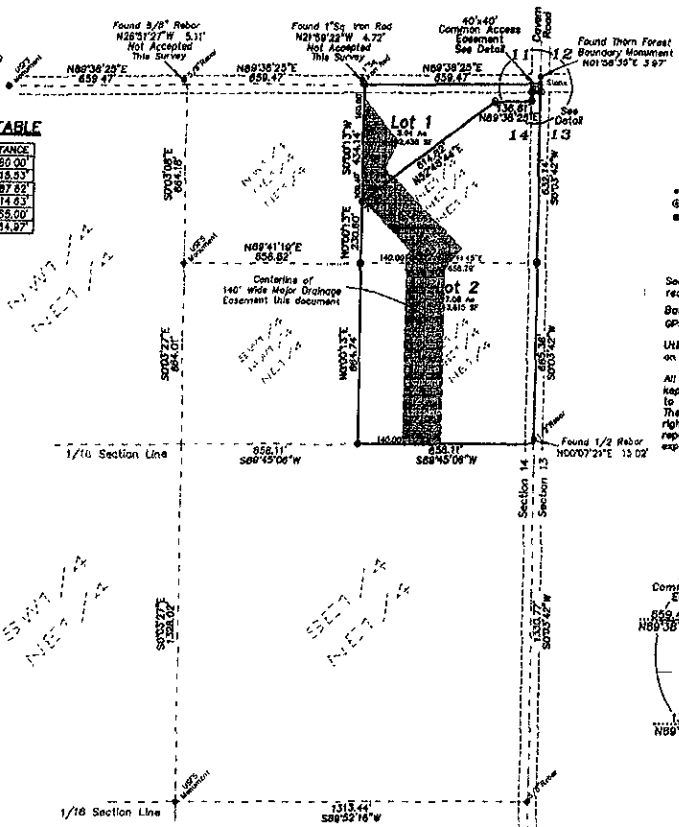
Basis of Bearings:
GPS Observation

Utility and Minor Drainage Easements 8' on the interior side of all lot lines.

All Major Drainage Easements shown hereon shall be kept free of all obstructions including but not limited to buildings, walls, fences, roads, trees & shrubs. These easements grant to the public authorities the right to construct, operate, maintain, repair, and repair such improvements and structures as it deems expedient to facilitate drainage from any source.

EASEMENT LINE TABLE

NUM	BEARING	DISTANCE
11	S40°00'00"E	80.00'
12	S28°58'07"W	718.53'
13	S44°53'42"E	87.69'
14	S44°53'42"E	374.93'
15	N39°00'00"E	65.00'
16	S0°00'12"W	664.87'



Detail
Not to Scale