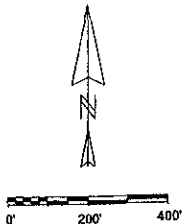
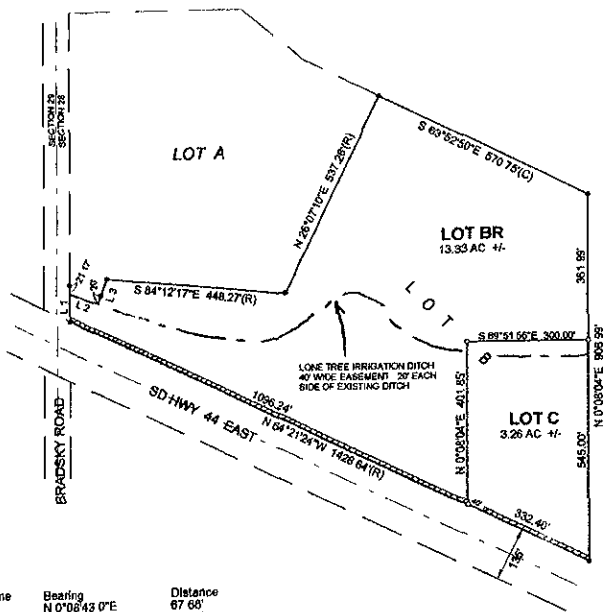


07SV033

LOT BR AND LOT C OF TRACT 1 IN H - O SUBDIVISION
 (FORMERLY LOT B OF TRACT 1 IN H - O SUBDIVISION)
 LOCATED IN SW1/4NW1/4 & NW1/4SW1/4 OF SECTION 28, T1N, R9E, B.H.M.
 PENNINGTON COUNTY, SOUTH DAKOTA



PREPARED BY
 HANSON SURVEYING & MAPPING
 832 HORACE MANN DRIVE
 RAPID CITY, SD 57701
 605-398-9652

June 7, 2007

Line	Bearing	Distance
1	N 0°08'43.0"E	67.60'
2	S 70°44'17.0"E	77.96'
3	N 19°16'43.0"E	84.54'

NOTE: An 8' Utility & Minor Drainage Easement shall exist on the interior side of all lot lines

- Found Survey Monument
- Set 5/8" Rebar with Plastic cap marked "Hanson #6251"
- (R) Survey Information of Record
- (M) Measured this survey
- (C) Calculated Survey Information
- Non-Access Easement