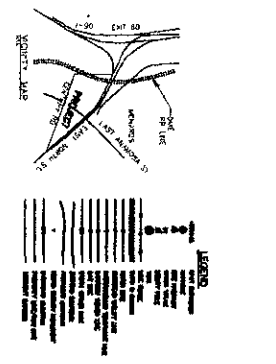
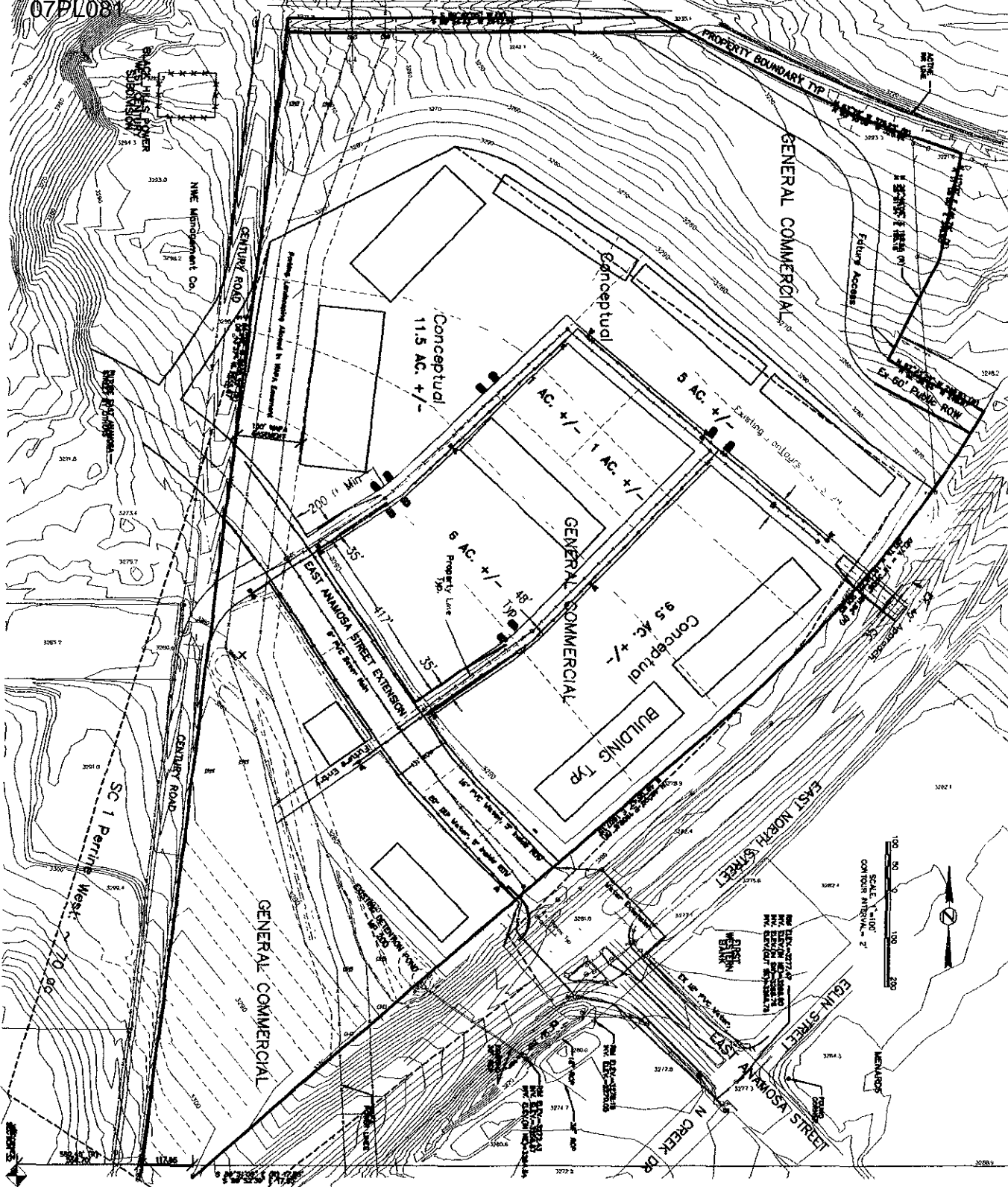
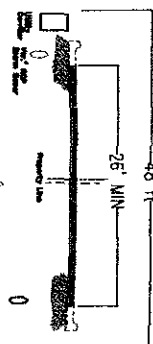


07PL081



TRACT ONE (1) OF CENTURY 711 SUBDIVISION, IN THE CITY OF RAIN CITY, AS SHOWN BY THE PLAT OF SAID TRACT, TOGETHER WITH THE PART OF TRACT 10 OF PLATS OF THE 186 PERMANENT COUNTY, SOUTH DIVISION, ZONING General Commercial



Internal Access and Utility Easement (ITE) No parking within or bordering this 26' minimum drive

General Notes: 1. Intended for PTC review only. It is intended to be approved for PTC review only. 2. Applicant shall verify all information provided for PTC review. 3. All information of Public City, including, but not limited to, zoning, utility, and other information, shall be verified by the applicant. 4. Water and sewer regulations per city requirements.

RECEIVED

JUN 08 2007

Rapid City Growth
 Planning and Development Department
 Management Services Division
 500 East 8th Street
 Rapid City, SD 57102
 605.371.5500

0393 Anamosa Crossing, Layout, Conceptual Plan
 CENTURIA CONSULTANTS
 1000 East 10th Street
 Rapid City, SD 57102
 605.371.5500