

PREPARED BY: City Attorney's Office
300 Sixth Street
Rapid City, SD 57701
(605) 394-4140

STATE OF SOUTH DAKOTA)
)ss.
COUNTY OF PENNINGTON)

**RESOLUTION OF VACATION
OF NON-ACCESS EASEMENT**

WHEREAS it appears that the 20 foot wide portion of the non-access easement on Lot 1 of Block 9 of Red Rock Estates, Section 29, T1N, R7E, BHM, Rapid City, Pennington County, South Dakota, more generally described as being located northwest corner of the intersection of Prestwick Road and Muirfield Drive, is no longer needed for public purposes; and

WHEREAS the owner(s) of the above-described property desire that said the 20 foot wide portion of the non-access easement be vacated and released.

WHEREAS the Vacation of _____ Easement resolution contained in the City of Rapid City City Council minutes of the March 19, 2007 meeting contained an erroneous Title.

NOW THEREFORE, BE IT RESOLVED by the City of Rapid City that the Corrective Resolution is here by entered into to correct the previous resolution on file.

NOW THEREFORE, BE IT RESOLVED, by the City of Rapid City, that the 20 foot wide portion of the non-access easement heretofore described, and as shown on Exhibit "A", attached hereto and incorporated herein by this reference, is not needed for a public purpose and is hereby vacated.

Dated this ____ day of _____, 2007.

CITY OF RAPID CITY

Mayor

ATTEST:

Finance Officer

(SEAL)

07ve003

EXHIBIT A

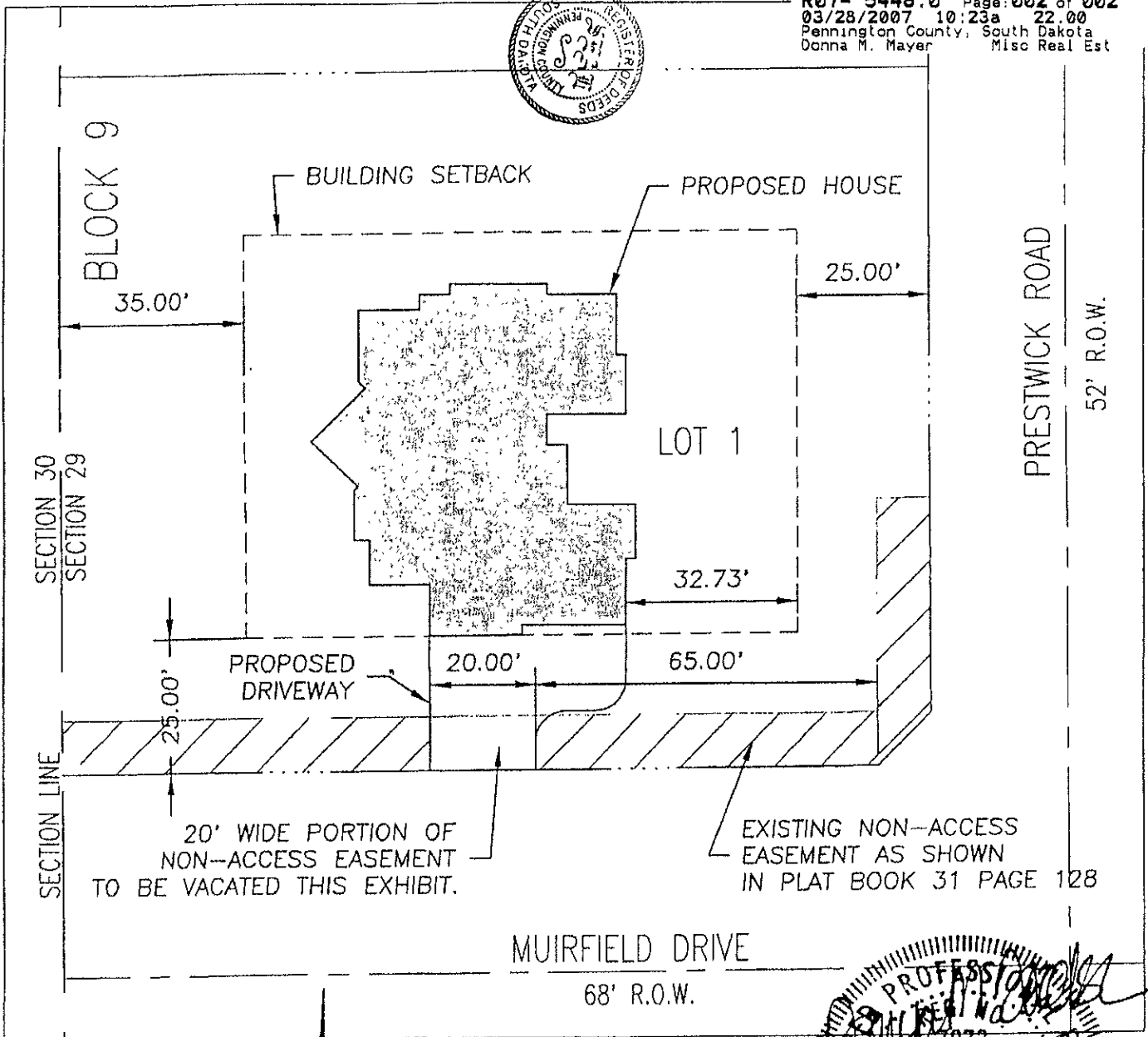
20' WIDE PORTION OF NON-ACCESS EASEMENT TO BE VACATED
LOCATED IN LOT 1 OF BLOCK 9, RED ROCK ESTATES

LOCATED IN THE SW $\frac{1}{4}$ NW $\frac{1}{4}$ OF SECTION 29, T1N, R7E, BHM
RAPID CITY, PENNINGTON COUNTY, SOUTH DAKOTA



Book 167
Page 7605

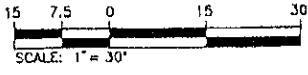
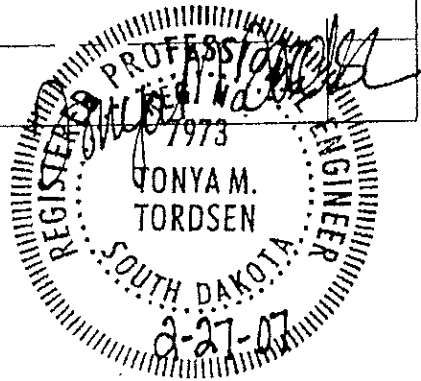
R07- 5448.0 Page: 002 of 002
03/28/2007 10:23a 22.00
Pennington County, South Dakota
Donna M. Mayer Misc Real Est



RECEIVED

FEB 27 2007

Rapid City Growth
Management Department



NON-ACCESS EASEMENT VACATION	
JOB NO: 07-0453	REV 1:
DATE: 1-22-07	REV 2:
DRAWN BY: JS	REV 3:

D.D.I.
DREAM DESIGN INTERNATIONAL, INC.
 PROFESSIONAL STRUCTURAL & CIVIL ENGINEERING CONSULTANTS
 528 KANSAS CITY ST., SUITE 4, RAPID CITY, SD 57701
 PH 605-348-0538 FAX 605-348-0545 EMAIL engineers@dreamdesigninc.com