

Plat of Lots 1 & 2 of Best Subdivision
 (formerly all of Lot 8R of Block 3 of the NW1/4 NE1/4 of Section 25, T2N, R7E, BHM)
 located in the NW1/4 NE1/4 of Section 25, T2N, R7E, BHM
 Rapid City, Pennington County, South Dakota

07SV036

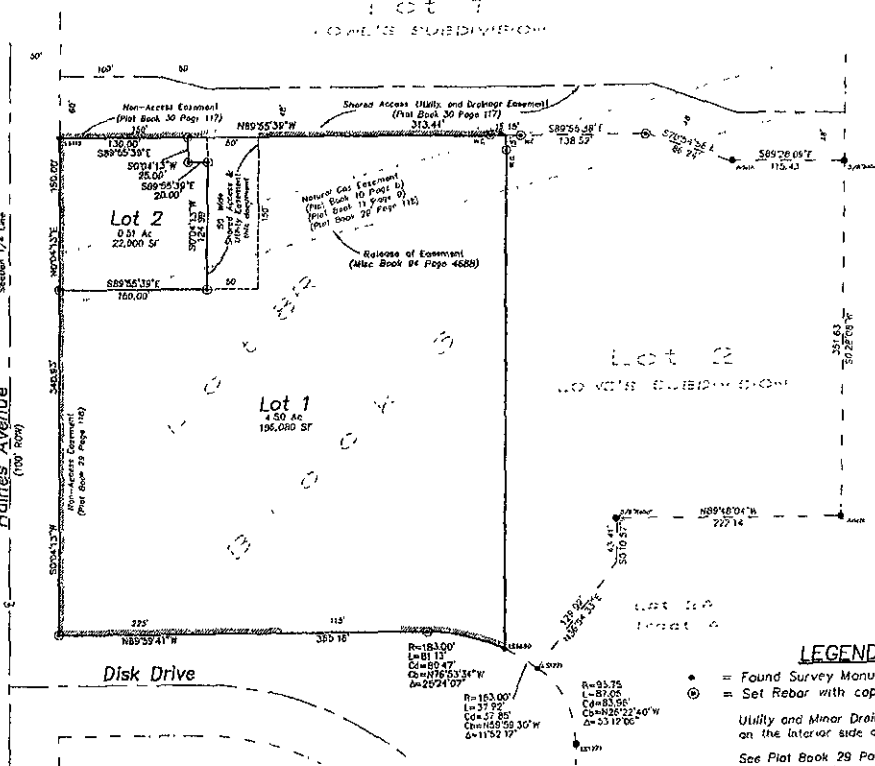
Prepared by:
 Fisk Land Surveying &
 Consulting Engineers, Inc.
 P.O. Box 8154
 Rapid City, South Dakota 57709
 605-348-1536
 Project # 07-06 05



1" = 80'

Base of Bearings
 GPS Observation

PRELIMINARY
 Haines Avenue
 (100' R.O.W.)
 Section 1/4 Line



LEGEND

- * = Found Survey Monument as noted
- ⊙ = Set Rebar with cap marked "RW Fisk 6555"

Utility and Minor Drainage Easements 8'
 on the interior side of all lot lines

See Plat Book 29 Page 118 for
 record information

Black Hills Corporation Right-of-way
 (Misc Book 58 Page 5478)

Black Hills Power Right-of-way
 (Misc Book 120 Page 2852)

R=163.00'
 L=81.13'
 C=85.47'
 Ch=178.5334"W
 Ch=2074.07'

 R=163.00'
 L=37.92'
 C=37.85'
 Ch=145.5930"W
 Ch=11752.17'

 R=93.75'
 L=87.05'
 C=83.96'
 Ch=225.2240"W
 Ch=5317.06'