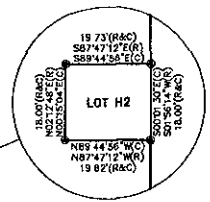
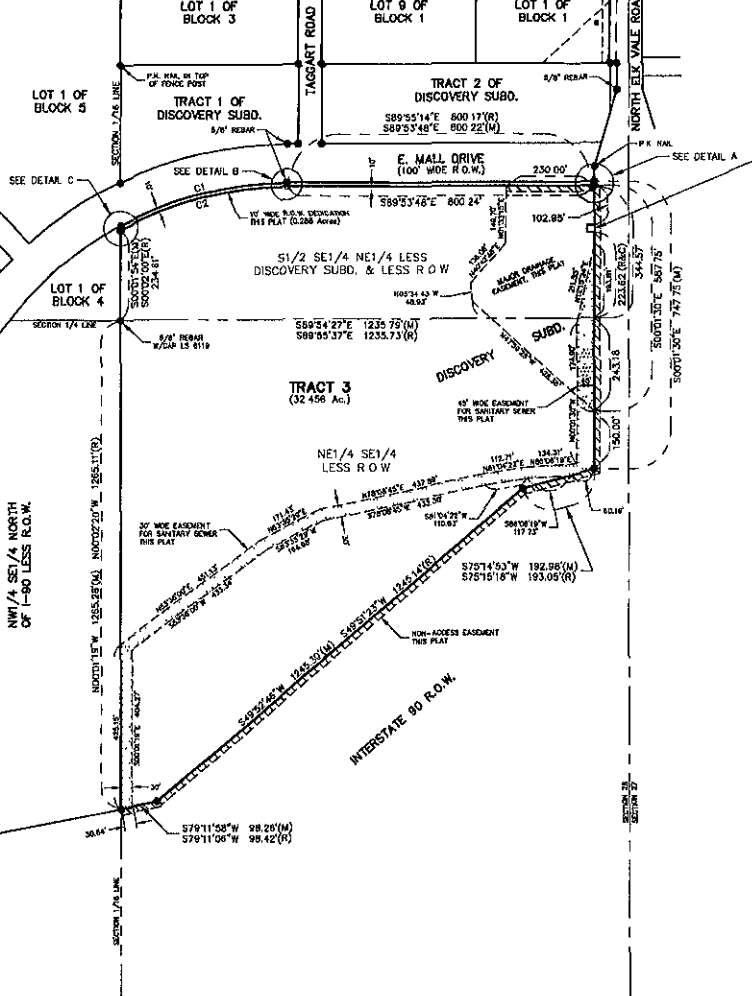


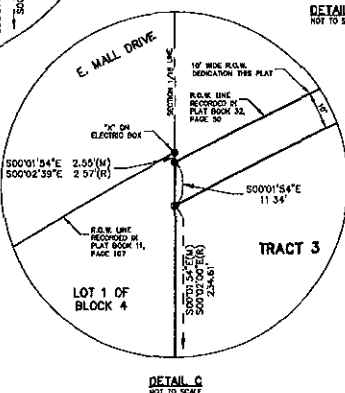
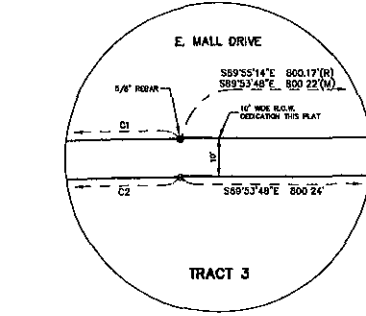
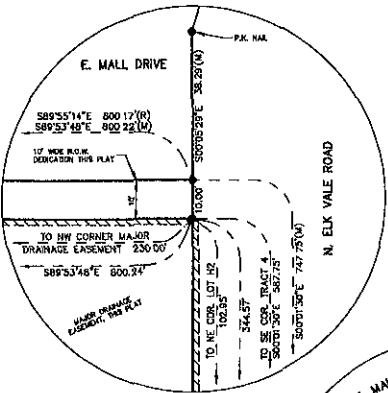
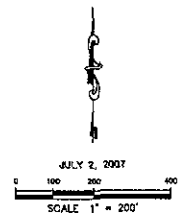
Plot of Tract 3 of Discovery Subdivision and dedicated public right of way  
 formerly NE1/4 SE1/4 LESS R.O.W. and S1/2 SE1/4 NE1/4 Less Discovery Subdivision Less Lot H2 & Less R.O.W.  
 located in NE1/4 SE1/4 and in SE1/4 NE1/4 of Section 28, T2N, R6E, B1M,  
 Rapid City, Pennington County, South Dakota

Prepared by  
 FMG Engineering  
 3700 Sturgis Road  
 Rapid City, SD 57702  
 605/342-4105

07PL089



NOTE RECORD BEARINGS AND DISTANCES FOR LOT H2 ARE BASED ON THE SOUTH DAKOTA STATE PLANE COORDINATE SYSTEM - SOUTH ZONE NAD 83. B.S. 1"=0.999731902 AS PER THE HIGHWAY PLAT FOR SAID LOT



NOTES

- Denotes set 5/8" rebar with survey cap marked "FMG INC. LS 5D #118"
  - Denotes Found Survey Monument (5/8" rebar with survey cap LS 2652 unless otherwise noted)
  - Denotes Set 3/8" rebar (no cap) at right-of-way line PC's and PT
  - (R) Denotes Recorded previous plat or description
  - (M) Denotes Measured in the survey
  - (C) Denotes Calculated.
- Scale of Bearings: Per previously recorded plat of I-90 Heartland Business Park.
- Building setback requirements are as stated in the zoning and/or platting regulations.
- Tract 4 in it's entirety is a major drainage easement and a utility easement.
- Any major drainage easement shown hereon shall be kept free of obstructions including but not limited to buildings, walls, fences, fences, trees and shrubs. These easements grant to of public authorities the right to construct, operate, maintain, inspect, and repair such improvements and structures as it deems expedient to facilitate drainage from any source.
- Utility and Water Drainage Easements 5' on the interior sides of all lot lines.
- Total area to be dedicated as Public Right of Way with this plat: 0.288 Acres.

CURVE NO.	CHORD BEARING	CHORD DISTANCE	DELTA	RADIUS	LENGTH
C1(A)	N73°12'24"E	448.87'	28°04'13"	925.00'	453.19'
C1(B)	N78°02'34"E	448.70'	28°04'23"	925.00'	453.22'
C2	N75°54'24"E	448.87'	28°04'14"	915.00'	453.80'

- Denotes Major Drainage Easement this plat.
- Denotes Setback Easement this plat.
- Denotes Non-Access Easement this plat.