

Plat of Lots 1 & 2 of Best Subdivision  
 (formerly all of Lot 8R of Block 3 of the NW1/4 NE1/4 of Section 25, T2N, R7E, BHM)  
 located in the NW1/4 NE1/4 of Section 25, T2N, R7E, BHM  
 Rapid City, Pennington County, South Dakota

07PL088

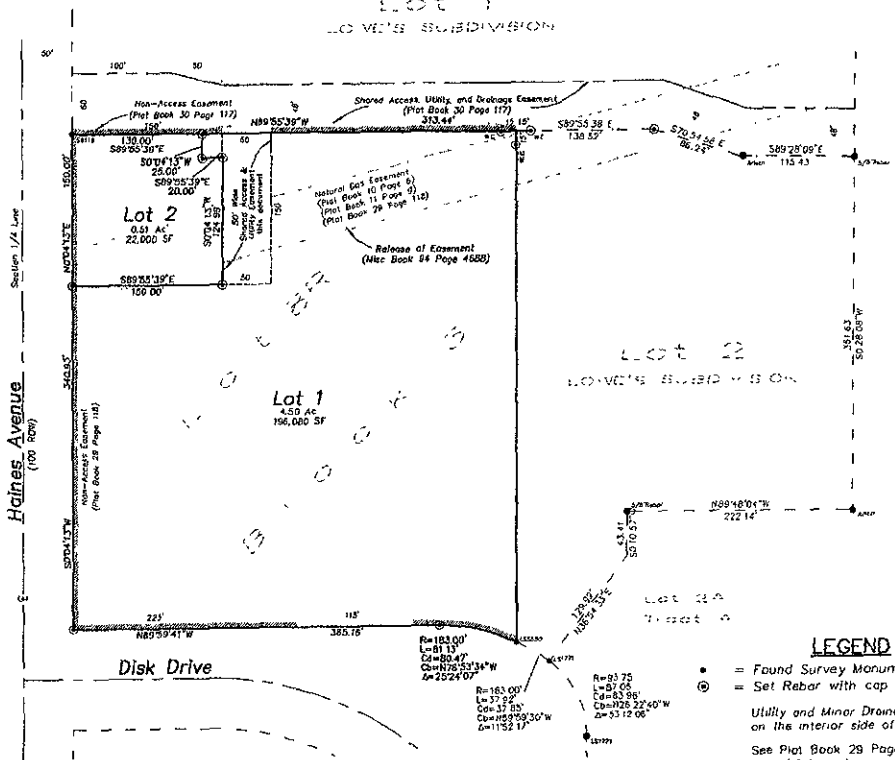
Prepared by:  
 Fisk Land Surveying &  
 Consulting Engineers, Inc.  
 P.O. Box 8154  
 Rapid City, South Dakota 57709  
 605-349-1534  
 Project # 07-06-05



1" = 80'

Basis of Bearings  
 GPS Observation

PRELIMINARY



**LEGEND**

- = Found Survey Monument as noted
- ⊙ = Set Rebar with cap marked "RW Fisk 6565"
- Utility and Minor Drainage Easements 8' on the interior side of all lot lines
- See Plat Book 28 Page 118 for record information
- Black Hills Corporation Right-of-way (Misc Book 58 Page 5478)
- Black Hills Power Right-of-way (Misc Book 120 Page 2852)

$R=183.00'$   
 $L=81.13'$   
 $Cd=89.89'$   
 $Cc=N78^{\circ}53'34"W$   
 $C=2524.07'$   
  
 $R=95.75'$   
 $L=37.66'$   
 $Cd=83.88'$   
 $Cc=N72^{\circ}22'40"W$   
 $C=53.12.06'$   
 $\Delta=1152.17'$