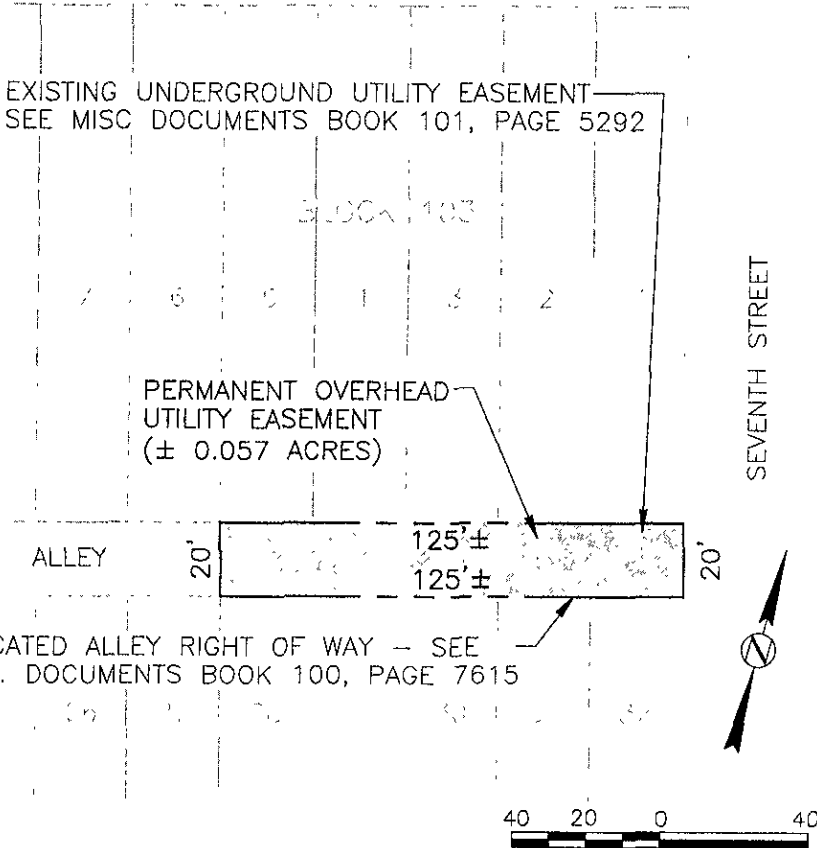


EXHIBIT B
PERMANENT OVERHEAD UTILITY EASEMENT

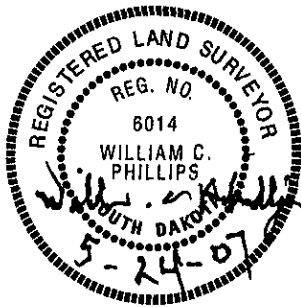
VACATED ALLEY ADJACENT TO LOTS 1-5 AND LOTS 28-32 OF BLOCK 103
ORIGINAL TOWN OF RAPID CITY
LOCATED IN NW 1/4 OF THE NW 1/4 SECTION 1, T1N, R7E, B.H.M.
RAPID CITY, PENNINGTON COUNTY, SOUTH DAKOTA
OWNER: CITY OF RAPID CITY

KANSAS CITY STREET



SURVEYORS CERTIFICATE:

I, WILLIAM C. PHILLIPS, A REGISTERED LAND SURVEYOR IN THE STATE OF SOUTH DAKOTA, DO HEREBY CERTIFY THAT AT THE DIRECTION OF CITY OF RAPID CITY I HAVE PREPARED FROM RECORD DOCUMENTS AND FROM A FIELD SURVEY THE OVERHEAD UTILITY EASEMENT LOCATION SHOWN HEREON AND TO THE BEST OF MY KNOWLEDGE AND BELIEF THE DIMENSIONS SHOWN ARE TRUE AND CORRECT.



PREPARED BY:
enVision Design, Inc
706 WEST BOULEVARD
RAPID CITY, SOUTH DAKOTA

enVision Design

DRAWN BY K. MCGINNESS DATE 05-23-07
CHECKED BY W. C. PHILLIPS DATE 05-23-07