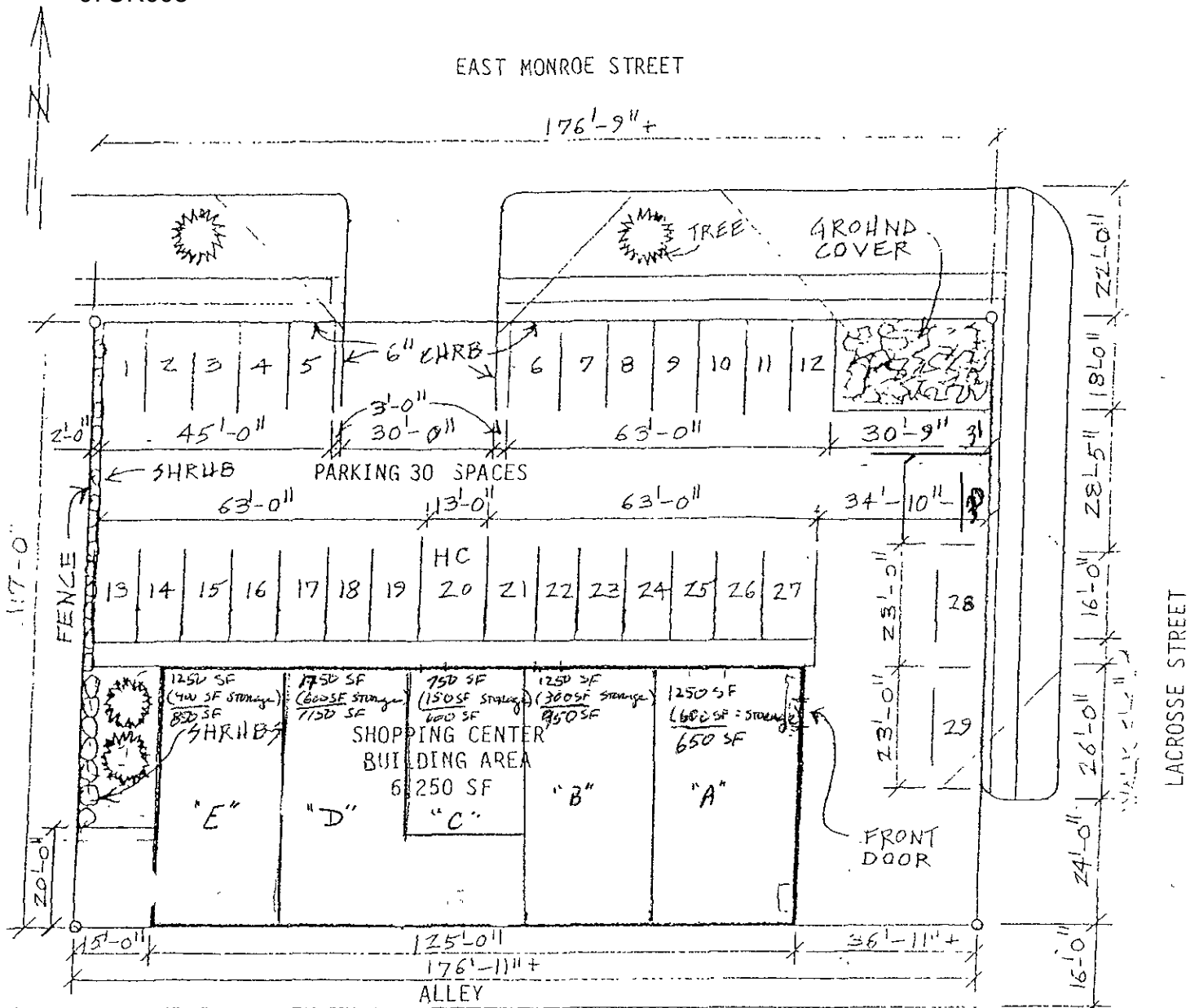


EAST MONROE STREET

176'-9"±



Unit A : Restaurant (Little Caesar's Pizza)

Unit B : JACKPOT CASINO

Unit C : Proposed Expansion on-site liquor

Unit D & E : ORAL Health Clinic

LANDSCAPING

14,327 PTS. REQUIRED

X 1.2 ADJACENT RESIDENTIAL

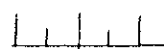
17,193 PTS.

4 LARGE TREES	8,000 PTS. (SPRUCE)
19 SHRUBS	4,750 PTS.
45 SQ. YDS.	
GROUND COVER	4,500 PTS.
	<u>17,250 PTS.</u>

PROPERTY DEVELOPMENT

9/24/92

30 20 10



F
LOT
WISI
RAP:

1) MEDICAL FACILITY

3000 SF - 1000 =

2000 @ 4/1000 = 8

2) CASINO

2000 SF - 450 =

1550 @ 10/1000 = 15.5

3) Restaurant

1250 SF - 600 =

650 @ 11/1000 = 7.22

HENG ARCHITECTS - ENGINEERS

115 St. Joseph Street, Rapid City, South Dakota 57701
605 343-8432

PARKING STALLS = 31 STALLS