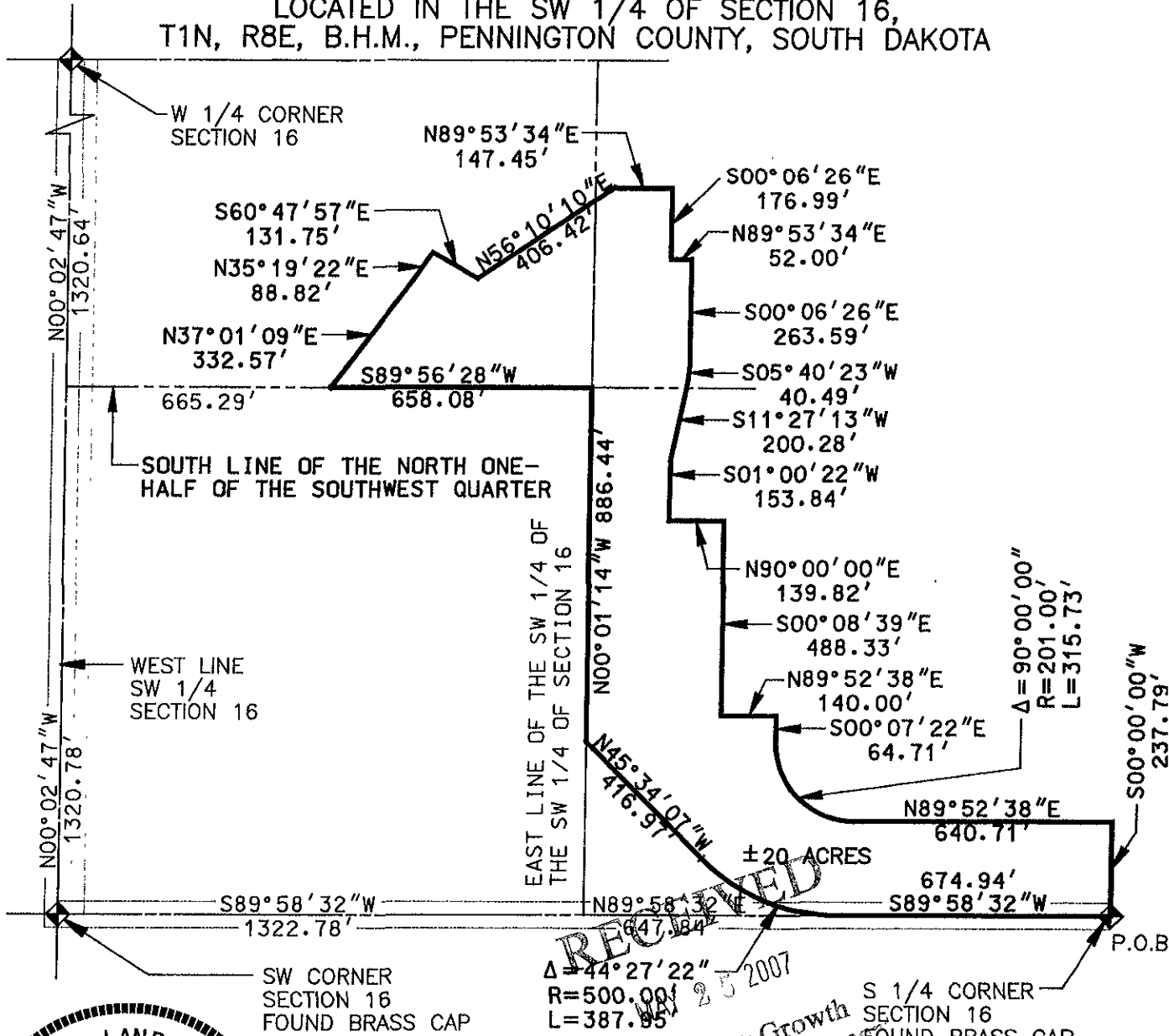


# PLUM CREEK DEVELOPMENT

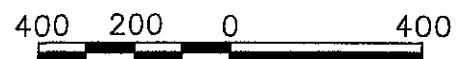
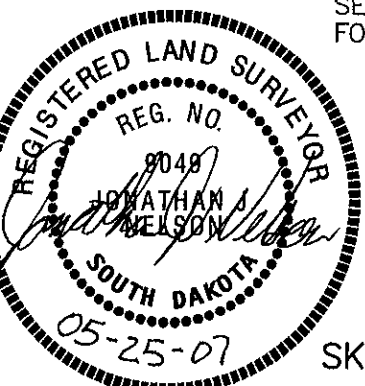
## PARCEL J (MEDIUM DENSITY RESIDENTIAL)

LOCATED IN THE SW 1/4 OF SECTION 16,  
T1N, R8E, B.H.M., PENNINGTON COUNTY, SOUTH DAKOTA



RECEIVED  
MAY 25 2007

Rapid City Growth Management Department



SCALE: 1" = 400'

SKETCH FOR ZONING DESCRIPTION



# PLUM CREEK DEVELOPMENT

SHEET TITLE:  
PARCEL J

SHEET  
3 OF 3