

RECEIVED

MAY 25 2007

Rapid City Growth
Management Department

ELK COUNTRY
ESTATES

ARCHITECTURE AND ENGINEERING SURVEYING
TOWN AND COUNTRY
PLANNING AND DESIGN
1740 W. 13TH ST. SUITE 100
RAPID CITY, SD 57701
TEL: (605) 342-1211
FAX: (605) 342-1211
WWW.TOWNANDCOUNTRY.COM

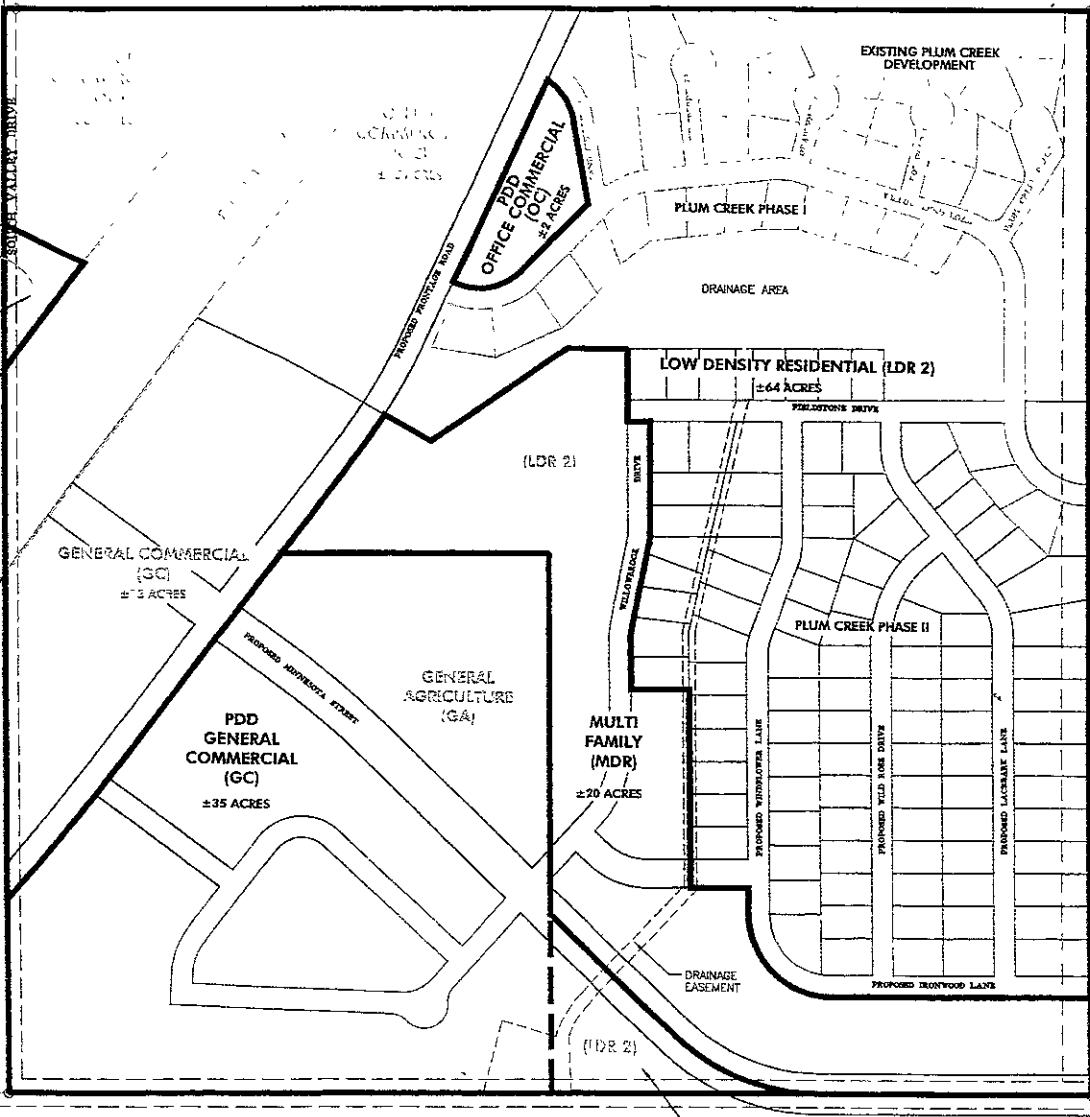


PLUM CREEK
DEVELOPMENT

PLUM CREEK DEVELOPMENT
JOB NUMBER: 05181000 DATE REVISION: RAPID CITY, SOUTH DAKOTA

REVISIONS

SHEET TITLE:
PROPOSED
LAND USE
WITH
PRELIMINARY
LOT LAYOUT
SHEET



GENERAL
COMMERCIAL
(GC)

OFFICE
COMMERCIAL
(OC)
±1 ACRES

GENERAL COMMERCIAL
(GC)
±3 ACRES

PDD
GENERAL
COMMERCIAL
(GC)
±35 ACRES

GENERAL
AGRICULTURE
(GA)

MULTI
FAMILY
(MDR)
±20 ACRES

LOW DENSITY RESIDENTIAL (LDR 2)
±64 ACRES

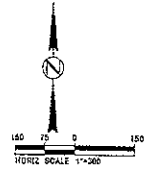
PDD
OFFICE
COMMERCIAL
(OC)
±2 ACRES

PDD
GENERAL
COMMERCIAL
(GC)
±2 ACRES

LEGEND

—— PROPOSED ZONING
—— EXISTING ZONING

NOTE:
THE ACREAGE'S OF THE VARIOUS ZONING
AREAS INCLUDE MINNESOTA STREET.



NOT FOR CONSTRUCTION

SOUTHWEST CORNER
SECTION 16 FOUND
DAVIS MONUMENT

SOUTH 1/4 CORNER
SECTION 16 FOUND
DAVIS MONUMENT