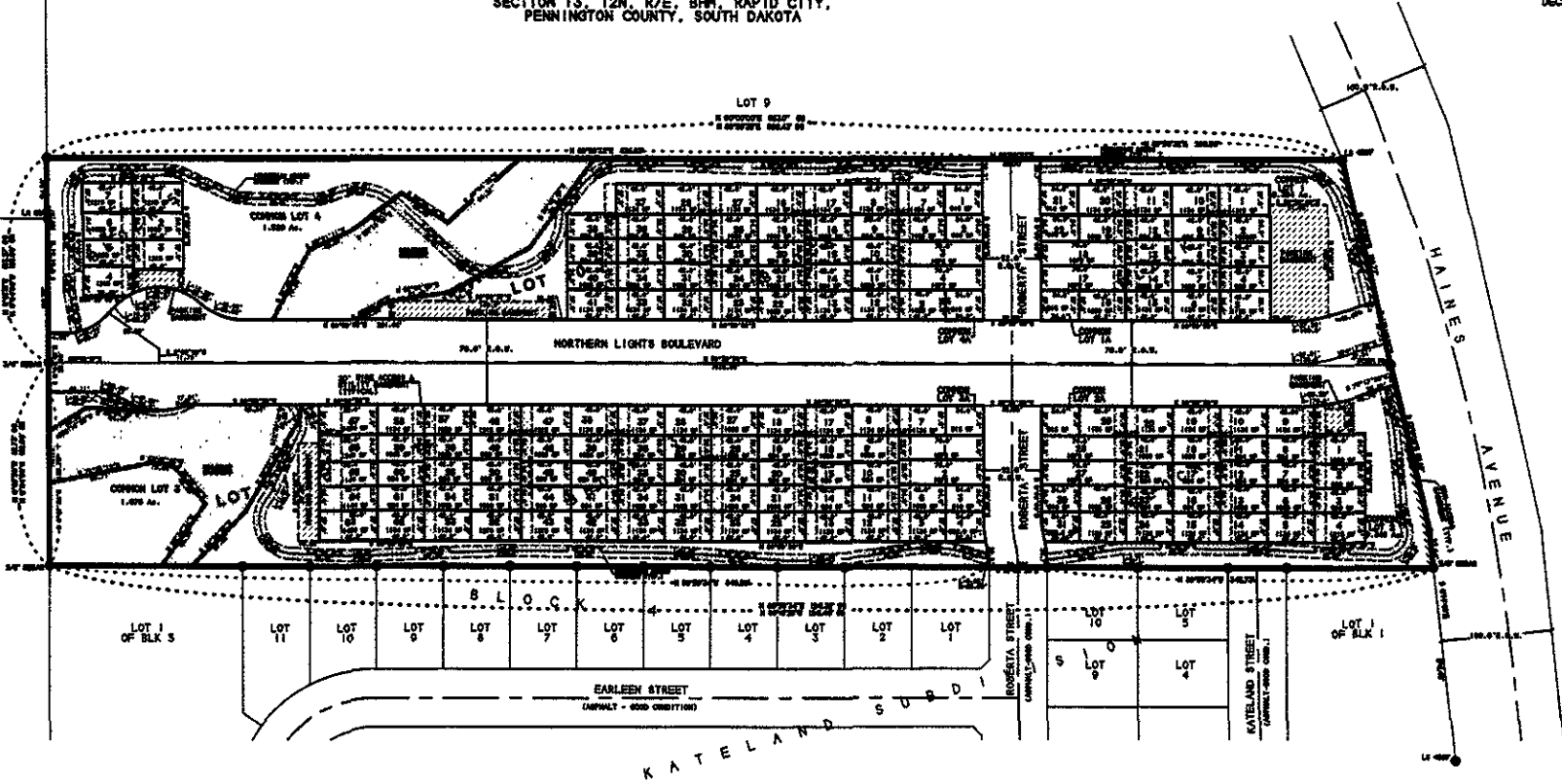


PRELIMINARY PLAT
 OF
 LOTS 1 THRU 21 OF BLOCK 1:
 LOTS 1 THRU 311 OF BLOCK 2:
 LOTS 1 THRU 87 OF BLOCK 3:
 LOTS 1 THRU 41 OF BLOCK 4:
 AND COMMON LOTS 1, 1A, 2, 2A, 3, 3A, 4 AND 4A
 OF THE VILLAGE AT TURKEY FOOT SUBDIVISION
 (FORMERLY LOTS 10 & 11 OF MADISON'S SUBDIVISION)
 ALL LOCATED IN THE SW1/4 OF THE SW1/4 OF
 SECTION 13, T2N, R7E, B1M, RAPID CITY,
 PENNINGTON COUNTY, SOUTH DAKOTA

SCALE: 1" = 50'
 DECEMBER 4, 2006

LOT 1 OF BLK 1 OF VILLAGE AT TURKEY FOOT SUBDIVISION

SW1/4 MADISON'S LESS SW1/4 OF SECTION 13



AREA DEDICATED TO PUBLIC RIGHT OF WAY (R.O.W.)
 NORTHERN LIGHTS BOULEVARD 3,120 Ac.
 ROSSETTA STREET 0,348 Ac.
 TOTAL 3,468 Ac.

BRITTON ENGINEERING & LAND SURVEYING, INC.
 8035 BLACK HAWK ROAD, SUITE #5
 BLACK HAWK, SD 57118
 PH. (605) 716-7988

LOTS 10 & 11 OF MADISON'S SUB.
 LOCATED IN SW1/4 OF THE SW1/4 OF
 SEC. 13, T2N, R7E, B1M, RAPID CITY
 PENNINGTON COUNTY, SOUTH DAKOTA

PRELIMINARY PLAT
 THE VILLAGE AT TURKEY FOOT SUB.

Prepared by	
Checked by	
Drawn by	
Reviewed by	
Approved by	