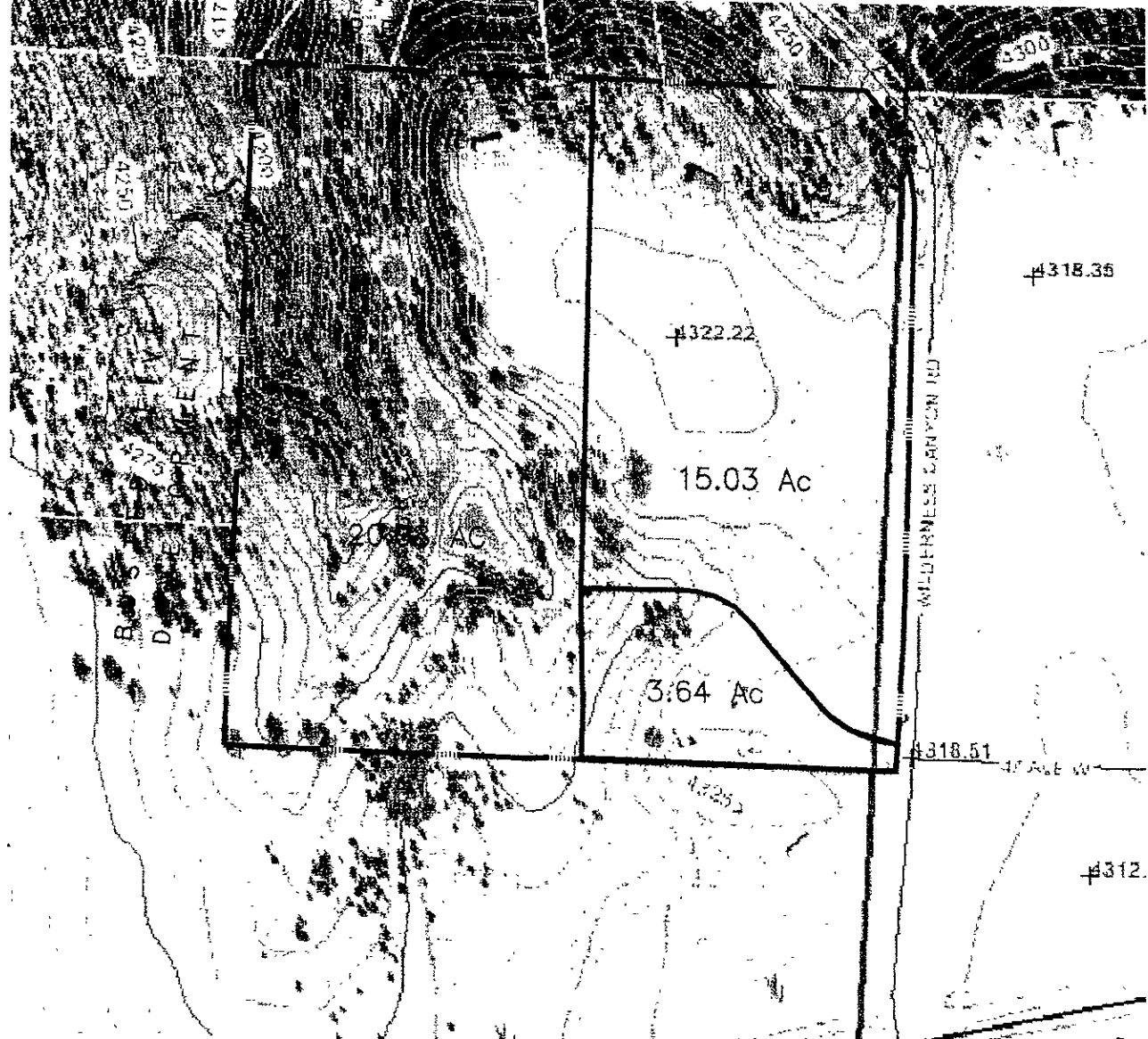


08/11/2006

CHANNON



**PRELIMINARY
DRAWING**

This document is issued
as a preliminary document
for review purposes. It
is not a certified drawing
and is not intended to be
used for construction
purposes.



Boschee Engineering
580 Kansas City Street, Suite 307
Rapid City, South Dakota, 57701
(605) 343-8747
email: boschee_eng@midcontinentwork.com

DRAWN BY	R.E.B.
CHECK DATE	08.18.05
DRAWN	BORDER 12.26.05
PROJECT #	06-0028E
REVISION	
REVISION	
REVISION	

OLIVER PROPERTY
NE1/4SE1/4, SEC. 7, T1S, R7E, BHM
PRELIMINARY LAYOUT