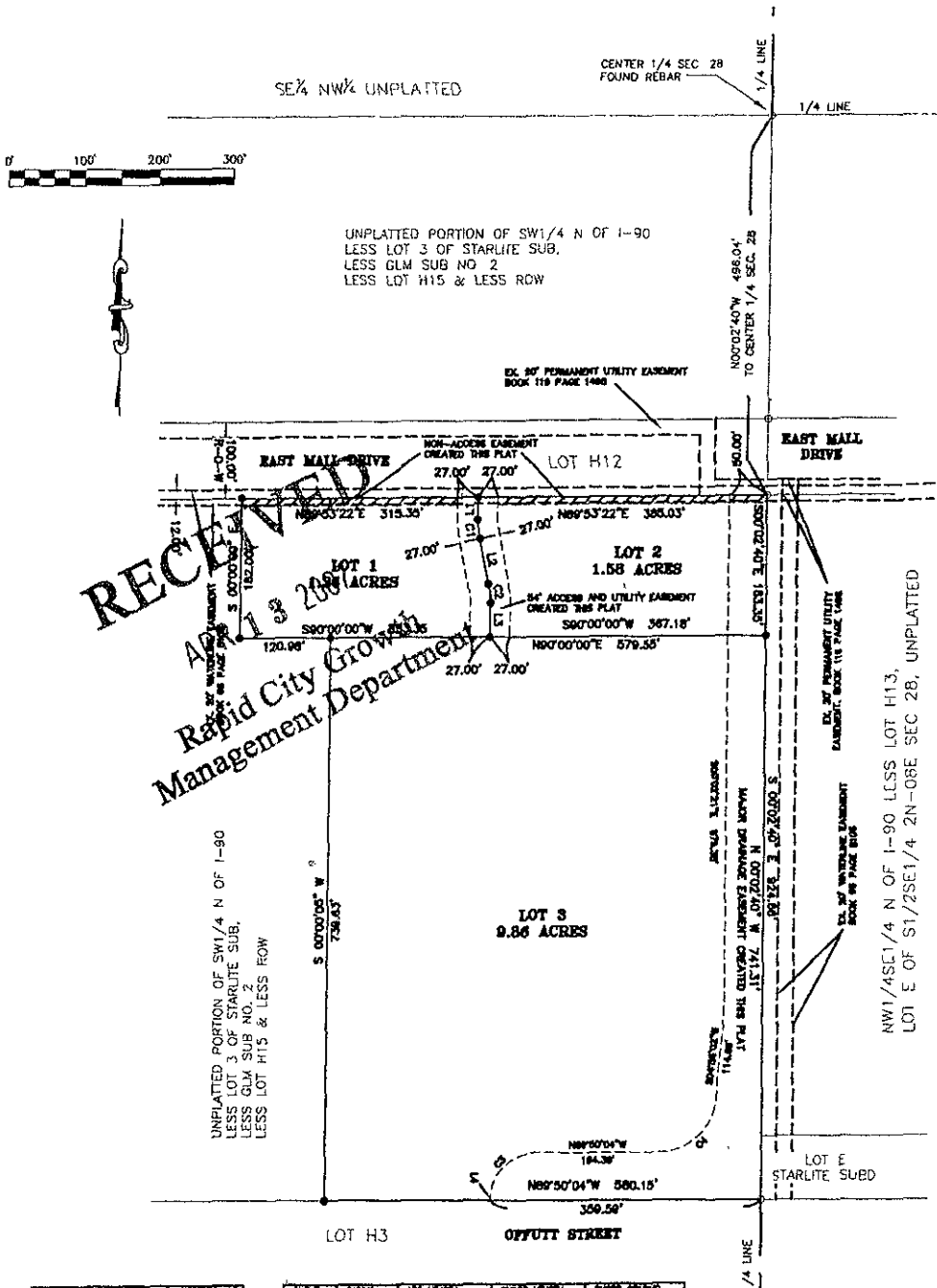


PLAT OF FOREFATHER FLATS SUBDIVISION, LOTS 1, 2 AND 3
 FORMERLY THE UNPLATTED PORTION OF THE NORTH HALF OF THE SOUTHWEST QUARTER OF SECTION 28
 ALL LOCATED IN THE SOUTHWEST QUARTER OF SECTION 28 IN TOWNSHIP 2 NORTH OF RANGE 8 EAST
 OF THE BLACK HILLS MERIDIAN, IN THE CITY OF RAPID CITY, PENNINGTON COUNTY, SOUTH DAKOTA



NW 1/4 SEC 1/4 N OF 1-90 LCSS LOT H13,
 LOT E OF S1/2SE1/4 2N-08E SEC 28, UNPLATTED

LINE	BEARING	DISTANCE
L1	S 00°00'00" W	120.00'
L2	S 00°00'00" W	120.00'
L3	S 00°00'00" W	120.00'
L4	S 00°00'00" W	120.00'
L5	S 00°00'00" W	120.00'

LINE	BEARING	ARC LENGTH	CHORD LENGTH	CHORD BEARING
C1	N 89°50'04" W	164.39'	164.39'	S 00°00'00" W
C2	N 89°50'04" W	580.15'	580.15'	S 00°00'00" W
C3	N 89°50'04" W	580.15'	580.15'	S 00°00'00" W
C4	N 89°50'04" W	580.15'	580.15'	S 00°00'00" W

NOTES:

- MINOR DRAINAGE AND UTILITY EASEMENTS ARE HEREBY ESTABLISHED 8' WIDE ON THE INTERIOR SIDE OF ALL LOT LINES AND RIGHT-OF-WAY. (EXCEPT WHERE MAJOR DRAINAGE EASEMENTS ARE LOCATED)
- TOTAL PLATTED AREA: 12.80 ACRES
- NON-ACCESS EASEMENTS ARE HEREBY ESTABLISHED ALONG THE CORNER LOTS AND AS INDICATED HEREON.
- ALL BUILDERS SHALL MAINTAIN EXISTING DRAINAGE FACILITIES IN ACCORDANCE TO APPROVED CONSTRUCTION PLANS.
- ACCREAGE SHOWN ON LOTS INCLUDE EASEMENTS.
- EXISTING TEMPORARY EASEMENTS ARE NOT SHOWN HEREON.
- BASES OF BEARING FOR THIS PLAT IS GEODETIC NORTH.
- LOT H15 RECORDED IN HIGHWAY PLAT BOOK 11, PAGE 8.
- LOT H3 RECORDED IN PLAT BOOK 2, PAGE 264.

LEGEND:

- Denotes set 5/8" rebar with survey cap marked "ARLETH 3977"
- Denotes Found Survey Monument w/cap as noted
- ▤▤▤ Denotes Non-Access Easement per this Plat.