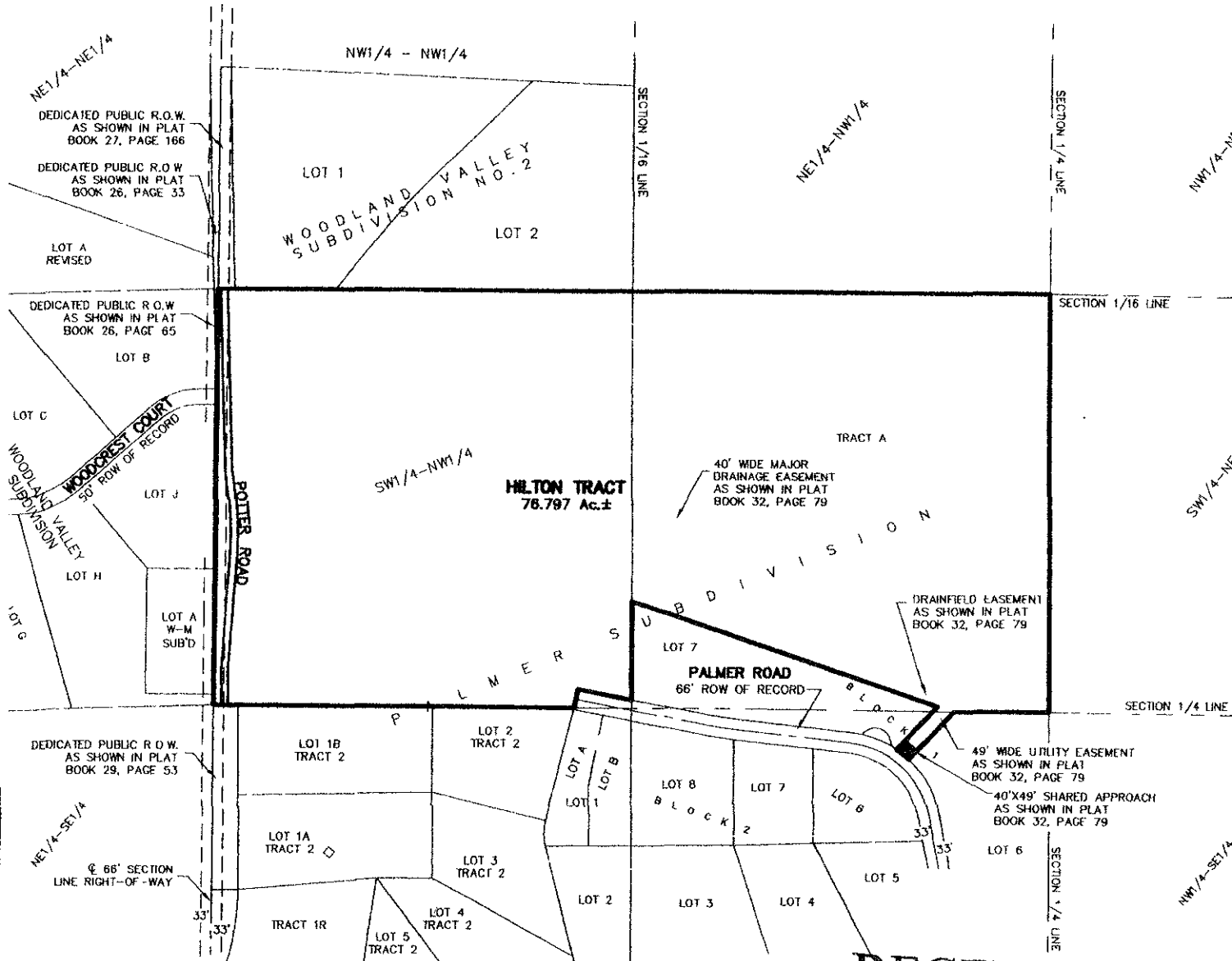


LAYOUT PLAT OF HILTON TRACT, PALMER SUBDIVISION

(formerly Tract A of Palmer Subdivision and the
SW1/4 of the NW1/4 of Section 14, T2N, R6E, BHM)
LOCATED IN THE SW1/4 OF THE NW1/4, THE SE1/4 OF THE NW1/4, &
THE NE1/4 OF THE SW1/4,
SECTION 14, T2N, R6E, BHM
PENNINGTON COUNTY, SOUTH DAKOTA



RECEIVED

MAR 14 2007

Rapid City Growth
Management Department

FEBRUARY 20, 2007

SCALE: 1"=500'

Renner Associates, LLC.

616 Sixth St. * Rapid City, SD 57701 * 605/721-7310

FAX: 605/721-7313 * E-MAIL: Gary@RennerAssoc.com

* Spearfish 605/717-0016 *



CITY HALL 1903