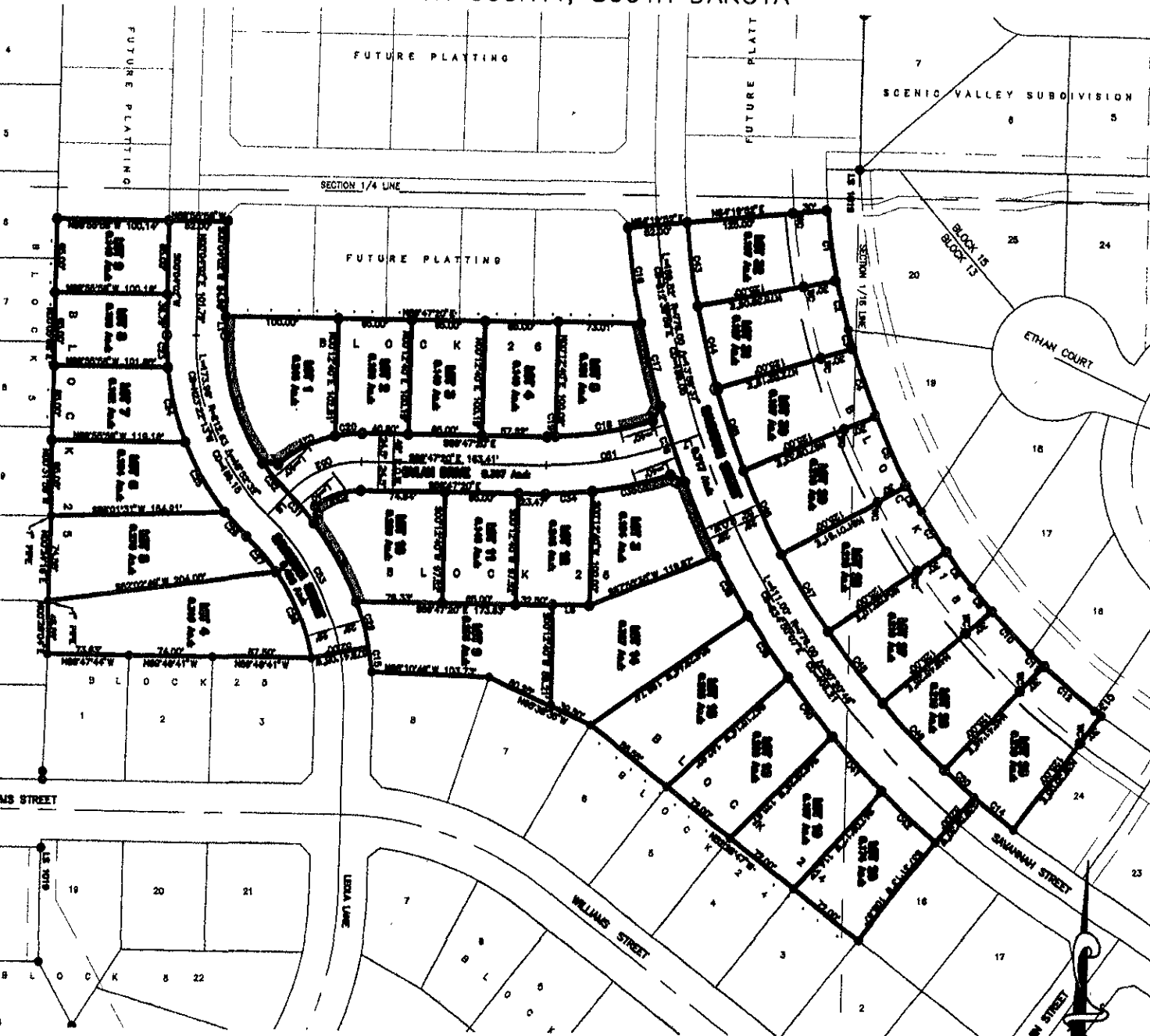


LOTS 25 THRU 32 OF BLOCK 18, LOTS 9 THRU 15 & LOTS 18 THRU 20 OF BLOCK 24, LOTS 4 THRU 9 OF BLOCK 25, AND LOTS 1 THRU 5 OF BLOCK 26, TRAILWOOD VILLAGE

LOCATED IN THE SE¹/₄ OF THE SE¹/₄ SECTION 10, T1N, R8E, BHM, PENNINGTON COUNTY, SOUTH DAKOTA



MARCH 8, 2006
N.T.S.