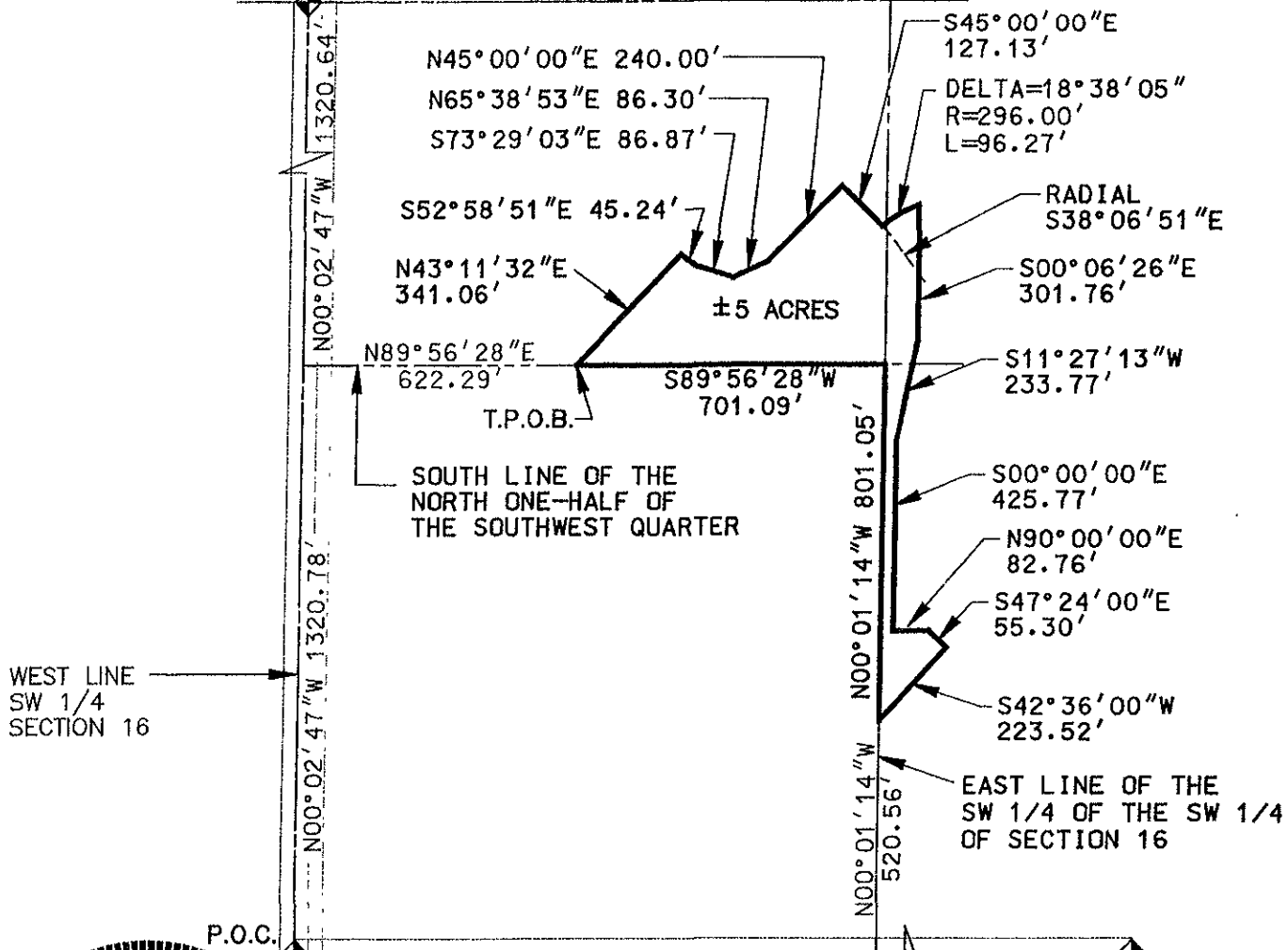


# PLUM CREEK DEVELOPMENT

## PARCEL G (GENERAL COMMERCIAL)

LOCATED IN THE SW 1/4 OF SECTION 16,  
T1N, R8E, B.H.M., PENNINGTON COUNTY, SOUTH DAKOTA

W 1/4 CORNER  
SECTION 16

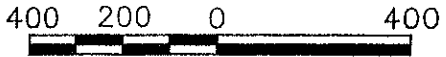
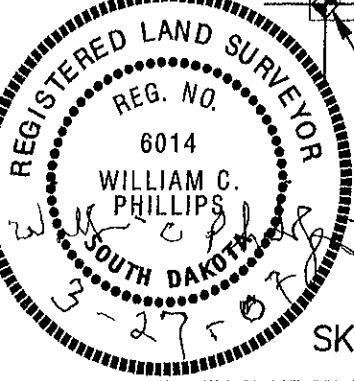


WEST LINE  
SW 1/4  
SECTION 16

P.O.C.

SW CORNER  
SECTION 16  
FOUND BRASS CAP

S 1/4 CORNER  
SECTION 16  
FOUND BRASS CAP



SCALE: 1" = 400'

SKETCH FOR ZONING DESCRIPTION