

PLAT OF LOTS 1 THRU 7 MARLIN INDUSTRIAL PARK

AND DEDICATED PUBLIC RIGHT OF WAY

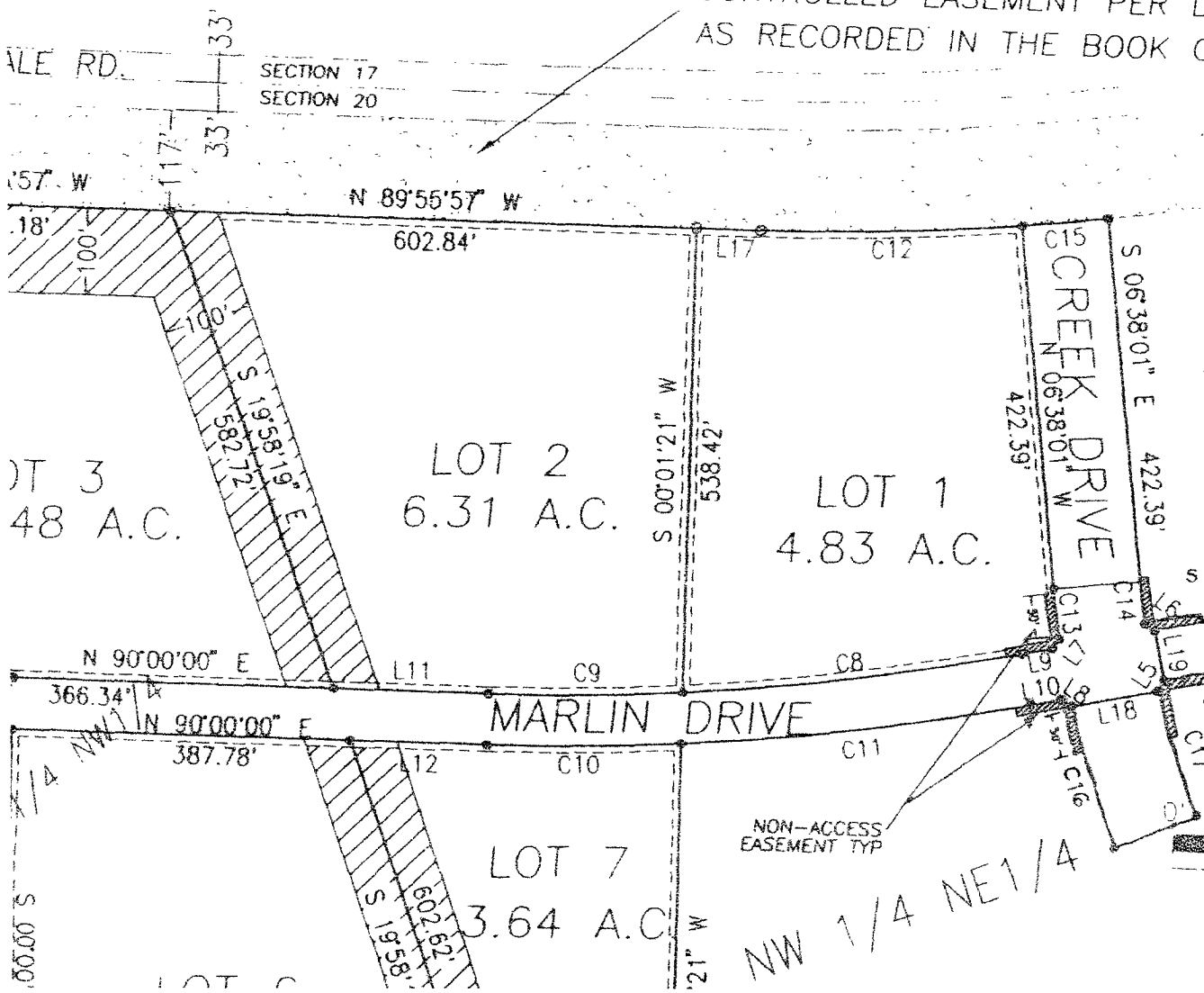
KNOWN AS LOT A OF THE NE1/4NW1/4 AND A PORTION
THE NW1/4NE1/4 OF SECTION 20, T1N, R8E, B.H.M.,
RAPID CITY, PENNINGTON COUNTY, SOUTH DAKOTA

RECORDED

FEB 9 9 2007

Rapid City Growth
Management Department

CONTROLLED EASEMENT PER D.O.T.
AS RECORDED IN THE BOOK OF PLATS HWY 9 PAGE 46



LEGEND

- Denotes set 5/8" rebar with survey cap marked "ARLETH 3977"
- Denotes Found Survey Monument



Scale 1 Inch = 200 Feet
JANUARY 2006