

# EXHIBIT A

07PL055

EASEMENT VACATION EXHIBIT  
 LOTS 8, BLOCK 10, FAIRWAY HILLS P.R.D.  
 RAPID CITY, PENNINGTON COUNTY, SOUTH DAKOTA



1"=40'

NUM	DELTA	ARC	RADIUS	BEARING	DISTANCE
C1	11°27'07"	136.90'	684.93'	N30°27'17"E	136.67'
C2	50°07'13"	26.24'	30.00'	N39°41'58"E	25.41'
C3	75°06'08"	72.09'	55.00'	S27°12'30"W	67.04'

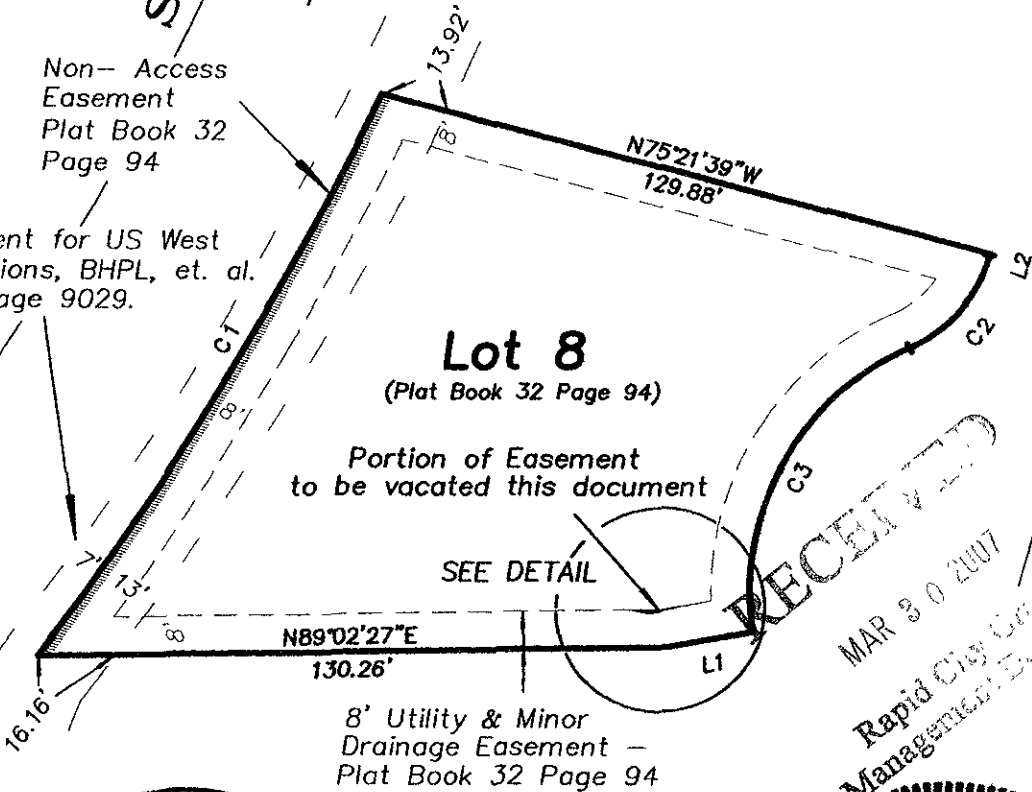
NUM	BEARING	DISTANCE
L1	N79°41'00"E	17.99'
L2	S14°38'21"W	0.41'

Sheridan  
Lake  
Road

Carmel  
Point

Non- Access  
Easement  
Plat Book 32  
Page 94

20' Easement for US West  
Communications, BHPL, et. al.  
Book 52 Page 9029.



**Lot 8**  
(Plat Book 32 Page 94)

Portion of Easement  
to be vacated this document

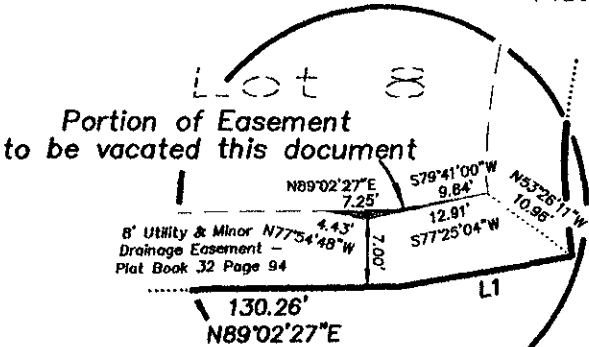
SEE DETAIL

8' Utility & Minor  
Drainage Easement -  
Plat Book 32 Page 94

RECEIVED

MAR 30 2007

Rapid City County  
Management Dept



**Detail**

