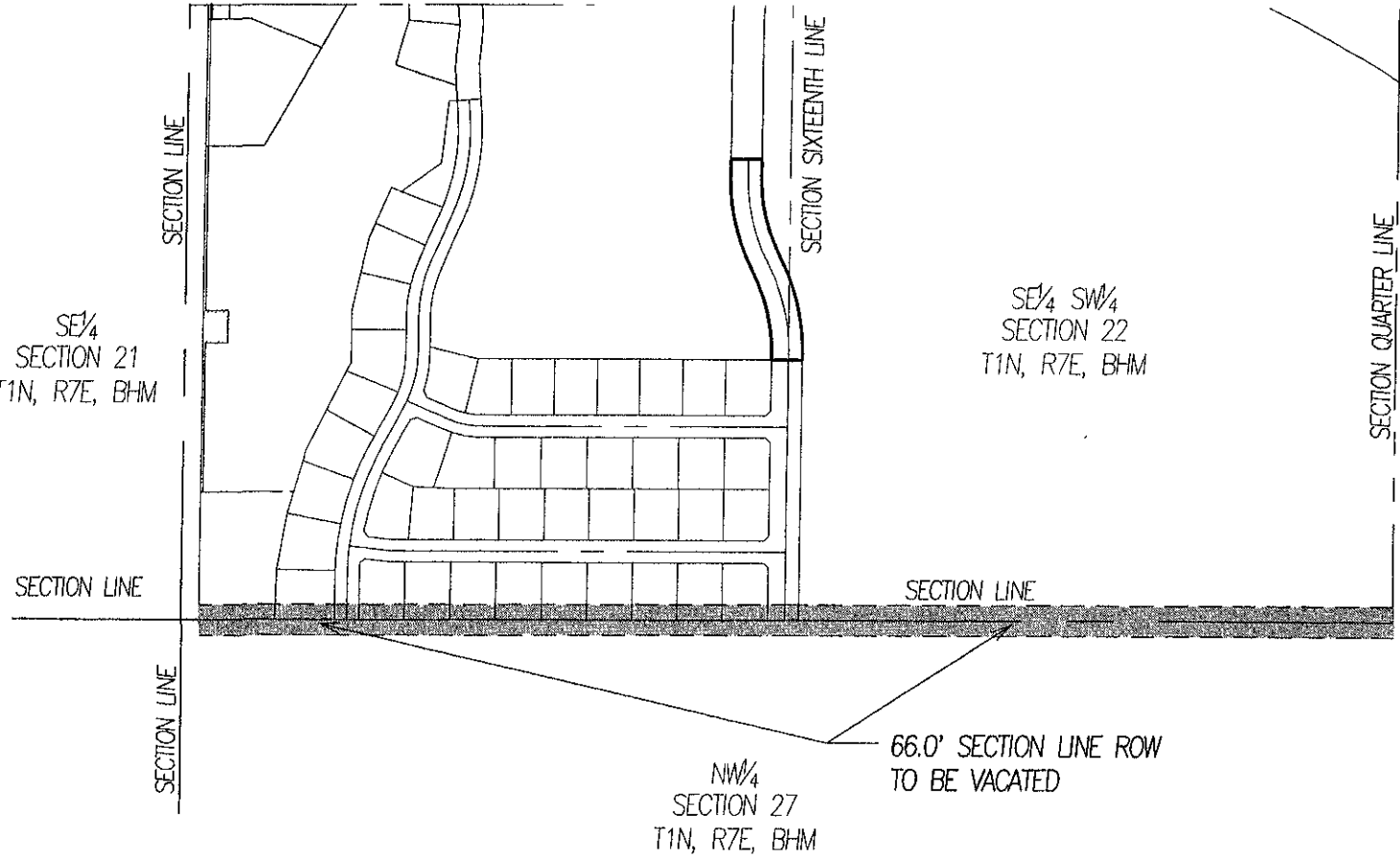


EXHIBIT A

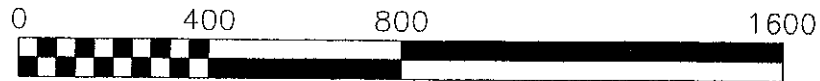
SECTION LINE VACATE
LOCATED IN THE SW¹/₄ SECTION 22 T1N, R7E, BHM
RAPID CITY, PENNINGTON COUNTY, SOUTH DAKOTA



RECEIVED

JAN 12 2007

Rapid City Growth
Management Department



SCALE: 1" = 400'