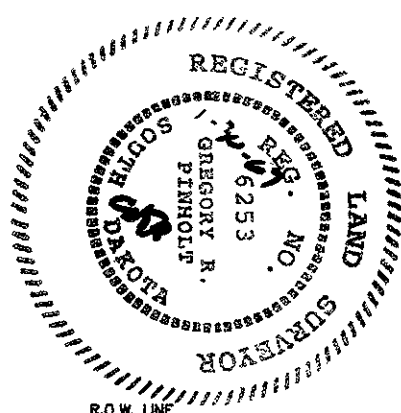


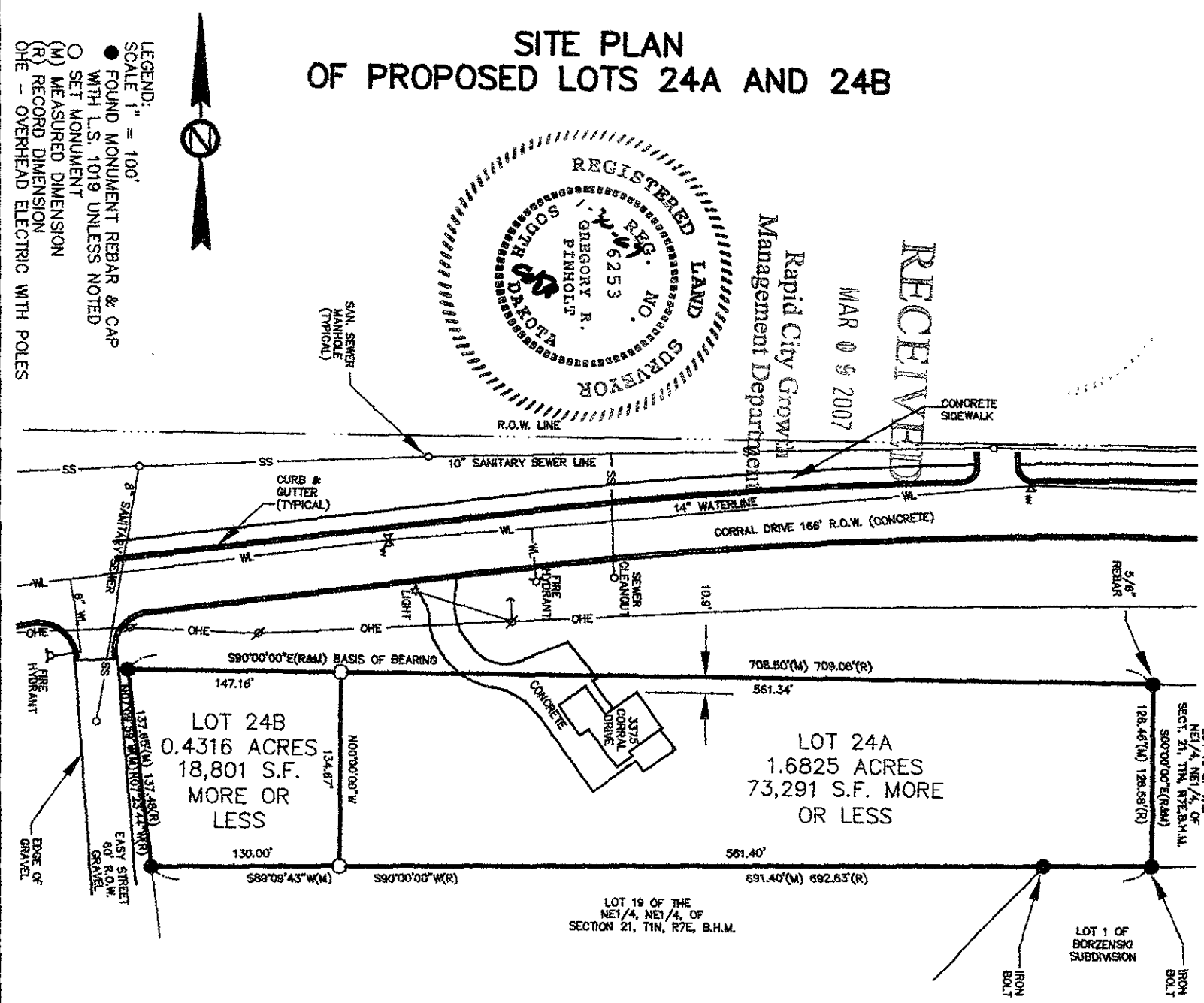
SITE PLAN OF PROPOSED LOTS 24A AND 24B



RECEIVED

MAR 09 2007

Rapid City Growth
Management Department



- LEGEND:
SCALE 1" = 100'
- FOUND MONUMENT REBAR & CAP WITH U.S. 1019 UNLESS NOTED
 - SET MONUMENT
 - (M) MEASURED DIMENSION
 - (R) RECORD DIMENSION
 - OHE - OVERHEAD ELECTRIC WITH POLES



SITE PLAN FOR LOTS 24A AND LOT 24B OF THE NE1/4 OF THE NE1/4 OF SECTION 21, T1N, R7E, B.H.M., FORMERLY LOT 24 OF THE NE1/4 OF THE NE1/4 OF SECTION 21, T1N, R7E, B.H.M., LOCATED IN RAPID CITY, PENNINGTON COUNTY, SOUTH DAKOTA.

PINHOLT ISLAND SURVEYING
P.O. BOX 704
RAPID CITY, S.D. 57708
PH. & FAX 605-394-7703

DRAWN BY: GRP
CLIENT: CANNON
DATE: Jan. 30, 2007
FILE: camnone.dwg

LOT 19 OF THE NE1/4, NE1/4, OF SECTION 21, T1N, R7E, B.H.M.

LOT 1 OF BORZENSKI SUBDIVISION

LOT 18 OF THE NE1/4, NE1/4, OF SECT. 21, T1N, R7E, B.H.M. S80°00'00"E(R&M)

LOT 24B
0.4316 ACRES
18,801 S.F.
MORE OR LESS

LOT 24A
1.6825 ACRES
73,291 S.F. MORE OR LESS