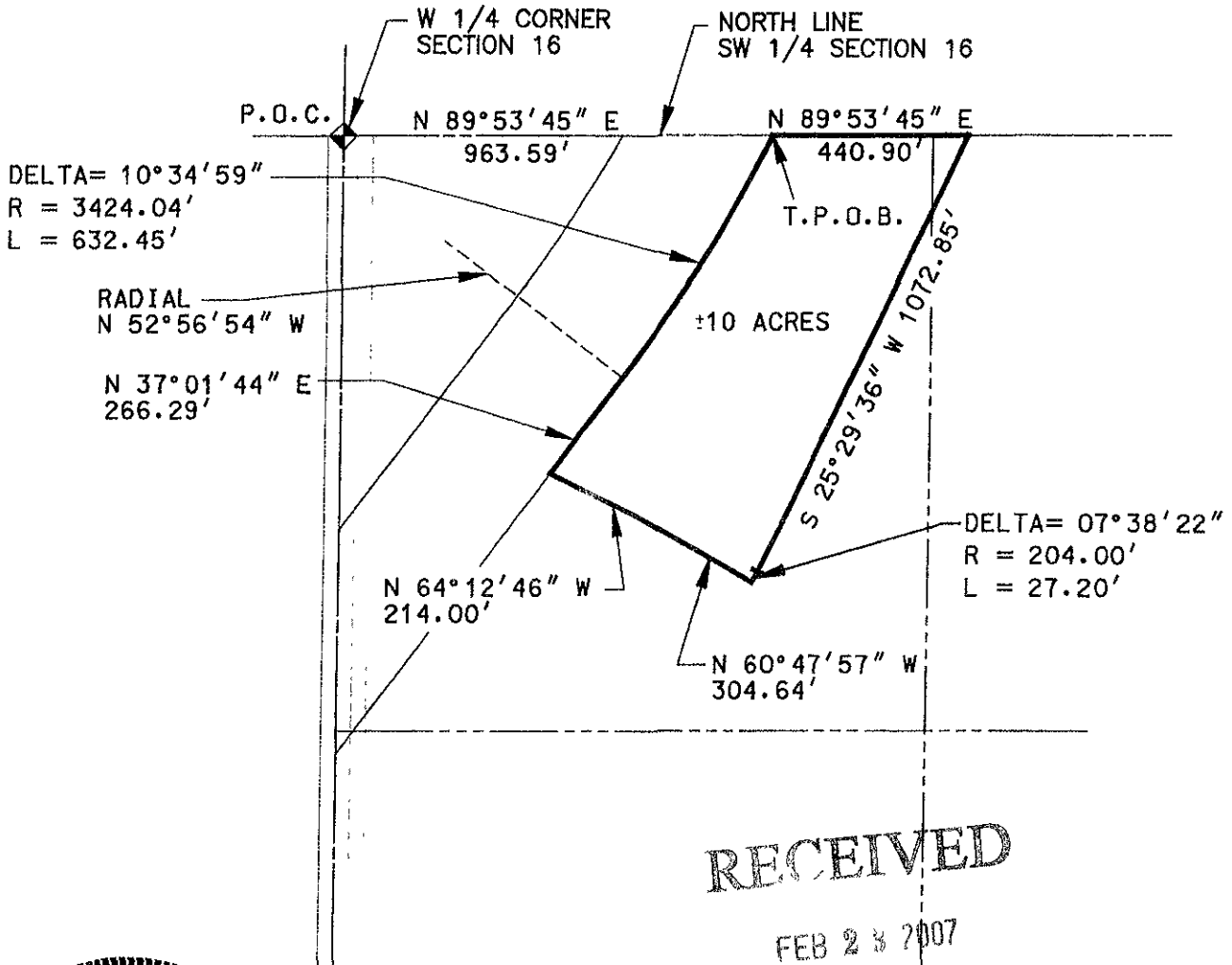


PLUM CREEK DEVELOPMENT

PARCEL E (GENERAL COMMERCIAL)

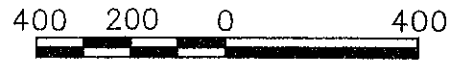
LOCATED IN THE SW 1/4 OF SECTION 16,
T1N, R8E, B.H.M., PENNINGTON COUNTY, SOUTH DAKOTA



RECEIVED

FEB 23 2007

Rapid City Growth
Management Department



SCALE: 1" = 400'

SKETCH FOR ZONING DESCRIPTION

