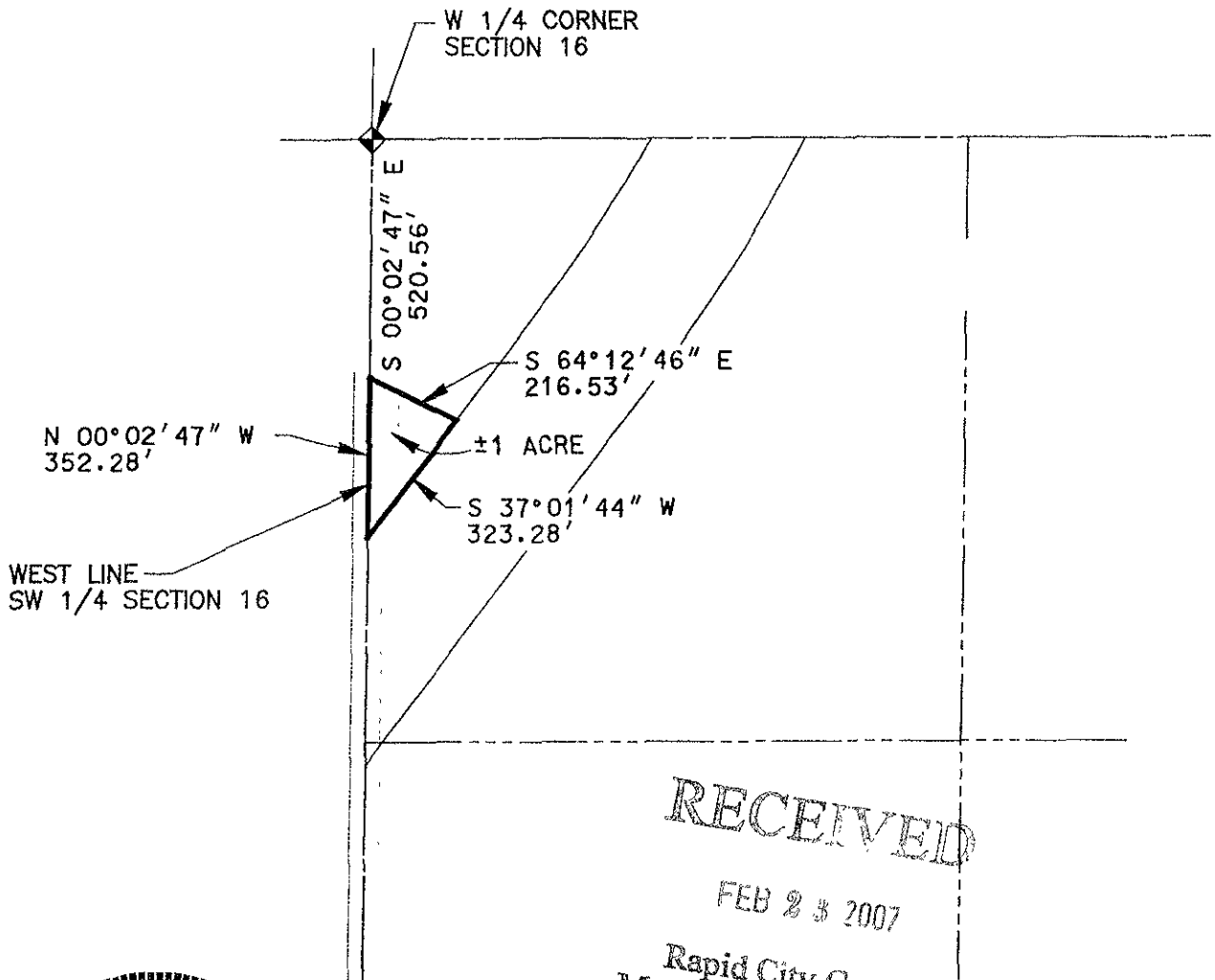


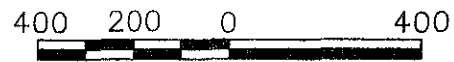
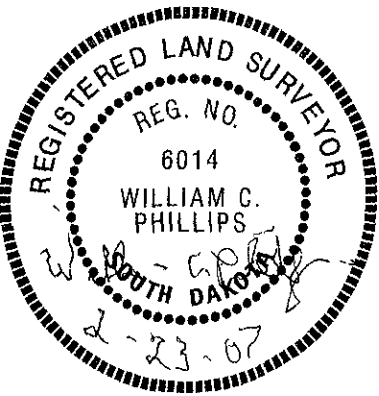
PLUM CREEK DEVELOPMENT

PARCEL F (OFFICE COMMERCIAL)

LOCATED IN THE SW 1/4 OF SECTION 16,
T1N, R8E, B.H.M., PENNINGTON COUNTY, SOUTH DAKOTA



RECEIVED
 FEB 23 2007
 Rapid City Growth
 Management Department



SCALE: 1" = 400'

SKETCH FOR ZONING DESCRIPTION