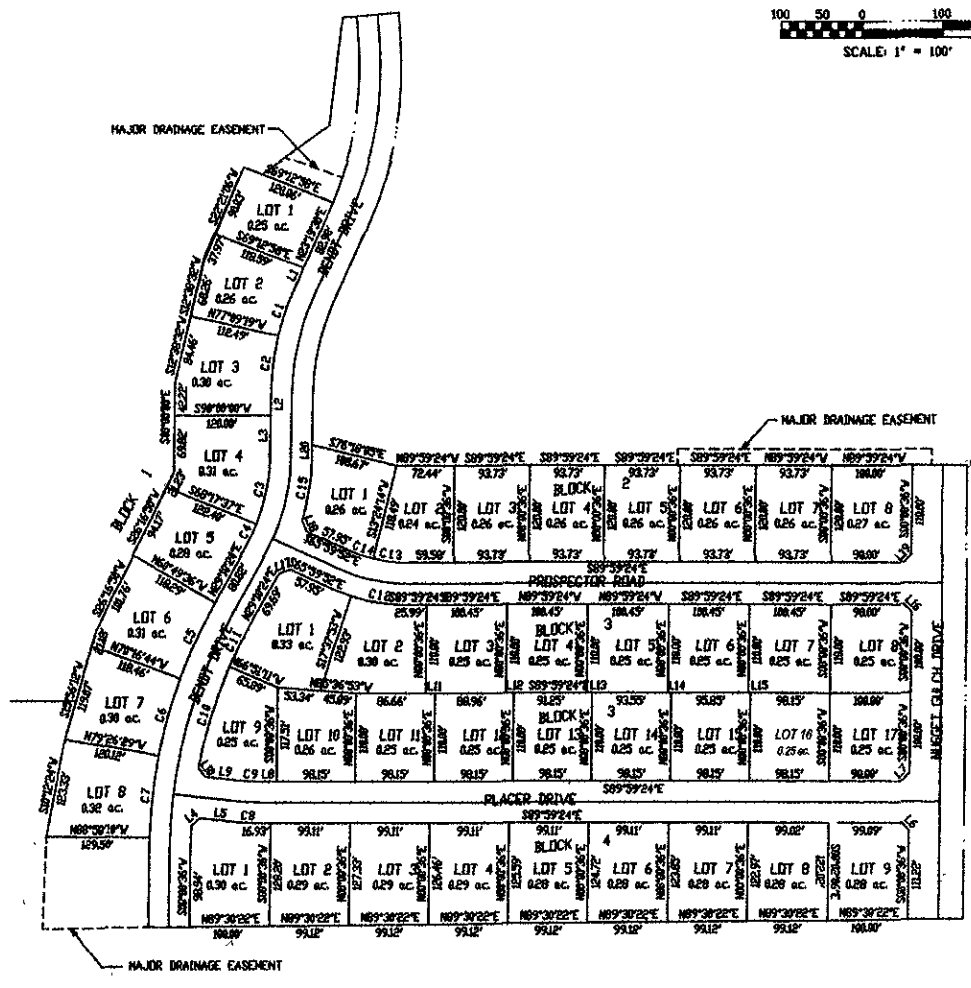
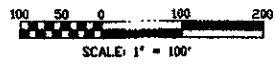


LOTS 1-8 BLOCK 1, LOTS 1-8 BLOCK 2, LOTS 1-17 BLOCK 3, LOTS 1-9 BLOCK 4 LOCATED IN THE SW¼SW¼, W¼SE¼SW¼ of SECTION 22, T11N, R7E, BHM Pennington Co., City of Rapid City, South Dakota



NUMBER	DIRECTION	DISTANCE
L1	N 29°19'30" E	30.54'
L2	N 89°08'00" V	27.16'
L3	S 89°08'00" E	51.28'
L4	S 49°30'24" V	13.76'
L5	S 89°30'36" E	47.28'
L6	N 44°39'24" V	14.34'
L7	S 45°00'36" V	14.34'
L8	S 89°39'24" E	25.49'
L9	N 89°30'36" V	47.28'
L10	N 57°02'48" V	13.76'
L11	S 89°39'24" E	11.67'
L12	N 89°09'24" V	9.19'
L13	S 89°39'24" E	6.89'
L14	S 89°39'24" E	4.60'
L15	N 89°39'24" V	5.30'
L16	N 44°39'24" V	14.14'
L17	N 71°20'18" E	14.77'
L18	N 24°13'18" V	14.98'
L19	S 49°00'36" V	14.14'
L20	S 89°00'00" E	13.87'

NOTES:

- MINOR DRAINAGE AND UTILITY EASEMENTS ARE HEREBY ESTABLISHED BY WIDE ON THE INTERIOR SIDE OF ALL LOT LINES AND RIGHT-OF-WAY, (EXCEPT WHERE MAJOR DRAINAGE EASEMENTS ARE LOCATED)
- TOTAL PLATTED AREA: 15.65 ACRES; LOTS: 11.35 ACRES; DEDICATED PUBLIC RIGHT-OF-WAY: 4.30 ACRES.
- ANY MAJOR DRAINAGE EASEMENTS SHOWN HEREON SHALL BE KEPT FREE OF ALL OBSTRUCTIONS INCLUDING BUT NOT LIMITED TO BUILDINGS, WALLS, FENCES, HEDGES, TREES, AND SHRUBS. THESE EASEMENTS GRANT TO ALL PUBLIC AUTHORITIES THE RIGHT TO CONSTRUCT, OPERATE, MAINTAIN, INSPECT AND REPAIR SUCH IMPROVEMENTS AND STRUCTURES AS IT DEEMS EXPEDIENT TO FACILITATE DRAINAGE FROM ANY SOURCE.
- NON-ACCESS EASEMENTS ARE HEREBY ESTABLISHED ALONG THE FIRST FIFTY FEET OF CORNER LOTS OR AS INDICATED HEREON.

NUMBER	BETA ANGLE	ARC LENGTH	CHORD DIRECTION	TANGENT	RADIUS	CHORD LENGTH
C1	89°29'49"	59.63	S 89°09'36" W	29.90	326.00	331.53
C2	10°30'41"	73.90	S 86°25'20" V	36.79	326.00	282.93
C3	21°42'23"	84.86	S 89°31'12" V	40.95	326.00	341.36
C4	0°39'38"	63.19	S 89°28'24" V	14.62	326.00	63.17
C5	0°22'00"	123.27	S 24°22'58" V	51.75	326.00	123.16
C6	89°07'49"	128.11	S 57°08'24" V	30.16	326.00	128.09
C7	0°22'41"	128.44	S 85°31'41" W	51.44	326.00	128.53
C8	86°38'28"	25.17	S 86°47'59" E	12.68	226.00	25.03
C9	86°28'28"	15.38	N 86°47'59" V	3.70	174.00	15.37
C10	13°09'44"	131.86	N 81°33'57" E	64.22	374.00	131.57
C11	86°41'29"	64.37	S 86°49'57" V	30.21	374.00	64.34
C12	17°37'17"	69.51	S 81°14'45" E	35.83	326.00	69.23
C13	13°22'38"	46.68	S 83°17'29" E	24.43	174.00	46.58
C14	86°29'23"	32.19	N 71°19'49" V	16.14	174.00	32.14
C15	86°28'15"	73.58	N 86°15'28" E	40.87	376.00	73.31