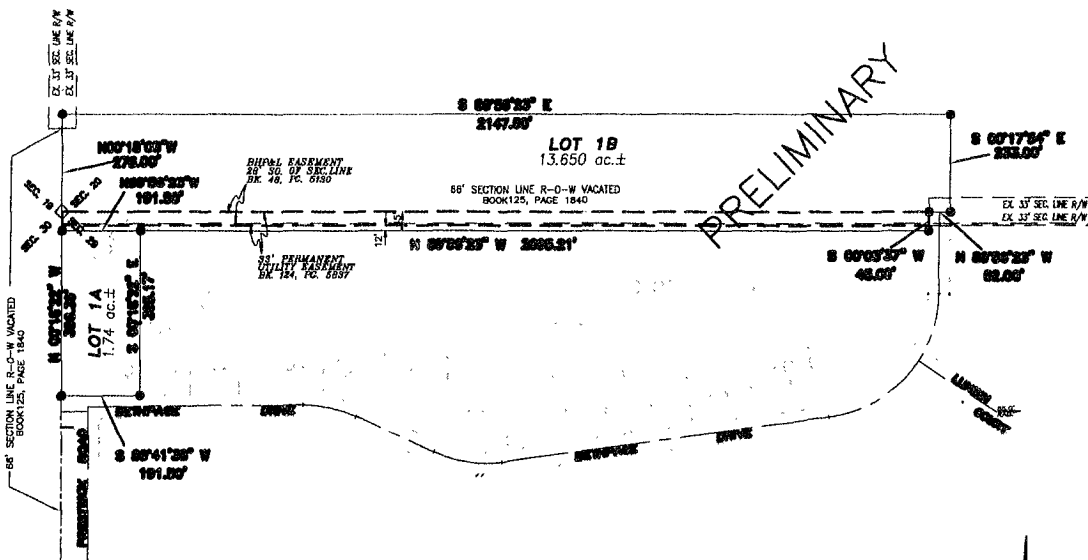


PLAT OF LOTS 1A AND 1B, BLOCK 16 OF RED ROCK ESTATES
 FORMERLY A TRACT OF LAND LOCATED IN THE SW1/4, BEING 2147.5' X 233', IN T1N, R7E, SECTION 20
 AND LOT 1, BLOCK 16, RED ROCK ESTATES, LOCATED IN THE NW1/4 SECTION 29, T1N, R7E, B.H.M.,
 RAPID CITY, PENNINGTON COUNTY, SOUTH DAKOTA



NOTES

1. LOT 1, BLOCK 16 OF RED ROCK ESTATES IS RECORDED IN PLAT BOOK 32 ON PAGE 13.
2. TOTAL PLATTED AREA=15.39 ACRES
3. ANY MAJOR DRAINAGE EASEMENTS SHOWN HEREON SHALL BE KEPT FREE OF ALL OBSTRUCTIONS INCLUDING, BUT NOT LIMITED TO, BUILDINGS, WALLS, FENCES, HEDGES, TREES AND SHRUBS. THESE EASEMENTS GRANT TO ALL PUBLIC AUTHORITIES THE RIGHT TO CONSTRUCT, OPERATE, MAINTAIN, INSPECT AND REPAIR SUCH IMPROVEMENTS AND STRUCTURES AS IT DEEMS EXPEDIENT TO FACILITATE DRAINAGE FROM ANY SOURCE.
4. ALL BUILDERS SHALL MAINTAIN EXISTING DRAINAGE FACILITIES IN ACCORDANCE TO APPROVED CONSTRUCTION PLANS.
5. ACREAGE SHOWN ON LOTS INCLUDES ANY EASEMENTS.

LEGEND

- SET 5/8" REBAR WITH CAP STAMPED "ARLETH 3677."
- ◇ FOUND SECTION CORNER



SCALE: 1"=200'