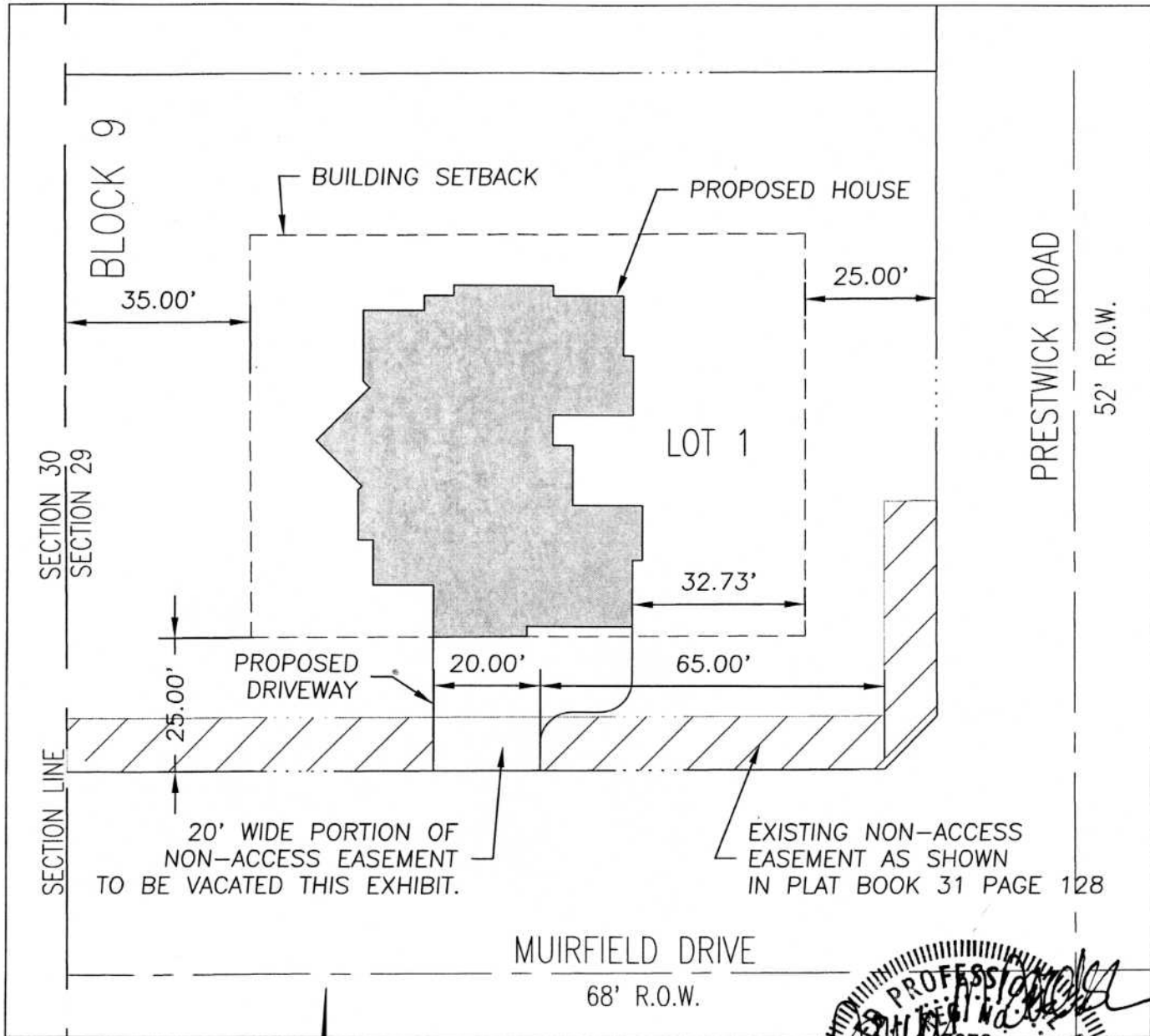


EXHIBIT A

20' WIDE PORTION OF NON-ACCESS EASEMENT TO BE VACATED LOCATED IN LOT 1 OF BLOCK 9, RED ROCK ESTATES

LOCATED IN THE SW $\frac{1}{4}$ NW $\frac{1}{4}$ OF SECTION 29, T1N, R7E, BHM
RAPID CITY, PENNINGTON COUNTY, SOUTH DAKOTA

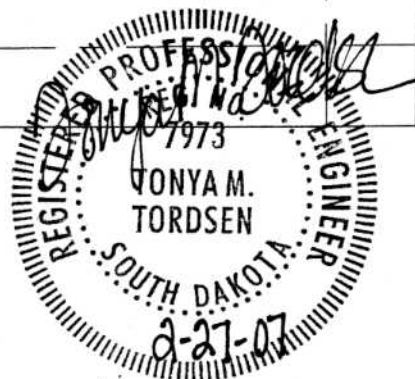


MUIRFIELD DRIVE
68' R.O.W.

RECEIVED

FEB 27 2007

Rapid City Growth
Management Department



NON-ACCESS EASEMENT VACATION

JOB NO: 07-0453	REV 1:
DATE: 1-22-07	REV 2:
DRAWN BY: JS	REV 3:



D.D.I.
DREAM DESIGN INTERNATIONAL, INC.
 PROFESSIONAL STRUCTURAL & CIVIL ENGINEERING CONSULTANTS
 528 KANSAS CITY ST., SUITE 4, RAPID CITY, SD 57701
 PH. 605-348-0538 FAX. 605-348-0545 EMAIL: engineers@dreamdesigninc.com