

PRELIMINARY PLAT OF
LOT 4R OF BLOCK 5 OF THE REPLAT OF HARNEY PEAK VIEW ADDITION,
(FORMERLY LOT 4 OF BLOCK 5 AND LOT B OF LOT 6 OF BLOCK 2 OF THE
REPLAT OF HARNEY PEAK VIEW ADDITION)
LOCATED IN THE E1/2 NE1/4 OF SECTION 9,
TOWNSHIP 1 NORTH, RANGE 8 EAST OF THE BLACK HILLS MERIDIAN,
PENNINGTON COUNTY, SOUTH DAKOTA.
 FEBRUARY, 2007

NOTES

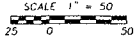
- UTILITY AND MINOR DRAINAGE EASEMENTS RESERVED 8 FEET WIDE ON THE INTERIOR SIDE OF ALL LOT LINES EXCEPTING UNDERGROUND UTILITIES OR POLES WITHIN A 2.5 FOOT RADIUS AROUND EACH PROPERTY CORNER OR WITNESS CORNER MONUMENT
- RECORDING OF THIS PLAT VACATES LOT B OF LOT 6 OF BLOCK 2 OF THE REPLAT OF HARNEY PEAK VIEW ADDITION AS SHOWN ON PLAT RECORDED IN PLAT BOOK 10, PAGE 211 IN THE OFFICE OF THE PENNINGTON COUNTY REGISTER OF DEEDS
- PRELIMINARY PLAT CONTOURS INTERPOLATED FROM PENNINGTON COUNTY / RAPID CITY GIS

CURVE TABLE

C1	Δ=50°53'00"
	R=25.00'
	L=22.20'
C2	Δ=50°53'00"
	R=25.00'
	L=22.20'
C3	Δ=36°24'27"
	R=51.23'
	L=32.56'

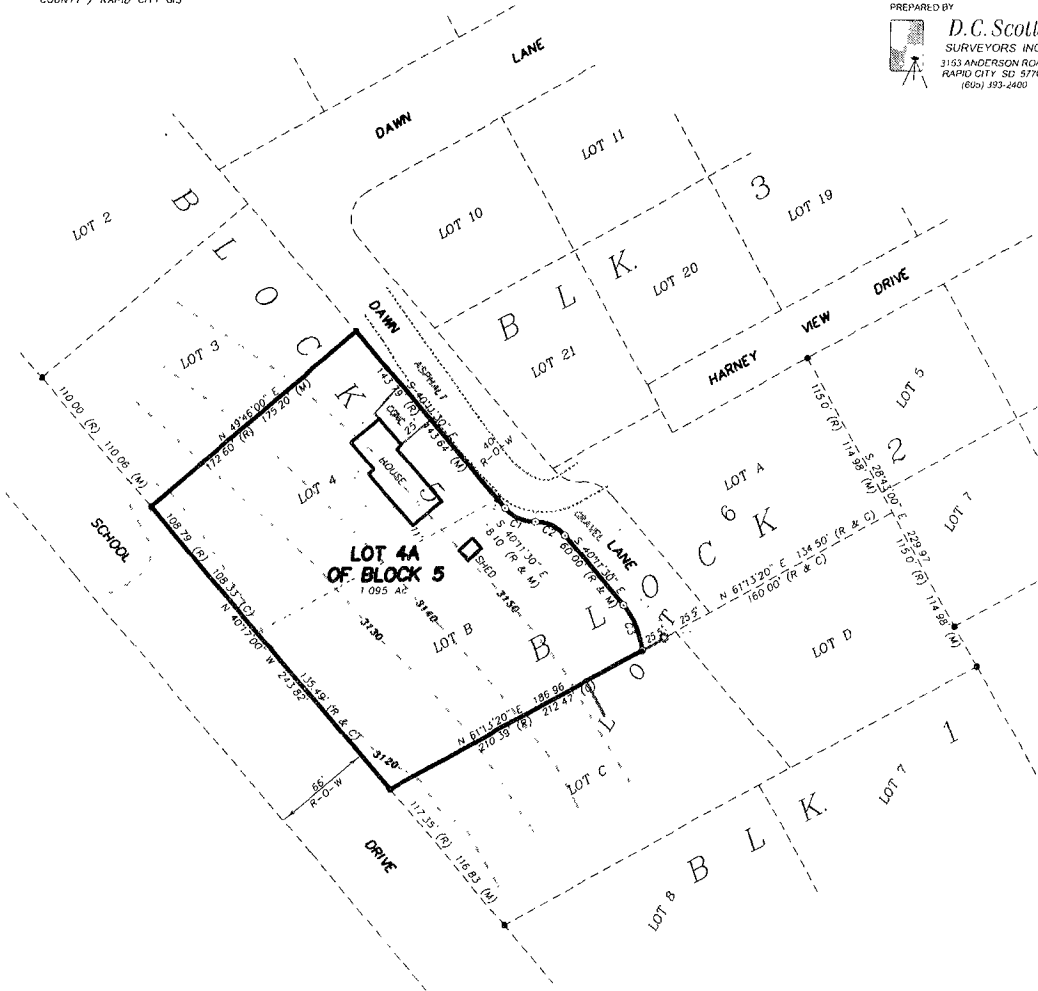
LEGEND

- ⊙ SET 5/8" IRON ROD WITH CAP MARKED "DEAN SCOTT, L.S. 4897"
- FOUND PROPERTY BOUNDARY MONUMENT AS DESCRIBED
- I R IRON ROD
- (R) RECORDED DIMENSION
- (M) MEASURED DIMENSION
- (C) COMPUTED DIMENSION



PREPARED BY

D.C. Scott
 SURVEYORS INC
 3153 ANDERSON ROAD
 RAPID CITY SD 57703
 (605) 993-2400



PRELIMINARY
 5/16/07 10:45:15 AM