

07PL026

PLAT OF RED ROCK ESTATES
LOT 6A & LOT 6B, BLOCK 19

FORMERLY LOT 6, BLOCK 19, OF RED ROCK ESTATES, LOCATED IN THE NE 1/4 AND THE SE 1/4
OF SECTION 29, T1N, R7E, B. H. M., RAPID CITY, PENNINGTON COUNTY, SOUTH DAKOTA.

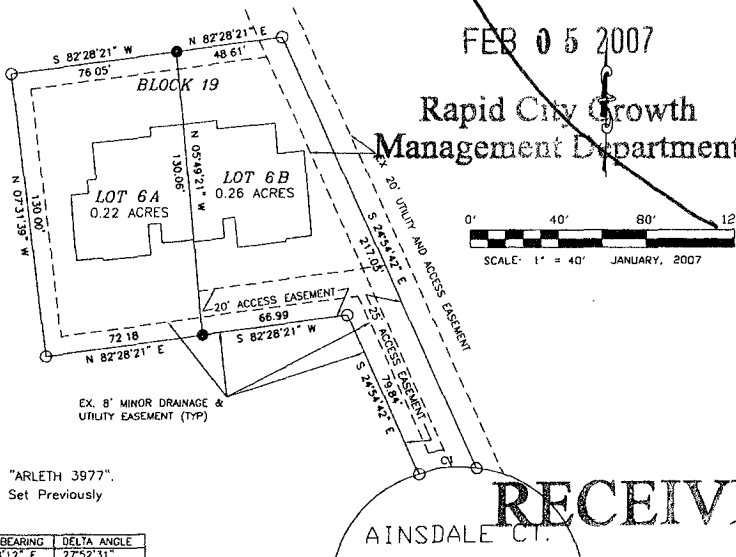
NOTES:

- MINOR DRAINAGE AND UTILITY EASEMENTS ARE HEREBY ESTABLISHED BY ALONG THE INTERIOR SIDES OF ALL LOT LINES (EXCEPT WHERE MAJOR DRAINAGE EASEMENTS ARE LOCATED), AND EXCEPT THE LOT LINE COMMON TO LOTS 6A AND 6B THIS LOT LINE SHALL HAVE A 6' EXTERIOR MAINTENANCE EASEMENT ON EACH SIDE OF THE COMMON LOT LINE TO PROVIDE ROOM FOR MAINTENANCE, REPAIR, AND ALTERATIONS
- TOTAL PLATTED AREA .48 ACRES
- ANY MAJOR DRAINAGE EASEMENT SHOWN HEREON SHALL BE KEPT FREE OF ALL OBSTRUCTIONS INCLUDING BUT NOT LIMITED TO BUILDINGS, WALLS, FENCES, HEDGES, TREES, AND SHRUBS. THESE EASEMENTS GRANT TO ALL PUBLIC AUTHORITIES THE RIGHT TO CONSTRUCT, OPERATE, MAINTAIN, INSPECT AND REPAIR SUCH IMPROVEMENTS AND STRUCTURES AS IT BEEMS EXPEDIENT TO FACILITATE DRAINAGE FROM ANY SOURCE.
- ALL BUILDERS SHALL MAINTAIN EXISTING DRAINAGE FACILITIES IN ACCORDANCE TO APPROVED CONSTRUCTION PLANS. (RAPID CITY ENG. DIV. REQUESTED NOTE)
- ACREAGE SHOWN ON LOTS INCLUDE EASEMENTS
- LOT 6 PREVIOUSLY PLATTED IN B.B. 33, PG. 151.

LEGEND:

- Denotes set 5/8" rebar with survey cap marked "ARLETH 3977".
- Denotes Found Survey Monument "ARLETH 3977" Set Previously

CURVE	RADIUS	ARC LENGTH	CHORD LENGTH	CHORD BEARING	DELTA ANGLE
CT	55.00'	26.76'	26.50'	N 84°28'12" E	27°52'31"



CERTIFICATE OF SURVEYOR
STATE OF SOUTH DAKOTA
COUNTY OF PENNINGTON

I, JOHN M. ARLETH, REGISTERED LAND SURVEYOR NO 3977 IN THE STATE OF SOUTH DAKOTA, DO HEREBY CERTIFY THAT AT THE REQUEST OF THE OWNER(S) LISTED HEREON I HAVE SURVEYED THAT TRACT OF LAND SHOWN, AND TO THE BEST OF MY KNOWLEDGE AND BELIEF, THE WITHIN PLAT IS A REPRESENTATION OF SAID SURVEY. EASEMENTS OR RESTRICTIONS OF MISCELLANEOUS RECORD OR PRIVATE

CERTIFICATE OF FINANCE OFFICER

I, FINANCE OFFICER OF THE CITY OF RAPID CITY, DO HEREBY CERTIFY THAT THAT ALL SPECIAL ASSESSMENTS WHICH ARE LIENS UPON THE WITHIN DESCRIBED LANDS ARE FULLY PAID ACCORDING TO THE RECORDS OF MY OFFICE.

DATED THIS _____ DAY OF _____, 20__

FINANCE OFFICER OF THE CITY OF RAPID CITY

Rapid City Growth
Management Department