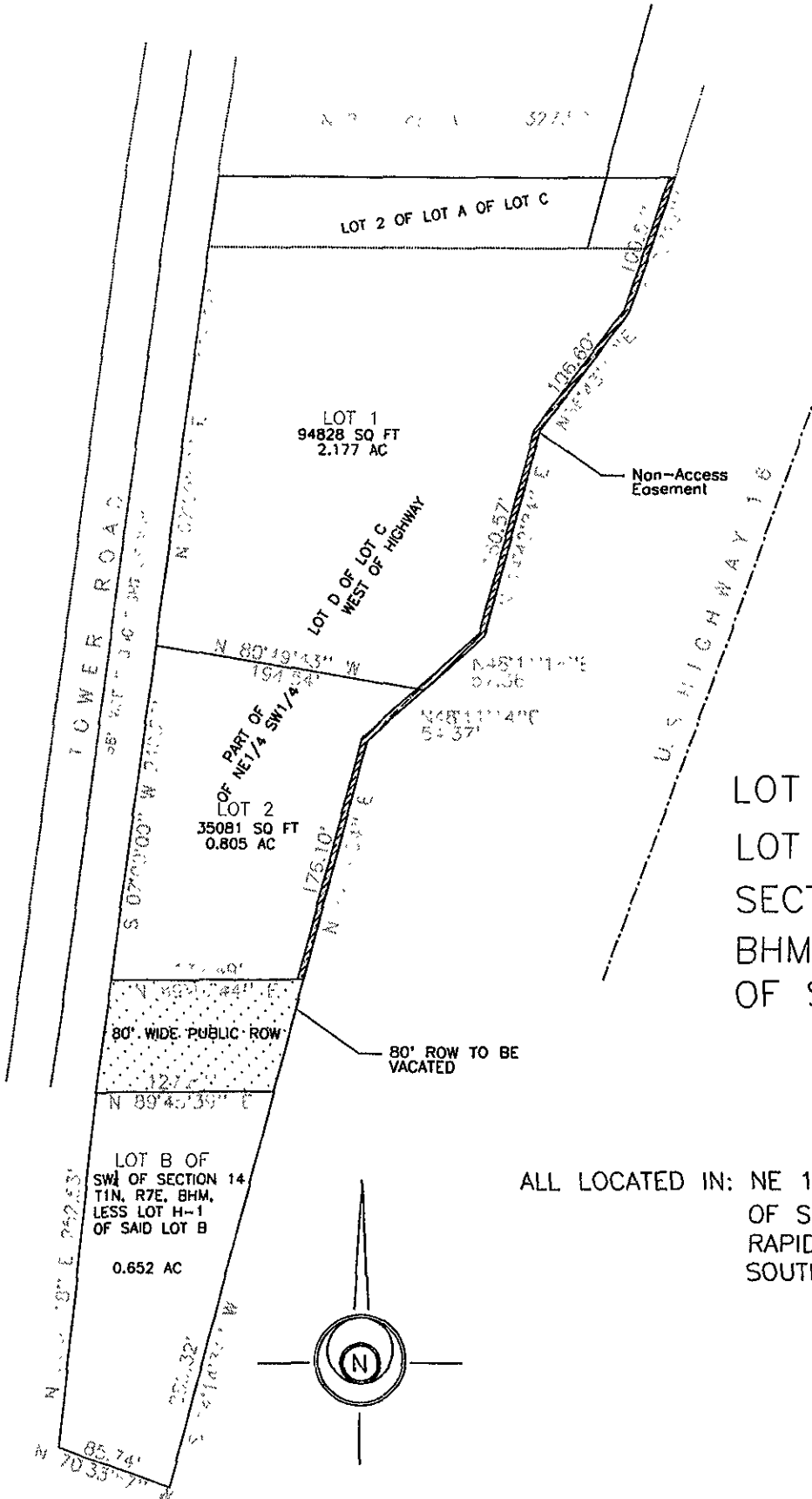
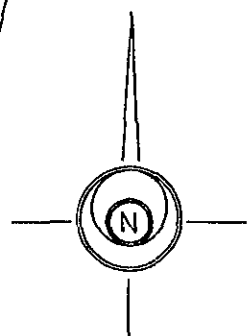


EXHIBIT A



LOT 2 O'MEARA ADDITION &
 LOT B OF SW1/4
 SECTION 14 T1N, R7E,
 BHM, LESS LOT H-1
 OF SAID LOT B

ALL LOCATED IN: NE 1/4 SW1/4
 OF SECTION 14, T1N, R7E, BHM
 RAPID CITY, PENNINGTON COUNTY
 SOUTH DAKOTA



AUGUST 25, 2006
 SCALE: 1" = 120'