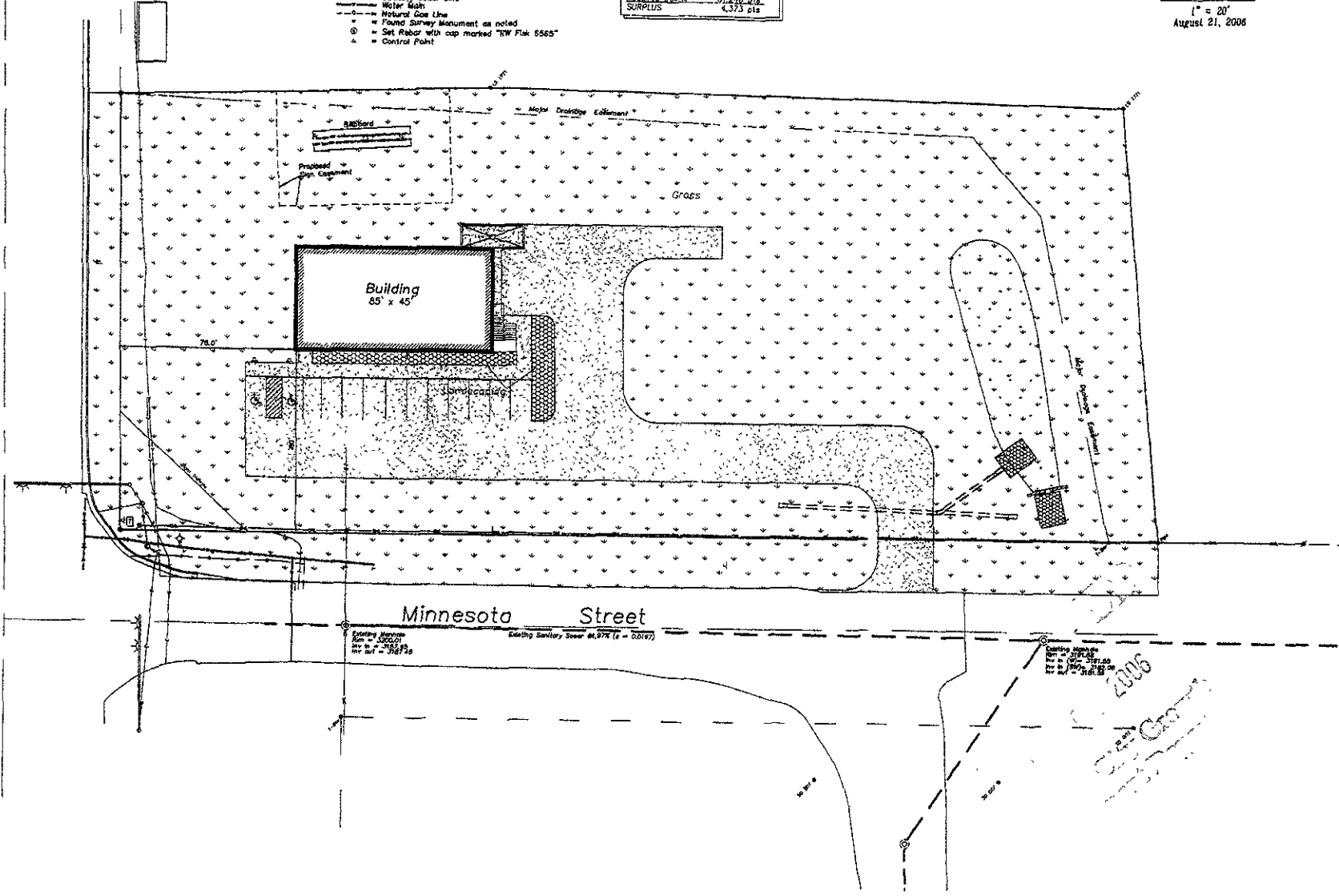
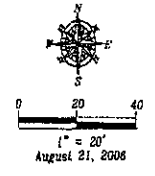


US Highway 79

- LEGEND**
- Sanitary Sewer Manhole (unless noted)
 - Sanitary Sewer Service Line Cleanout
 - Fire Hydrant
 - Water Valve
 - Curb Stop
 - Utility Pole
 - Electric Vault
 - Traffic Light
 - Telecommunications Vault
 - Sign
 - Underground Electric
 - Overhead Utility Line
 - Underground Telecommunications Line
 - Fiber Optic Line
 - Sanitary Sewer Line
 - Water Main
 - Natural Gas Line
 - Found Survey Monument as noted
 - Set Rebar with cap marked "RW Fisk 6565"
 - Control Point

Landscape Points	
Lot	85,073 Sq Ft
Building	3,028 Sq Ft
Required points	81,248 pts
8,562 Sq./yd. Grass = 85,621 pts	
TOTAL	85,871 pts
Required points	81,248 pts
SURPLUS	4,373 pts



Landscape Plan
 Piedmont Processing
 Lot A of Tract 2 of Kormylo Subdivision
 SW1/4 NWT/4 Sec. 17, T1N, R0E, B.H.M.
 Rapid City, Pennington County, South Dakota

1022 Main Street
 P.O. Box 4724
 Rapid City, South Dakota
 57709
 (605) 248-1000
 (605) 241-1111 fax

**Fisk Land Surveying
 & Consulting
 Engineers, Inc.**

Surveyed by: BLML
 Date: 8/13/08
 Drawn by: RW
 Date: 8/21/08
 Checked by: WF
 Revisions:

Project No.
 08-08-06

Sheet
 5
 of
 5