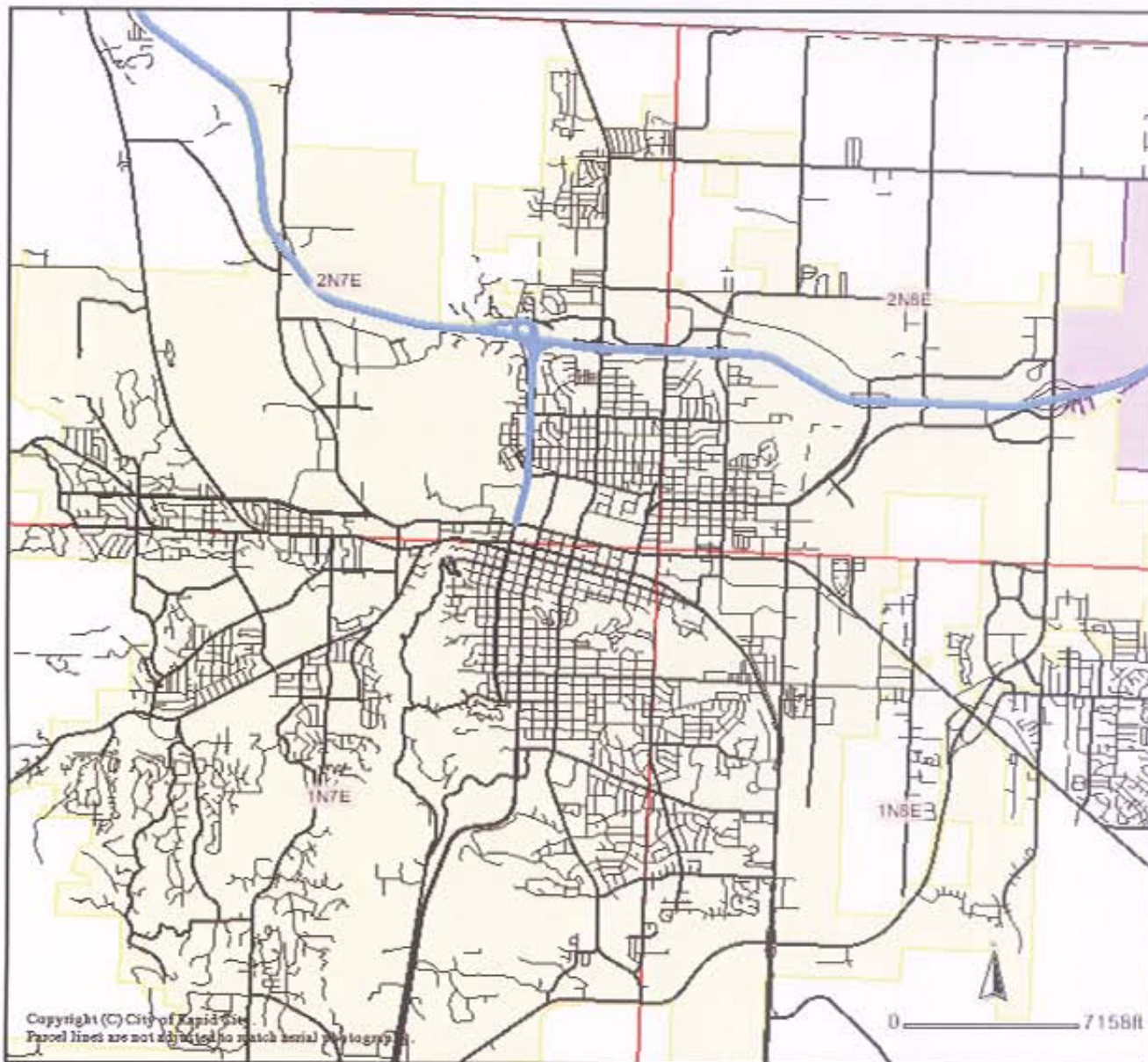


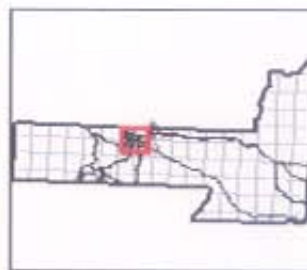
Rapid City Corporate Limits

Print Close



Legend

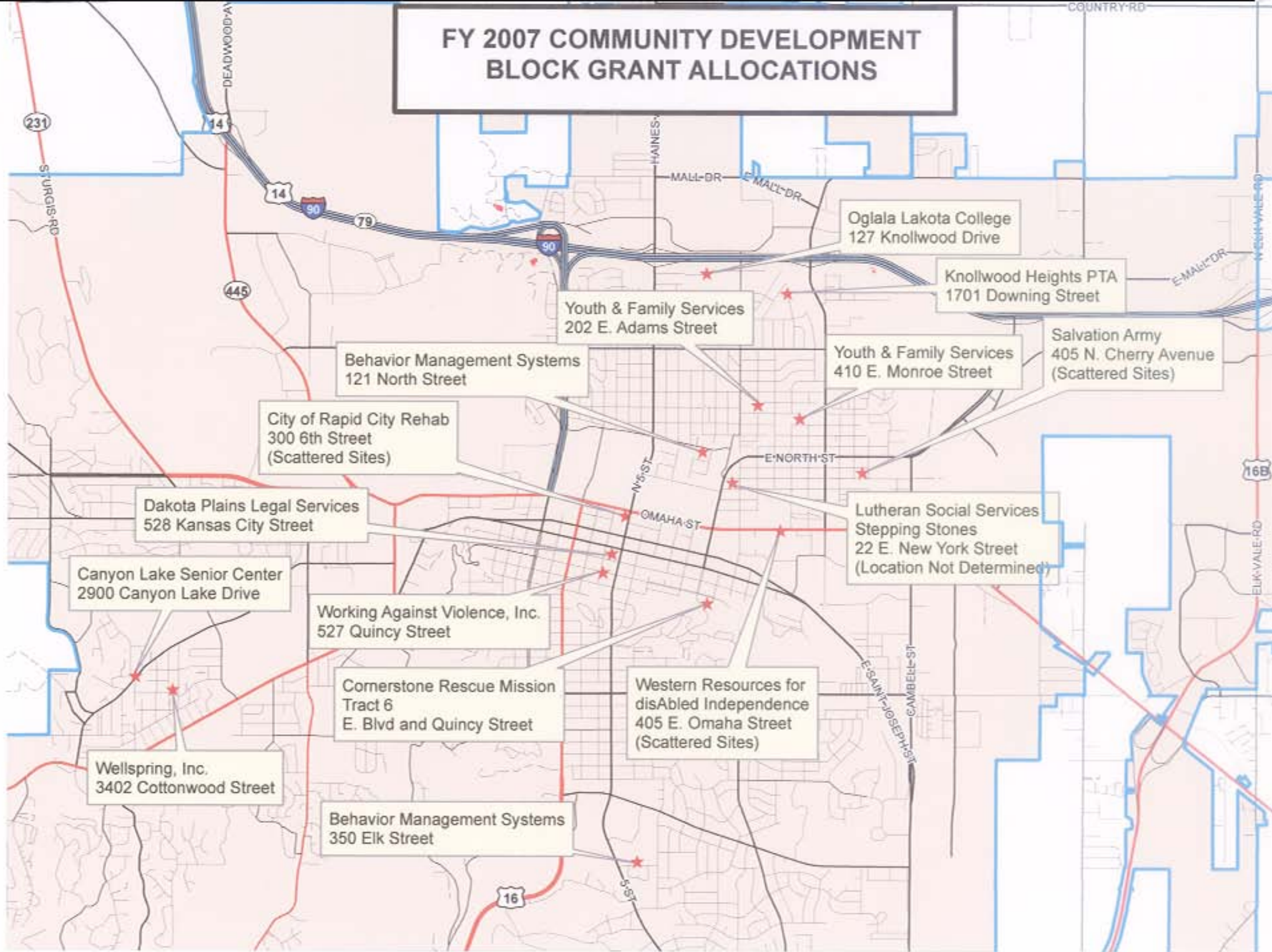
- Roads
 - Not classified
 - Interstate
 - US Highway
 - SD Highway
 - County Highway
 - Main Road
 - Minor Arterial
 - Collector
 - Ramp
 - Paved Road
 - Unpaved Road
 - Unimproved Road
 - Trail
 - other
 - Not yet coded
- County Line
- Townships
- City Boundaries
 - Rapid City
 - Box Elder
 - New Underwood
 - Wasta
 - Wall
 - Quinn
 - Hill City
 - Keystone



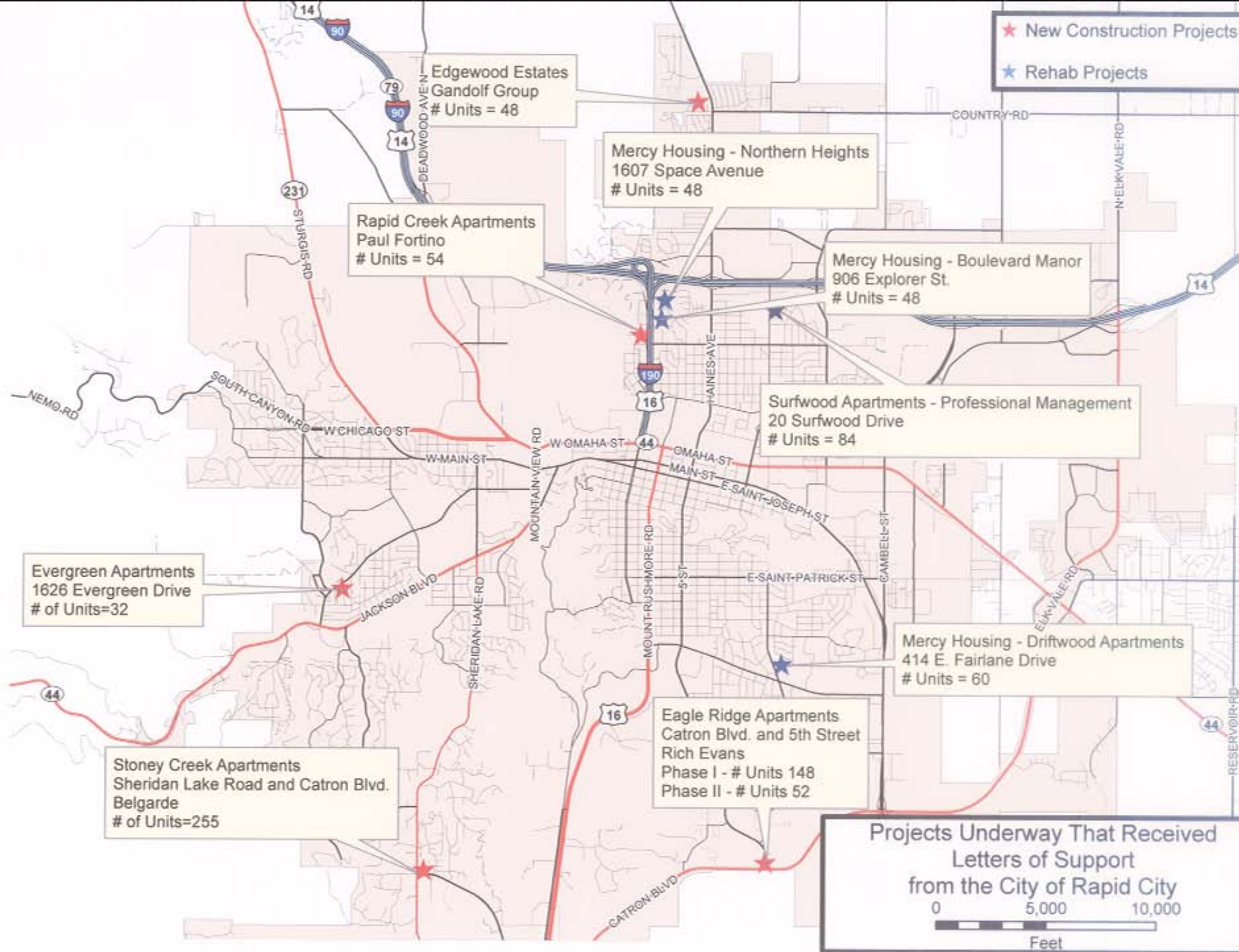
DISCLAIMER
 This GIS data is provided "as is" without warranty or any representation of accuracy, timeliness or completeness. The burden for determining accuracy, completeness, timeliness, merchantability and fitness for or the appropriateness for use rests solely on the requester. Rapid City and Pennington County make no warranty, express or implied, as to the use of the data. The implied warranties of merchantability or fitness for a particular purpose are specifically disclaimed. The requester acknowledges and accepts the limitations of the data, including the fact that the data is dynamic and is in a constant state of maintenance, correction and update. This document does not represent a legal survey of the land. There are no restrictions on distribution of printed Rapid City/Pennington County maps, other than the City of Rapid City copyright/credit notice be legible on the print. The User agrees to recognize and honor in perpetuity the copyrights, and other proprietary claims for the GIS Product File(s) established or produced by the City of Rapid City or the vendors furnishing said files to the City of Rapid City.

Copyright (C) City of Rapid City
 Parcel lines are not adjusted to match aerial photography.

FY 2007 COMMUNITY DEVELOPMENT BLOCK GRANT ALLOCATIONS



- ★ New Construction Projects
- ★ Rehab Projects



Edgewood Estates
Gandolf Group
Units = 48

Mercy Housing - Northern Heights
1607 Space Avenue
Units = 48

Rapid Creek Apartments
Paul Fortino
Units = 54

Mercy Housing - Boulevard Manor
906 Explorer St.
Units = 48

Surfwood Apartments - Professional Management
20 Surfwood Drive
Units = 84

Evergreen Apartments
1626 Evergreen Drive
of Units=32

Mercy Housing - Driftwood Apartments
414 E. Fairlane Drive
Units = 60

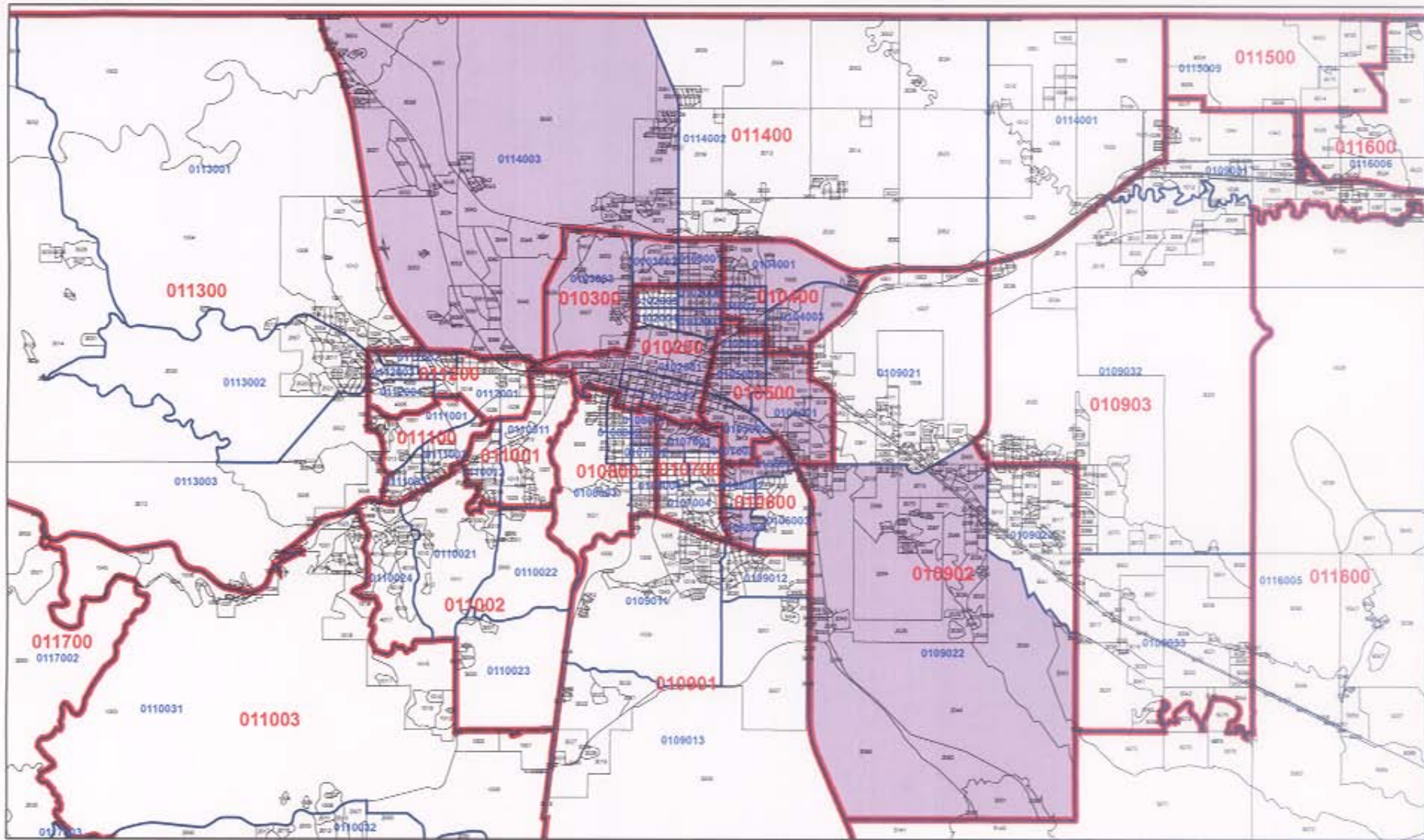
Stoney Creek Apartments
Sheridan Lake Road and Catron Blvd.
Belgarde
of Units=255

Eagle Ridge Apartments
Catron Blvd. and 5th Street
Rich Evans
Phase I - # Units 148
Phase II - # Units 52

Projects Underway That Received
Letters of Support
from the City of Rapid City

0 5,000 10,000
Feet

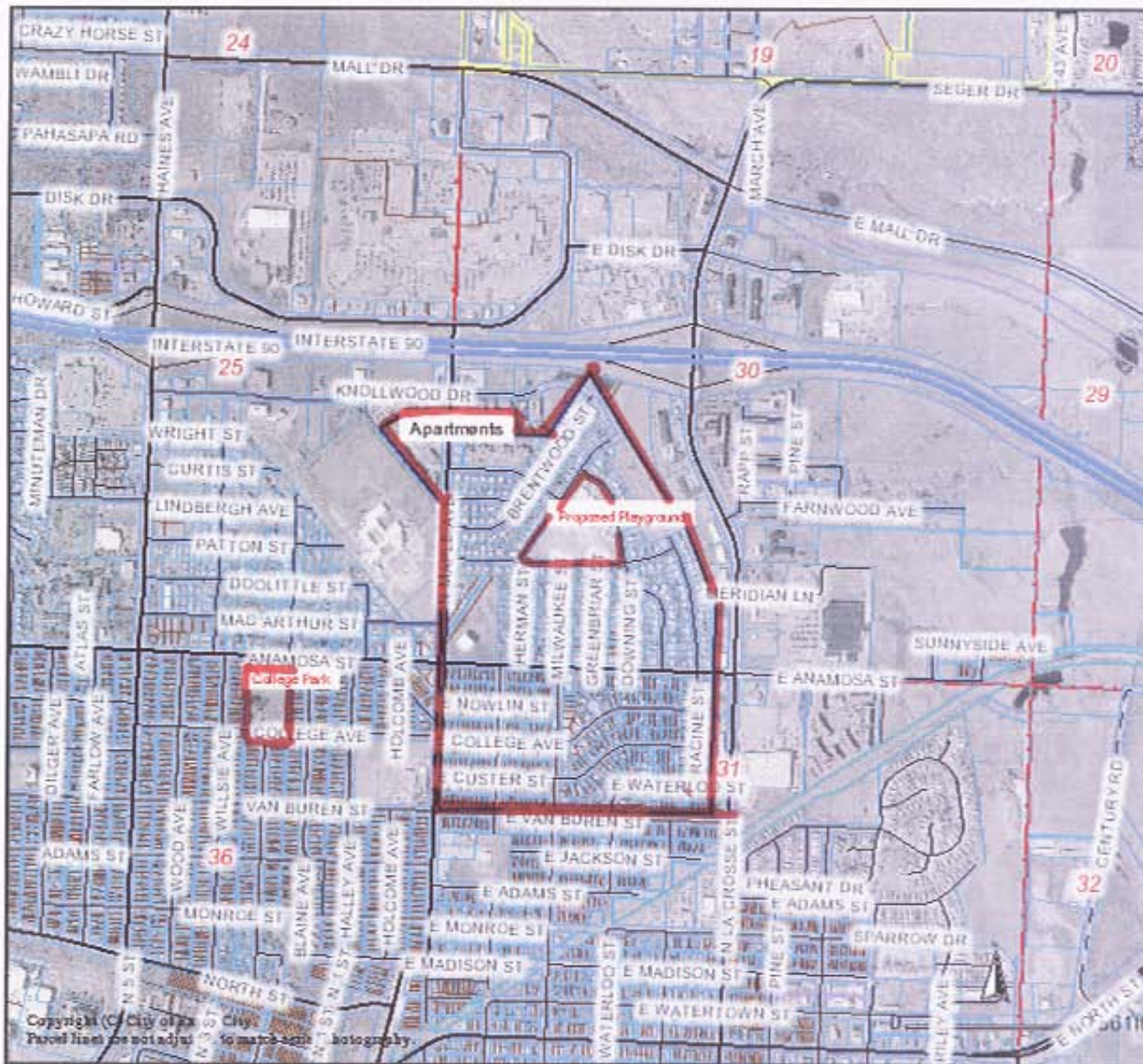
Low/Moderate Income Census Blocks



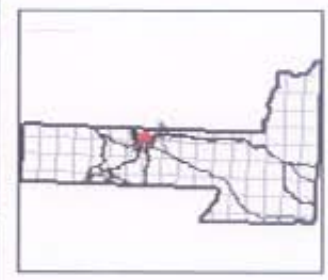
Legend
Census Blocks
Low/Moderate Income Census Blocks



Knollwood Heights Playground Neighborhood



Print Close



DISCLAIMER
 DISCLAIMER: This GIS data is provided 'as is' without warranty of any representation of accuracy, timeliness or completeness. The burden for determining accuracy, completeness, timeliness, merchantability and fitness for or the appropriateness for use rests solely on the requester. Rapid City and Pennington County make no warranties, express or implied, as to the use of the data. The applied warranties of merchantability or fitness for a particular purpose are specifically disclaimed. The requester acknowledges and accepts the limitations of the data, including the fact that the data is dynamic and is in a constant state of maintenance, correction and update. This document does not represent a legal survey of the land. There are no restrictions on distribution of printed Rapid City/Pennington County maps, other than the City of Rapid City copyright/credit notice be legible on the print. The User agrees to recognize and honor in perpetuity the copyrights, and other proprietary claims for the GIS Product Files established or produced by the City of Rapid City or the vendors furnishing said items to the City of Rapid City.

Copyright (C) City of Rapid City
 Parcel lines are not adjusted to match aerial photography.