

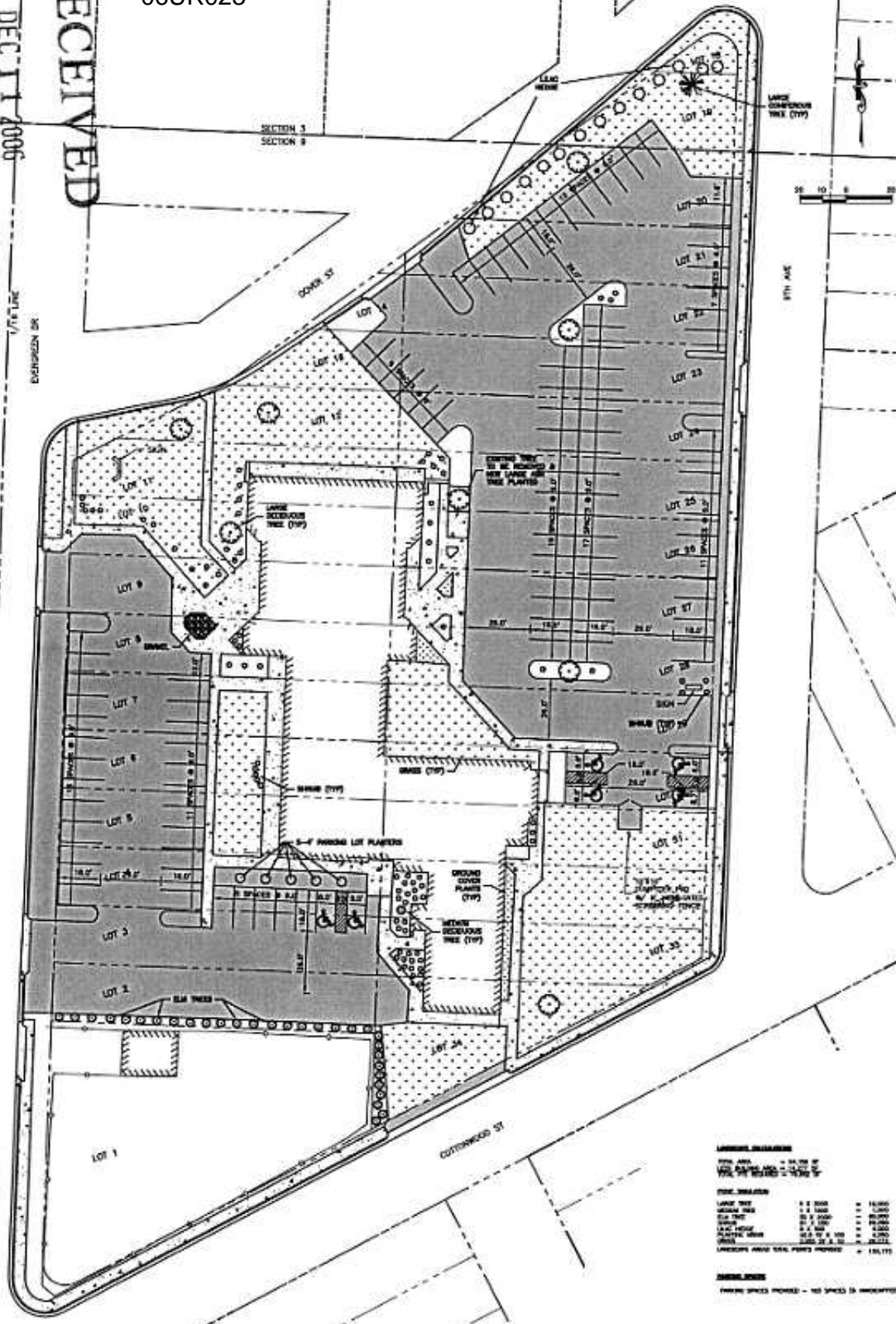
Rapid City Growth

DEC 11 2006

RECEIVED

06UR023

SECTION 1
SECTION 2



LANDSCAPE SCHEDULE

TOTAL AREA	14,720 SF	
TOTAL PLANTING AREA	14,720 SF	
TOTAL TREE PLANTING	14,720 SF	

ITEM QUANTITY	UNIT	PRICE	TOTAL
LARGE TREE	1 x 2000	\$10,000	\$10,000
MEDIUM TREE	1 x 1500	1,000	1,000
SMALL TREE	20 x 1000	80,000	160,000
LANDSCAPE	20 x 100	40,000	80,000
PLANTING	20 x 100	4,000	80,000
SHRUB	200 x 2 x 100	4,000	80,000
LANDSCAPE PLANT TOTAL PRICES PROPOSED			\$150,000

NOTES:
PLANTING SPECIES PROPOSED - SEE SPEC'S FOR IDENTIFICATION

DATE	BY	DATE	REVISION	APPROVED