

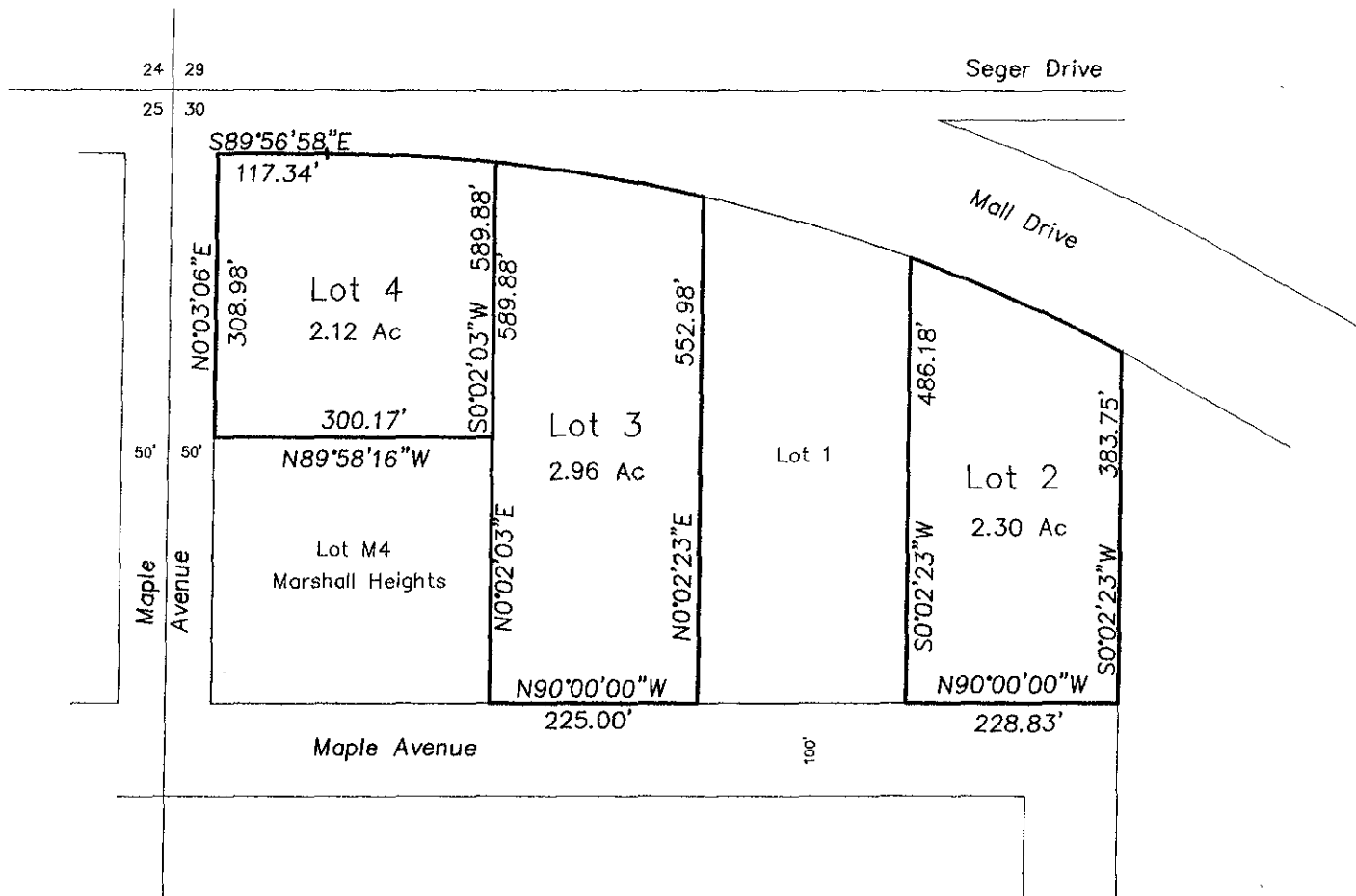
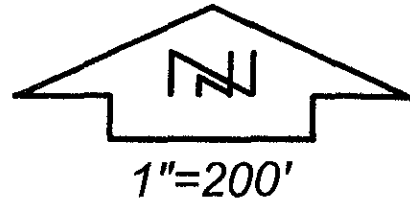
# LAYOUT

06SV069

## LOTS 2, 3 AND 4 OF LJS SUBDIVISION

(FORMERLY A PORTION OF THE UNPLATTED BALANCE OF THE NW1/4 OF SECTION 30, T2N, R8E, BHM)

LOCATED IN THE NW1/4 OF SECTION 30, T2N, R8E, BHM,  
RAPID CITY, PENNINGTON COUNTY, SOUTH DAKOTA



# PRELIMINARY

RECEIVED

OCT 27 2006

PREPARED BY:  
FISK LAND SURVEYING & CONSULTING ENGINEERS, INC.  
P.O. BOX 8154, RAPID CITY, SD 57709 (605) 348-1538 October 26, 2006

Registration Department  
NO.