

Plat of Lots 1 through 8 of Elysian Heights Subdivision and Dedicated Right-of-Way

(Formerly a portion of the N1/2 SW1/4 of Section 21, T1N, R7E, BHM)
located in the N1/2 SW1/4 of Section 21, T1N, R7E, BHM,
Rapid City, Pennington County, South Dakota

06PL171

Prepared by:
Flak Land Surveying & Consulting Engineers, Inc.
P.O. Box 8154
Rapid City, SD 57709
(605) 348-1538
Project No. 98-10-02

All residential dwellings shall be equipped
with fire suppression sprinkler systems.



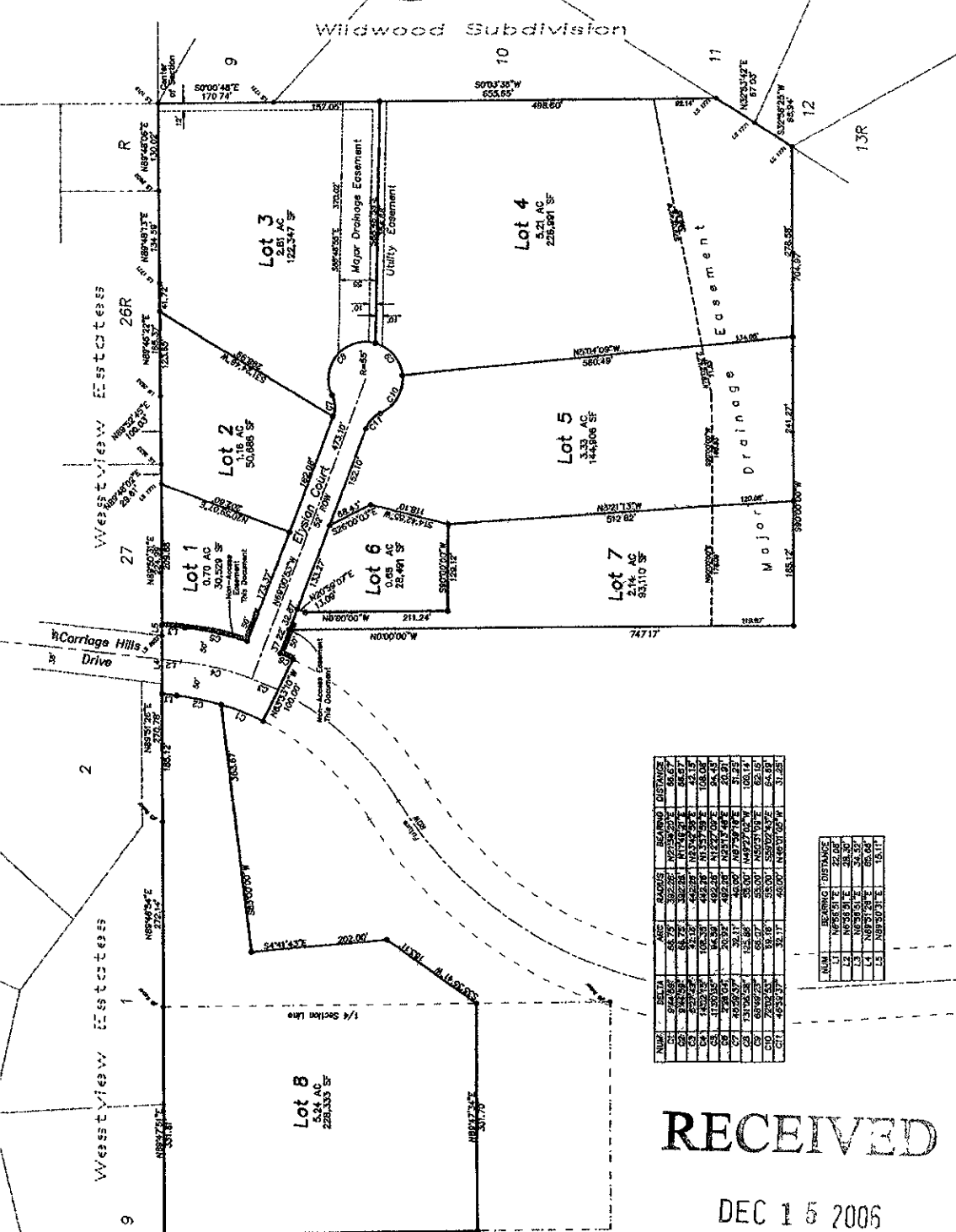
1" = 100'
October 12, 2006
Rev. Nov 12, 2006
Rev. Dec. 6, 2006

- = Found Survey Monument marked as noted
- ⊙ = Set Rebar with cap marked "RW Flak 6568"

8' Utility and Minor Drainage Easements
on the interior sides of all lot lines.

Carriage Hills Drive and Elysian Court, containing
1.07 Acres more or less, as shown hereon are hereby
dedicated as public right-of-way, however, such
dedication shall not be construed to mean a
donation of the fee of said land.

All Major Drainage Easements Shown Hereon
Shall Be Keep Free Of All Obstructions, Including
But Not Limited To Buildings, Walls, Fences,
Hedges, Trees And Shrubs. These Easements
Grant To All Public Authorities The Right To
Construct, Operate, Maintain, Inspect, And Repair
Such Improvements And Structures As It Deems
Expedient To Facilitate Drainage From Any Source.



| LINE | BEARING | RADIUS | ARC DISTANCE |
|------|-------------|---------|--------------|
| 1 | N85°45'42\" | 275.17' | 185.12' |
| 2 | N85°45'42\" | 275.17' | 185.12' |
| 3 | N85°45'42\" | 275.17' | 185.12' |
| 4 | N85°45'42\" | 275.17' | 185.12' |
| 5 | N85°45'42\" | 275.17' | 185.12' |
| 6 | N85°45'42\" | 275.17' | 185.12' |
| 7 | N85°45'42\" | 275.17' | 185.12' |
| 8 | N85°45'42\" | 275.17' | 185.12' |
| 9 | N85°45'42\" | 275.17' | 185.12' |
| 10 | N85°45'42\" | 275.17' | 185.12' |
| 11 | N85°45'42\" | 275.17' | 185.12' |
| 12 | N85°45'42\" | 275.17' | 185.12' |
| 13 | N85°45'42\" | 275.17' | 185.12' |
| 14 | N85°45'42\" | 275.17' | 185.12' |
| 15 | N85°45'42\" | 275.17' | 185.12' |
| 16 | N85°45'42\" | 275.17' | 185.12' |
| 17 | N85°45'42\" | 275.17' | 185.12' |
| 18 | N85°45'42\" | 275.17' | 185.12' |
| 19 | N85°45'42\" | 275.17' | 185.12' |
| 20 | N85°45'42\" | 275.17' | 185.12' |
| 21 | N85°45'42\" | 275.17' | 185.12' |
| 22 | N85°45'42\" | 275.17' | 185.12' |
| 23 | N85°45'42\" | 275.17' | 185.12' |
| 24 | N85°45'42\" | 275.17' | 185.12' |
| 25 | N85°45'42\" | 275.17' | 185.12' |
| 26 | N85°45'42\" | 275.17' | 185.12' |
| 27 | N85°45'42\" | 275.17' | 185.12' |
| 28 | N85°45'42\" | 275.17' | 185.12' |
| 29 | N85°45'42\" | 275.17' | 185.12' |
| 30 | N85°45'42\" | 275.17' | 185.12' |
| 31 | N85°45'42\" | 275.17' | 185.12' |
| 32 | N85°45'42\" | 275.17' | 185.12' |
| 33 | N85°45'42\" | 275.17' | 185.12' |
| 34 | N85°45'42\" | 275.17' | 185.12' |
| 35 | N85°45'42\" | 275.17' | 185.12' |
| 36 | N85°45'42\" | 275.17' | 185.12' |
| 37 | N85°45'42\" | 275.17' | 185.12' |
| 38 | N85°45'42\" | 275.17' | 185.12' |
| 39 | N85°45'42\" | 275.17' | 185.12' |
| 40 | N85°45'42\" | 275.17' | 185.12' |
| 41 | N85°45'42\" | 275.17' | 185.12' |
| 42 | N85°45'42\" | 275.17' | 185.12' |
| 43 | N85°45'42\" | 275.17' | 185.12' |
| 44 | N85°45'42\" | 275.17' | 185.12' |
| 45 | N85°45'42\" | 275.17' | 185.12' |
| 46 | N85°45'42\" | 275.17' | 185.12' |
| 47 | N85°45'42\" | 275.17' | 185.12' |
| 48 | N85°45'42\" | 275.17' | 185.12' |
| 49 | N85°45'42\" | 275.17' | 185.12' |
| 50 | N85°45'42\" | 275.17' | 185.12' |
| 51 | N85°45'42\" | 275.17' | 185.12' |
| 52 | N85°45'42\" | 275.17' | 185.12' |
| 53 | N85°45'42\" | 275.17' | 185.12' |
| 54 | N85°45'42\" | 275.17' | 185.12' |
| 55 | N85°45'42\" | 275.17' | 185.12' |
| 56 | N85°45'42\" | 275.17' | 185.12' |
| 57 | N85°45'42\" | 275.17' | 185.12' |
| 58 | N85°45'42\" | 275.17' | 185.12' |
| 59 | N85°45'42\" | 275.17' | 185.12' |
| 60 | N85°45'42\" | 275.17' | 185.12' |
| 61 | N85°45'42\" | 275.17' | 185.12' |
| 62 | N85°45'42\" | 275.17' | 185.12' |
| 63 | N85°45'42\" | 275.17' | 185.12' |
| 64 | N85°45'42\" | 275.17' | 185.12' |
| 65 | N85°45'42\" | 275.17' | 185.12' |
| 66 | N85°45'42\" | 275.17' | 185.12' |
| 67 | N85°45'42\" | 275.17' | 185.12' |
| 68 | N85°45'42\" | 275.17' | 185.12' |
| 69 | N85°45'42\" | 275.17' | 185.12' |
| 70 | N85°45'42\" | 275.17' | 185.12' |
| 71 | N85°45'42\" | 275.17' | 185.12' |
| 72 | N85°45'42\" | 275.17' | 185.12' |
| 73 | N85°45'42\" | 275.17' | 185.12' |
| 74 | N85°45'42\" | 275.17' | 185.12' |
| 75 | N85°45'42\" | 275.17' | 185.12' |
| 76 | N85°45'42\" | 275.17' | 185.12' |
| 77 | N85°45'42\" | 275.17' | 185.12' |
| 78 | N85°45'42\" | 275.17' | 185.12' |
| 79 | N85°45'42\" | 275.17' | 185.12' |
| 80 | N85°45'42\" | 275.17' | 185.12' |
| 81 | N85°45'42\" | 275.17' | 185.12' |
| 82 | N85°45'42\" | 275.17' | 185.12' |
| 83 | N85°45'42\" | 275.17' | 185.12' |
| 84 | N85°45'42\" | 275.17' | 185.12' |
| 85 | N85°45'42\" | 275.17' | 185.12' |
| 86 | N85°45'42\" | 275.17' | 185.12' |
| 87 | N85°45'42\" | 275.17' | 185.12' |
| 88 | N85°45'42\" | 275.17' | 185.12' |
| 89 | N85°45'42\" | 275.17' | 185.12' |
| 90 | N85°45'42\" | 275.17' | 185.12' |
| 91 | N85°45'42\" | 275.17' | 185.12' |
| 92 | N85°45'42\" | 275.17' | 185.12' |
| 93 | N85°45'42\" | 275.17' | 185.12' |
| 94 | N85°45'42\" | 275.17' | 185.12' |
| 95 | N85°45'42\" | 275.17' | 185.12' |
| 96 | N85°45'42\" | 275.17' | 185.12' |
| 97 | N85°45'42\" | 275.17' | 185.12' |
| 98 | N85°45'42\" | 275.17' | 185.12' |
| 99 | N85°45'42\" | 275.17' | 185.12' |
| 100 | N85°45'42\" | 275.17' | 185.12' |

| LINE | BEARING | DISTANCE |
|------|-------------|----------|
| 11 | N85°45'42\" | 275.17' |
| 12 | N85°45'42\" | 275.17' |
| 13 | N85°45'42\" | 275.17' |
| 14 | N85°45'42\" | 275.17' |
| 15 | N85°45'42\" | 275.17' |
| 16 | N85°45'42\" | 275.17' |
| 17 | N85°45'42\" | 275.17' |
| 18 | N85°45'42\" | 275.17' |
| 19 | N85°45'42\" | 275.17' |
| 20 | N85°45'42\" | 275.17' |
| 21 | N85°45'42\" | 275.17' |
| 22 | N85°45'42\" | 275.17' |
| 23 | N85°45'42\" | 275.17' |
| 24 | N85°45'42\" | 275.17' |
| 25 | N85°45'42\" | 275.17' |
| 26 | N85°45'42\" | 275.17' |
| 27 | N85°45'42\" | 275.17' |
| 28 | N85°45'42\" | 275.17' |
| 29 | N85°45'42\" | 275.17' |
| 30 | N85°45'42\" | 275.17' |
| 31 | N85°45'42\" | 275.17' |
| 32 | N85°45'42\" | 275.17' |
| 33 | N85°45'42\" | 275.17' |
| 34 | N85°45'42\" | 275.17' |
| 35 | N85°45'42\" | 275.17' |
| 36 | N85°45'42\" | 275.17' |
| 37 | N85°45'42\" | 275.17' |
| 38 | N85°45'42\" | 275.17' |
| 39 | N85°45'42\" | 275.17' |
| 40 | N85°45'42\" | 275.17' |
| 41 | N85°45'42\" | 275.17' |
| 42 | N85°45'42\" | 275.17' |
| 43 | N85°45'42\" | 275.17' |
| 44 | N85°45'42\" | 275.17' |
| 45 | N85°45'42\" | 275.17' |
| 46 | N85°45'42\" | 275.17' |
| 47 | N85°45'42\" | 275.17' |
| 48 | N85°45'42\" | 275.17' |
| 49 | N85°45'42\" | 275.17' |
| 50 | N85°45'42\" | 275.17' |
| 51 | N85°45'42\" | 275.17' |
| 52 | N85°45'42\" | 275.17' |
| 53 | N85°45'42\" | 275.17' |
| 54 | N85°45'42\" | 275.17' |
| 55 | N85°45'42\" | 275.17' |
| 56 | N85°45'42\" | 275.17' |
| 57 | N85°45'42\" | 275.17' |
| 58 | N85°45'42\" | 275.17' |
| 59 | N85°45'42\" | 275.17' |
| 60 | N85°45'42\" | 275.17' |
| 61 | N85°45'42\" | 275.17' |
| 62 | N85°45'42\" | 275.17' |
| 63 | N85°45'42\" | 275.17' |
| 64 | N85°45'42\" | 275.17' |
| 65 | N85°45'42\" | 275.17' |
| 66 | N85°45'42\" | 275.17' |
| 67 | N85°45'42\" | 275.17' |
| 68 | N85°45'42\" | 275.17' |
| 69 | N85°45'42\" | 275.17' |
| 70 | N85°45'42\" | 275.17' |
| 71 | N85°45'42\" | 275.17' |
| 72 | N85°45'42\" | 275.17' |
| 73 | N85°45'42\" | 275.17' |
| 74 | N85°45'42\" | 275.17' |
| 75 | N85°45'42\" | 275.17' |
| 76 | N85°45'42\" | 275.17' |
| 77 | N85°45'42\" | 275.17' |
| 78 | N85°45'42\" | 275.17' |
| 79 | N85°45'42\" | 275.17' |
| 80 | N85°45'42\" | 275.17' |
| 81 | N85°45'42\" | 275.17' |
| 82 | N85°45'42\" | 275.17' |
| 83 | N85°45'42\" | 275.17' |
| 84 | N85°45'42\" | 275.17' |
| 85 | N85°45'42\" | 275.17' |
| 86 | N85°45'42\" | 275.17' |
| 87 | N85°45'42\" | 275.17' |
| 88 | N85°45'42\" | 275.17' |
| 89 | N85°45'42\" | 275.17' |
| 90 | N85°45'42\" | 275.17' |
| 91 | N85°45'42\" | 275.17' |
| 92 | N85°45'42\" | 275.17' |
| 93 | N85°45'42\" | 275.17' |
| 94 | N85°45'42\" | 275.17' |
| 95 | N85°45'42\" | 275.17' |
| 96 | N85°45'42\" | 275.17' |
| 97 | N85°45'42\" | 275.17' |
| 98 | N85°45'42\" | 275.17' |
| 99 | N85°45'42\" | 275.17' |
| 100 | N85°45'42\" | 275.17' |

RECEIVED

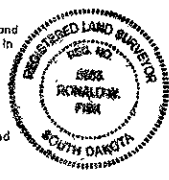
DEC 15 2006

Rapid City Growth
Management Department

Plat of Lots 1 through 8 of Elysian Heights Subdivision and Dedicated Right-of-Way

(Formerly a portion of the N1/2 SW1/4 of Section 21, T1N, R7E, BHM)
located in the N1/2 SW1/4 of Section 21, T1N, R7E, BHM,
Rapid City, Pennington County, South Dakota

Prepared by:
Flak Land Surveying & Consulting Engineers, Inc.
P.O. Box 6164
Rapid City, SD 57709
(605) 348-1538
Project No. 96-10-02



CERTIFICATE OF SURVEYOR State of South Dakota County of Pennington ss

I, Ronald W. Flak, Registered Land Surveyor No. 6565 in the State of South Dakota, do hereby certify that being so authorized, I made the survey and within plat of the land shown and described hereon and that the same is, in all things, true and correct to the best of my knowledge and belief in Witness Whereof, I have hereunto set my hand and official seal this 7th day of December, 20__

Ronald W. Flak, Registered Land Surveyor No. 6565 Flak

CERTIFICATE AND ACKNOWLEDGEMENT OF OWNERSHIP State of South Dakota County of Pennington ss

I, Harley F. Taylor, do hereby certify that I am an owner of the above described land and that I did authorize and do hereby approve the survey and within plat of said land, and that development of this land shall conform to all existing applicable zoning, subdivision and erosion and sediment control regulations.

Harley F. Taylor -- (owner) _____
On this _____ day of _____, 20__, before me, a Notary Public, personally appeared Harley F. Taylor, known to me to be the person described in the foregoing instrument and acknowledged to me that he signed the same.

Notary Public _____ My Commission Expires _____

CERTIFICATE AND ACKNOWLEDGEMENT OF OWNERSHIP State of _____ County of _____

I, Jacolyn T. Silngsby, do hereby certify that I am an owner of the above described land and that I did authorize and do hereby approve the survey and within plat of said land, and that development of this land shall conform to all existing applicable zoning, subdivision and erosion and sediment control regulations.

Jacolyn T. Silngsby (a.k.a. Jacolyn K. Silngsby) -- (owner) _____
On this _____ day of _____, 20__, before me, a Notary Public, personally appeared Jacolyn T. Silngsby, known to me to be the person described in the foregoing instrument and acknowledged to me that he signed the same.

Notary Public _____ My Commission Expires _____

CERTIFICATE AND ACKNOWLEDGEMENT OF OWNERSHIP State of _____ County of _____

I, Joan T. LaFon, do hereby certify that I am an owner of the above described land and that I did authorize and do hereby approve the survey and within plat of said land, and that development of this land shall conform to all existing applicable zoning, subdivision and erosion and sediment control regulations.

Joan T. LaFon (a.k.a. Joan B. LaFon) -- (owner) _____
On this _____ day of _____, 20__, before me, a Notary Public, personally appeared Joan T. LaFon, known to me to be the person described in the foregoing instrument and acknowledged to me that he signed the same.

Notary Public _____ My Commission Expires _____

CERTIFICATE AND ACKNOWLEDGEMENT OF OWNERSHIP State of _____ County of _____

I, Catherine T. Couch, do hereby certify that I am an owner of the above described land and that I did authorize and do hereby approve the survey and within plat of said land, and that development of this land shall conform to all existing applicable zoning, subdivision and erosion and sediment control regulations.

Catherine T. Couch (a.k.a. Catherine M. Couch) -- (owner) _____
On this _____ day of _____, 20__, before me, a Notary Public, personally appeared Catherine T. Couch, known to me to be the person described in the foregoing instrument and acknowledged to me that he signed the same.

Notary Public _____ My Commission Expires _____

CERTIFICATE AND ACKNOWLEDGEMENT OF OWNERSHIP State of _____ County of _____

I, Lynn J. Eckrich, do hereby certify that I am an owner of the above described land and that I did authorize and do hereby approve the survey and within plat of said land, and that development of this land shall conform to all existing applicable zoning, subdivision and erosion and sediment control regulations.

Lynn J. Eckrich -- (owner) _____
On this _____ day of _____, 20__, before me, a Notary Public, personally appeared Lynn J. Eckrich, known to me to be the person described in the foregoing instrument and acknowledged to me that he signed the same.

Notary Public _____ My Commission Expires _____

CERTIFICATE OF STREET AUTHORITY State of South Dakota County of Pennington ss

The location of the proposed access road to the County of State Highway or City Street as shown hereon is hereby approved Any change in the location of the proposed access shall require additional approval.

Street Authority _____ Date _____

CERTIFICATE AND COUNTY TREASURER State of South Dakota County of Pennington ss

I, Treasurer of Pennington County, do hereby certify that all taxes which are liens upon the within described lands have been fully paid according to the records of my office.

Dated this _____ day of _____, 20__ Pennington County Treasurer _____

CERTIFICATE OF DIRECTOR OF EQUALIZATION State of South Dakota County of Pennington ss

I, Director of Equalization of Pennington County, do hereby certify that I have on file in my office a copy of the within plat.

Signed this _____ day of _____, 20__ Pennington County Director of Equalization _____
APPROVED: _____ DATE: _____

CERTIFICATE OF FINANCE OFFICER State of South Dakota County of Pennington ss

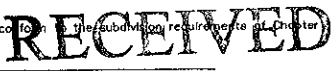
I, Finance Officer of the City of Rapid City, do hereby certify that all special assessments which are liens upon the within described lands are fully paid according to the records of my office.

Dated this _____ day of _____, 20__ Rapid City Finance Officer _____

CERTIFICATE OF GROWTH MANAGEMENT DIRECTOR State of South Dakota County of Pennington ss

I, Growth Management Director of the City of Rapid City, have reviewed this plat and have found it to conform to the subdivision requirements of Chapter 16 08 CSD of the Rapid City Municipal Code and as such I have approved this Plat as a Final Plat.

Dated this _____ day of _____, 20__ Rapid City Growth Management Director _____



CERTIFICATE OF FINANCE OFFICER State of South Dakota County of Pennington ss

I, Finance Officer of the City of Rapid City, do hereby certify that the Growth Management Director of the City of Rapid City has approved this Final Plat as shown hereon.

Dated this _____ day of _____, 20__ Rapid City Finance Officer _____

DEC 15 2006

CERTIFICATE OF THE REGISTER OF DEEDS State of South Dakota County of Pennington ss

Filed for record this _____ day of _____, 20__ at _____ o'clock _____ M., and recorded in Book _____ of Plate on Page _____

Pennington County Register of Deeds _____ Fees _____

Rapid City Growth Management Department