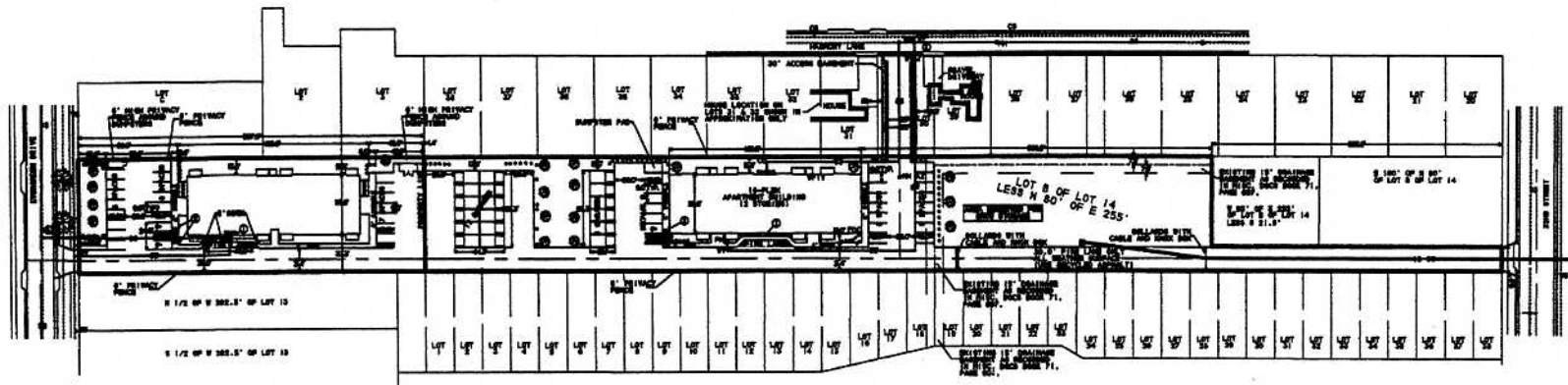




SCALE: 1" = 30'  
MAY 1, 2005



**LANDSCAPING POINTS TABLE**

(LOT 8 OF LOT 14)

LANDSCAPING REQUIREMENTS FOR LOT 8 APARTMENT BUILDING: 82,729 PFS.  
(11,363 SF = 0.265)

LANDSCAPING POINTS:		32,729 PFS MIN. (82)
WITHIN 20 FEET OF PARKING (SHARED-11,363 PFS)		
200 SF OF GRASS (10 PFS / SF)	2,000	
20 SHRUBS (200 PFS EA)	4,000	
5 SMALL TREES (200 PFS EA)	1,000	
REMAINDER OF LOT		
200 SF OF GRASS (10 PFS / SF)	2,000	
2 SHRUBS (200 PFS EA)	400	
WYTHE P.L.S.	1,400	8,329
10 SMALL TREES (100 PFS / SF)	1,000	
2 LARGE TREES (2000 PFS EA)	4,000	

**LANDSCAPING POINTS TABLE**

(LOT 9 OF LOT 14)

LANDSCAPING REQUIREMENTS FOR LOT 9 APARTMENT BUILDING: 60,274 PFS.  
(7,631 SF = 0.166)

LANDSCAPING POINTS:		60,274 PFS MIN. (60)
WITHIN 20 FEET OF PARKING (SHARED-10,189 PFS)		
200 SF OF GRASS (10 PFS / SF)	2,000	
20 SHRUBS (200 PFS EA)	4,000	
10 SMALL TREES (200 PFS EA)	2,000	
REMAINDER OF LOT		
2,000 SF OF GRASS (10 PFS / SF)	20,000	24,000
17 SHRUBS (200 PFS EA)	3,400	

**PARKING REQUIREMENTS**

APARTMENT LOT #1:	16 X 1.5	24 SPACES
	30 SPACES PROVIDED (82)	
APARTMENT LOT #1:	16 X 1.5	24 SPACES
	32 SPACES PROVIDED (PLAN & SHOWN) (82)	

- ① 30" SM. TREE (200 PFS EACH)
- ② 20" SM. TREE (100 PFS EACH)
- ③ 18" SM. TREE (80 PFS EACH)
- ④ 16" SM. TREE (60 PFS EACH)
- ⑤ 14" SM. TREE (40 PFS EACH)
- ⑥ 12" SM. TREE (20 PFS EACH)
- ⑦ 10" SM. TREE (10 PFS EACH)
- ⑧ 8" SM. TREE (5 PFS EACH)
- ⑨ 6" SM. TREE (2 PFS EACH)
- ⑩ 4" SM. TREE (1 PFS EACH)

- ① 2" SM. TREE (100 PFS EACH)
- ② 1" SM. TREE (50 PFS EACH)
- ③ 1" SM. TREE (25 PFS EACH)
- ④ 1" SM. TREE (12 PFS EACH)
- ⑤ 1" SM. TREE (6 PFS EACH)
- ⑥ 1" SM. TREE (3 PFS EACH)
- ⑦ 1" SM. TREE (1 PFS EACH)
- ⑧ 1" SM. TREE (0.5 PFS EACH)
- ⑨ 1" SM. TREE (0.2 PFS EACH)
- ⑩ 1" SM. TREE (0.1 PFS EACH)

- ① 1" SM. TREE (100 PFS EACH)
- ② 1" SM. TREE (50 PFS EACH)
- ③ 1" SM. TREE (25 PFS EACH)
- ④ 1" SM. TREE (12 PFS EACH)
- ⑤ 1" SM. TREE (6 PFS EACH)
- ⑥ 1" SM. TREE (3 PFS EACH)
- ⑦ 1" SM. TREE (1 PFS EACH)
- ⑧ 1" SM. TREE (0.5 PFS EACH)
- ⑨ 1" SM. TREE (0.2 PFS EACH)
- ⑩ 1" SM. TREE (0.1 PFS EACH)

- ① 2" SM. TREE (200 PFS EACH)
- ② 1" SM. TREE (100 PFS EACH)
- ③ 1" SM. TREE (50 PFS EACH)
- ④ 1" SM. TREE (25 PFS EACH)
- ⑤ 1" SM. TREE (12 PFS EACH)
- ⑥ 1" SM. TREE (6 PFS EACH)
- ⑦ 1" SM. TREE (3 PFS EACH)
- ⑧ 1" SM. TREE (1 PFS EACH)
- ⑨ 1" SM. TREE (0.5 PFS EACH)
- ⑩ 1" SM. TREE (0.2 PFS EACH)
- ⑪ 1" SM. TREE (0.1 PFS EACH)

**SIGN LEGEND**

- ① "PINK LINE" SIGN
- ② "WOODCHIP PAVING" SIGN
- ③ "STOP" SIGN

**REMARKS:** SEE PLAN FOR ALL SIGN PLACEMENTS. ALL SIGN PLACEMENTS SHALL BE IN ACCORDANCE WITH THE CITY OF RAPID CITY, SOUTH DAKOTA, SIGNAGE ORDINANCE. ALL SIGN PLACEMENTS SHALL BE IN ACCORDANCE WITH THE CITY OF RAPID CITY, SOUTH DAKOTA, SIGNAGE ORDINANCE.

**REMARKS:** SEE PLAN FOR ALL SIGN PLACEMENTS. ALL SIGN PLACEMENTS SHALL BE IN ACCORDANCE WITH THE CITY OF RAPID CITY, SOUTH DAKOTA, SIGNAGE ORDINANCE. ALL SIGN PLACEMENTS SHALL BE IN ACCORDANCE WITH THE CITY OF RAPID CITY, SOUTH DAKOTA, SIGNAGE ORDINANCE.

**SECTION 1: SIGN PLACEMENT**

**SECTION 2: SIGN PLACEMENT**

**SECTION 3: SIGN PLACEMENT**

**SECTION 4: SIGN PLACEMENT**

**SECTION 5: SIGN PLACEMENT**

**SECTION 6: SIGN PLACEMENT**

RECEIVED

NOV 14 2006

Rapid City Growth Management Department

BRITTON ENGINEERING & LAND SURVEYING, INC.  
11750 N. HIGHWAY 79  
BLACK HAWK, SD 57718  
PH. (605) 716-7988

LOT A & LOT B OF 14 LESS N 80' OF E 255' OF LOT B, PLATTED SEC 4, T1N. 47E, B1W1, RAPID CITY PENNINGTON COUNTY, SOUTH DAKOTA

LAYOUT & LANDSCAPE PLAN  
EVERGREEN APARTMENTS  
BOBBY & GENAE SUNDBY

NOV 14 2006

3  
9