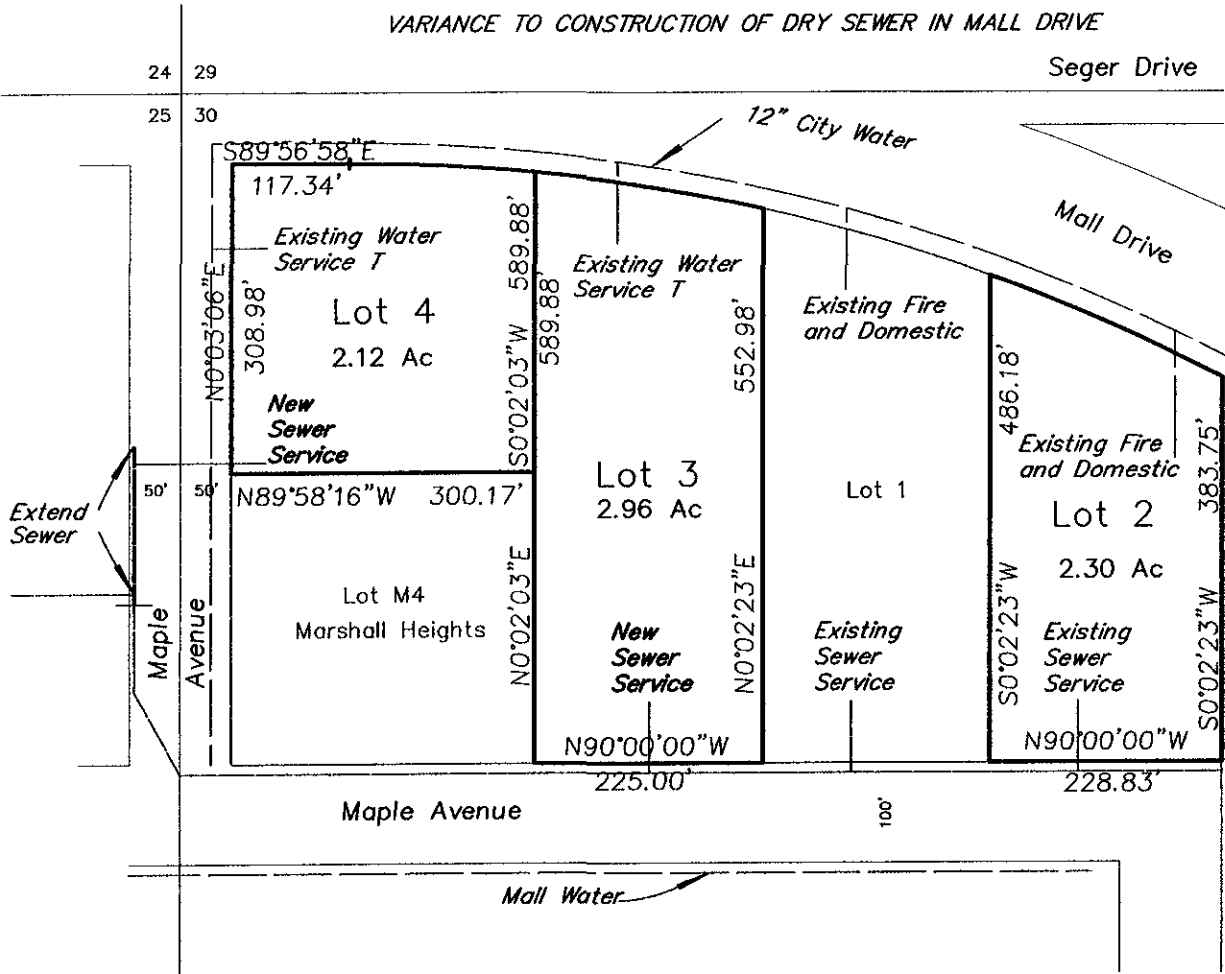
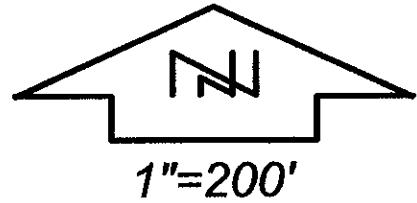


MASTER UTILITY PLAN

LOTS 2, 3 AND 4 OF LJS SUBDIVISION

(FORMERLY A PORTION OF THE UNPLATTED BALANCE OF THE NW1/4 OF SECTION 30, T2N, R8E, BHM)

LOCATED IN THE NW1/4 OF SECTION 30, T2N, R8E, BHM,
RAPID CITY, PENNINGTON COUNTY, SOUTH DAKOTA



- 1) VARIANCE TO CITY WATER MAIN IN E-W MAPLE AVENUE
- 2) VARIANCE TO CITY SEWER MAIN (DRY) IN MALL DRIVE

RECEIVED

DEC 18 2006

Rapid City Growth Management Department

