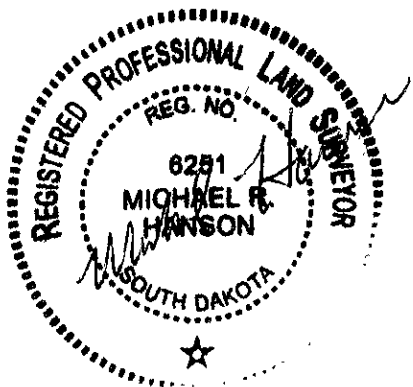


06VR010

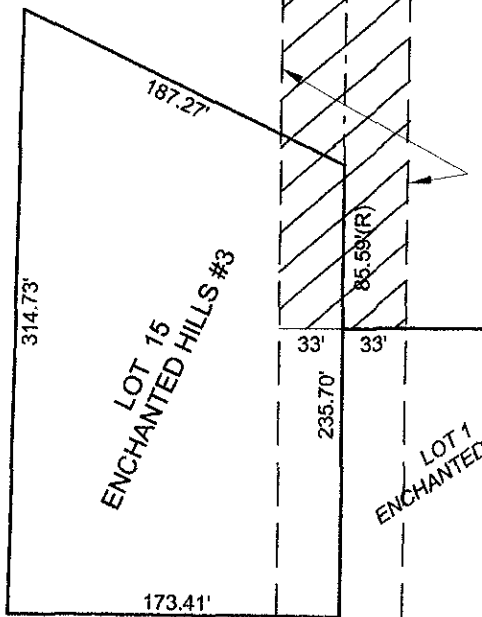


1"=100'



UNPLATTED
SE1/4NE1/4

UNPLATTED
SW1/4NW1/4



PORTION OF SECTION LINE
R.O.W. TO BE VACATED BY
THIS DOCUMENT

ENCHANTMENT ROAD

PREPARED BY
HANSON SURVEYING & MAPPING
832 HORACE MANN DRIVE
RAPID CITY, SD 57701
605-388-9652

EXHIBIT A

VACATION OF SECTION LINE RIGHT-OF-WAY
SE1/4NE1/4 OF SECTION 23, T1N, R7E, B.H.M.
SW1/4NW1/4 OF SECTION 24, T1N, R7E, B.H.M.
AND LOT 15 OF ENCHANTED HILLS SUBD. #3
RAPID CITY, PENNINGTON COUNTY, SOUTH DAKOTA

11/08/06