

**SPECIFICATIONS TO BE USED**

ALL WORK SHALL BE CONSTRUCTED IN ACCORDANCE WITH THE CITY OF RAPID CITY STANDARD SPECIFICATIONS FOR PUBLIC WORKS CONSTRUCTION 2004 EDITION WITH ALL CURRENT UPDATES.

**UTILITIES**

UTILITY LOCATES WERE NOT OBTAINED FOR THE SURVEY SHOWN.

ALL UTILITY COMPANIES SHALL BE CONTACTED BY THE CONTRACTOR BEFORE WORK IS COMMENCED.

**UTILITIES**

SOUTH DAKOTA ONE CALL  
1-800-781-7474

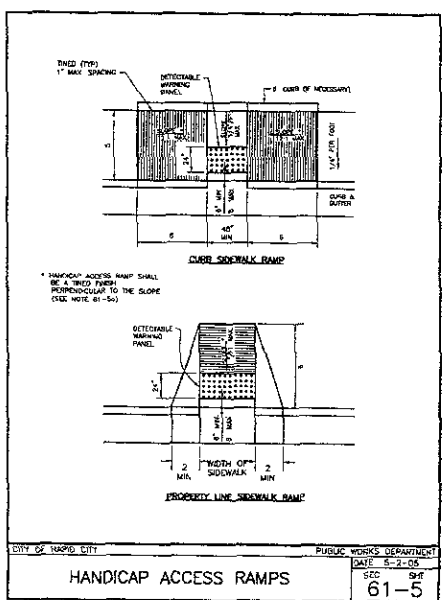
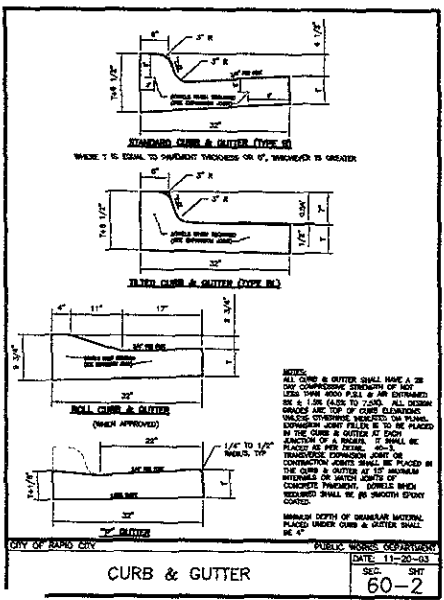
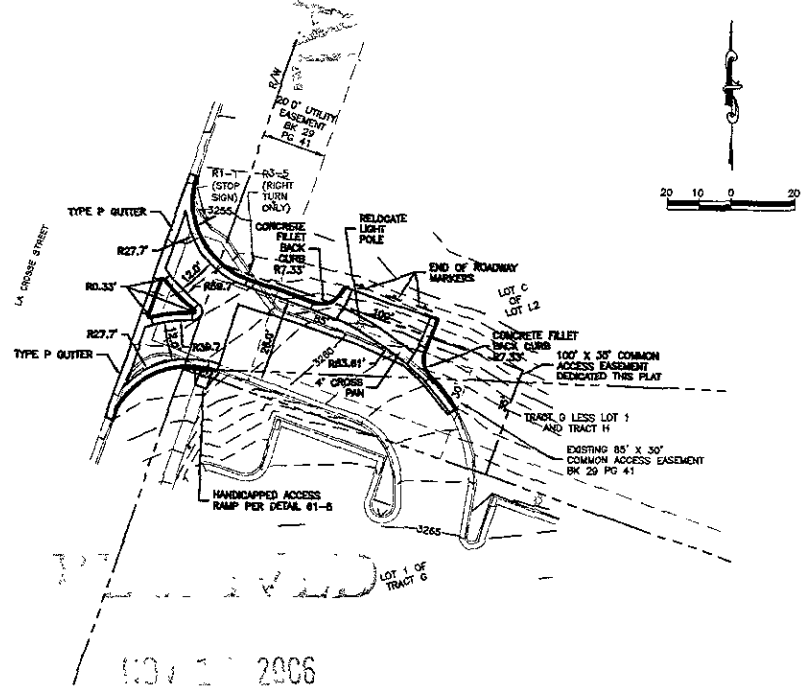
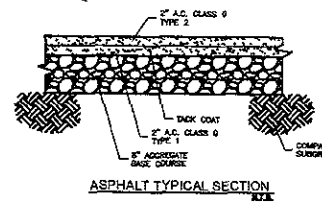
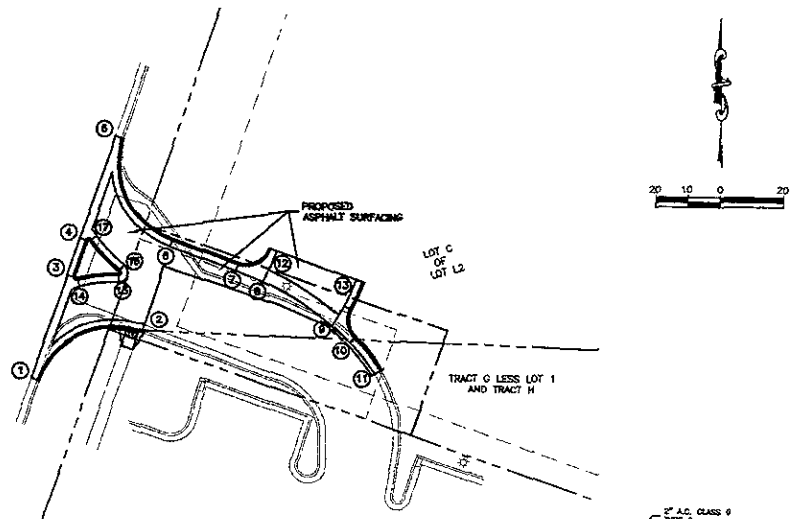
**NOTES**

- EXISTING TOPOGRAPHY AND EXISTING STRUCTURES SHOWN WERE OBTAINED FROM A LIMITED FIELD SURVEY COMPLETED BY FERBER ENGINEERING COMPANY IN SEPTEMBER 2005.
- COORDINATES AND RADII LISTED ARE TO EDGE OF PAVEMENT UNLESS OTHERWISE NOTED.
- ELEVATIONS LISTED ARE TO EDGE OF PAVEMENT UNLESS OTHERWISE NOTED.
- GRADE AREAS NOT SURFACED OR OUTSIDE OF CURB AND GUTTER TO TIE TO EXISTING GROUND AND 3:1 SLOPE MAXIMUM.
- ALL DISTURBED AREAS NOT RECEIVING "HARD SURFACING" SHALL HAVE TOPSOIL REPLACED AND SHALL BE SEED, FERTILIZED AND MULCHED ACCORDING TO THE RAPID CITY STANDARD STANDARD SPECIFICATION.

**CURB NOTES**

- N=656673.52  
E=1214947.10  
E.P. ELEV = 3258.57  
MATCH EXISTING
- N=656690.53  
E=1214952.55  
E.P. ELEV = 3258.29  
MATCH EXISTING
- N=659706.22  
E=1214955.44  
E.P. ELEV = 3256.42
- N=659717.38  
E=1214962.32  
E.P. ELEV = 3255.74
- N=659750.16  
E=1214973.69  
E.P. ELEV = 3253.85  
MATCH EXISTING
- N=659715.08  
E=1214960.54  
E.P. ELEV = 3258.24
- N=659707.69  
E=1215011.22  
E.P. ELEV = 3258.77
- N=659704.54  
E=1215019.43  
E.P. ELEV = 3259.49
- N=659690.45  
E=1215041.28  
E.P. ELEV = 3261.40
- N=659684.99  
E=1215046.85  
E.P. ELEV = 3261.92
- N=659675.41  
E=1215054.52  
E.P. ELEV = 3262.64  
MATCH EXISTING
- N=659713.81  
E=1215026.03  
E.P. ELEV = 3259.99
- N=659705.26  
E=1215043.58  
E.P. ELEV = 3261.90
- N=659702.38  
E=1214982.05  
E.P. ELEV = 3256.55
- N=659703.95  
E=1214974.23  
E.P. ELEV = 3256.90
- N=659709.35  
E=1214975.11  
E.P. ELEV = 3256.65
- N=659718.16  
E=1214967.51  
E.P. ELEV = 3255.96

LA COURSE STREET



APPROVED	REVISION	DATE	NO.	AS SHOWN	SCALE	DATE	BY	CHK	APP	DRW

**Ferber Engineering, Inc.**  
 Civil Engineers • Water Resources • Transportation • Land Surveying  
 729 E. Main Street • Rapid City, SD 57701 • Phone: (605) 342-3111

**RIGHT IN RIGHT OUT SHARED ACCESS**  
 AKERS PROPERTY

PROJECT NO. J05-111  
 SHEET NO. 1 OF 1

CITY OF RAPID CITY PUBLIC WORKS DEPARTMENT  
 DATE 5-2-06  
 SEC 61-5