

MASTER UTILITY PLAN

06PL175 / 06SV069

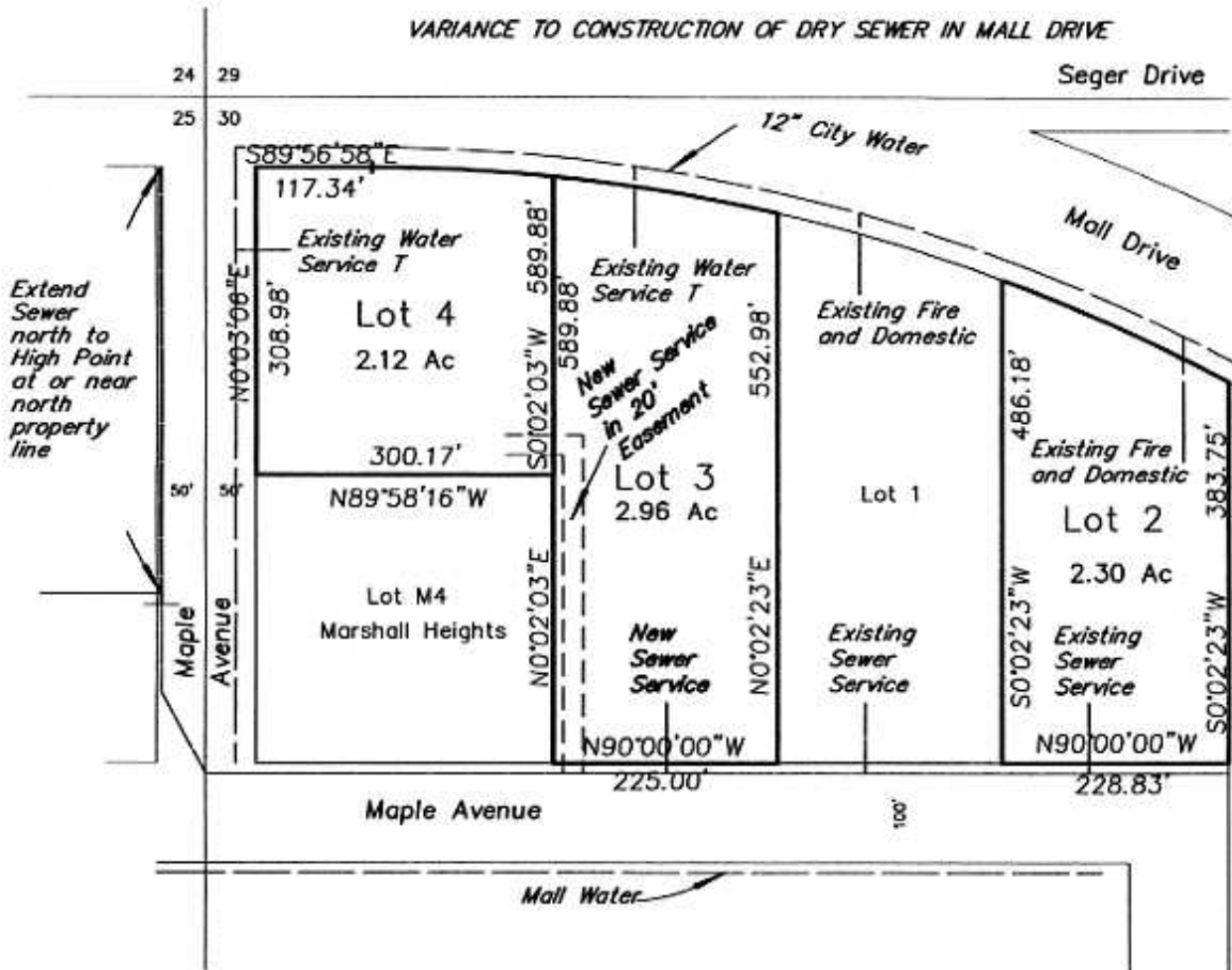
LOTS 2, 3 AND 4 OF LJS SUBDIVISION

(FORMERLY A PORTION OF THE UNPLATTED BALANCE OF THE NW1/4 OF SECTION 30, T2N, R8E, BHM)

LOCATED IN THE NW1/4 OF SECTION 30, T2N, R8E, BHM,
RAPID CITY, PENNINGTON COUNTY, SOUTH DAKOTA



1"=200'



- 1) VARIANCE TO CITY WATER MAIN IN E-W MAPLE AVENUE
- 2) VARIANCE TO CITY SEWER MAIN (DRY) IN MALL DRIVE

RECEIVED

DEC 05 2006

PREPARED BY:
FISK LAND SURVEYING & CONSULTING ENGINEERS, INC.
P.O. BOX 8154, RAPID CITY, SD 57709 (605) 348-1538 December 5, 2006

Planning & Growth
Management Department
NO. 06-10-04