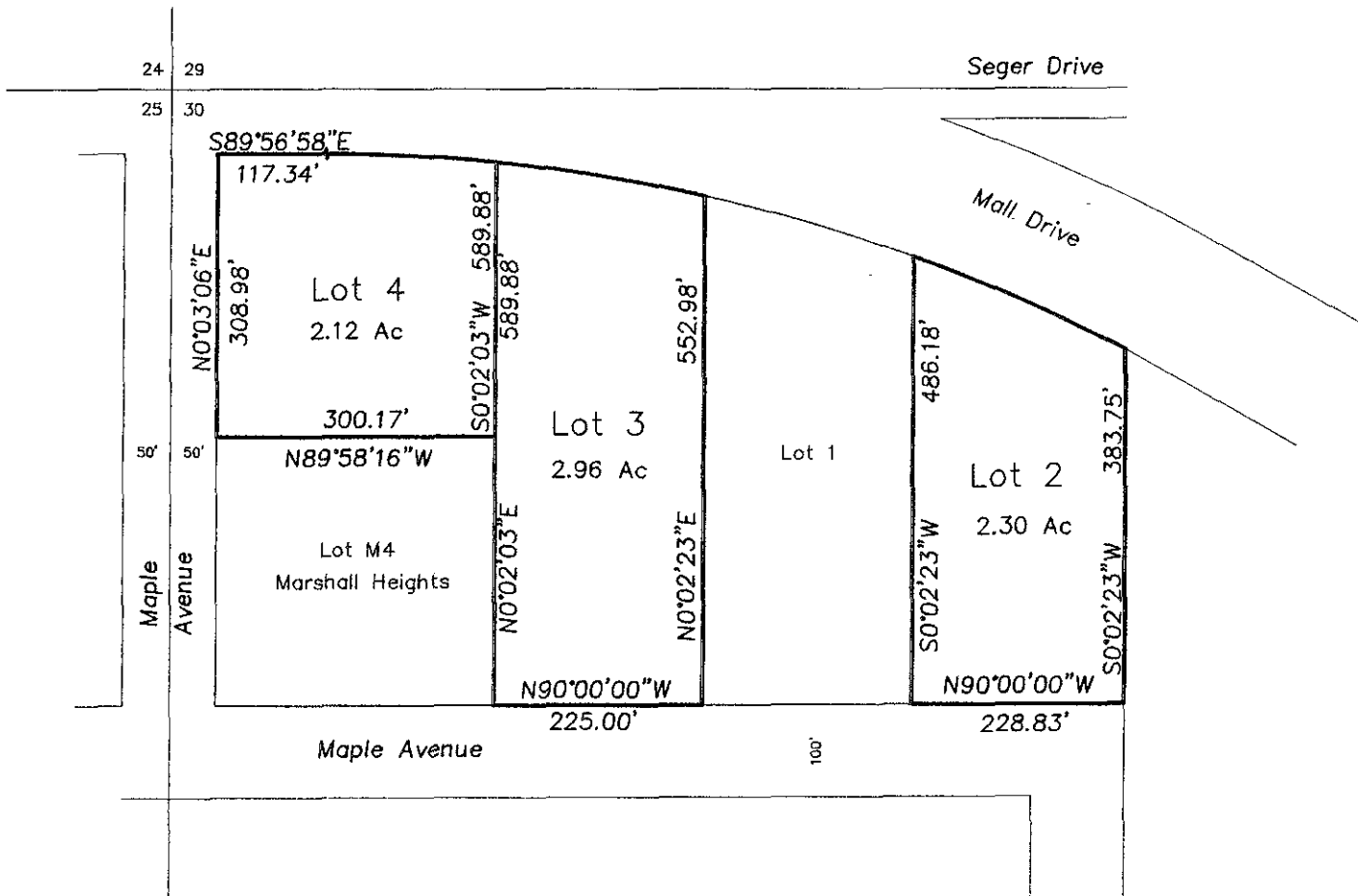
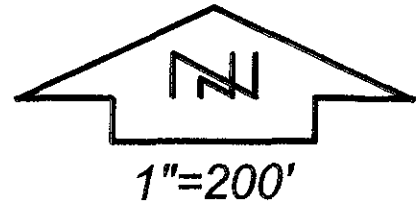


## LOTS 2, 3 AND 4 OF LJS SUBDIVISION

(FORMERLY A PORTION OF THE UNPLATTED BALANCE OF THE NW1/4 OF SECTION 30, T2N, R8E, BHM)

LOCATED IN THE NW1/4 OF SECTION 30, T2N, R8E, BHM,  
RAPID CITY, PENNINGTON COUNTY, SOUTH DAKOTA



# PRELIMINARY

RECEIVED

OCT 2 2006