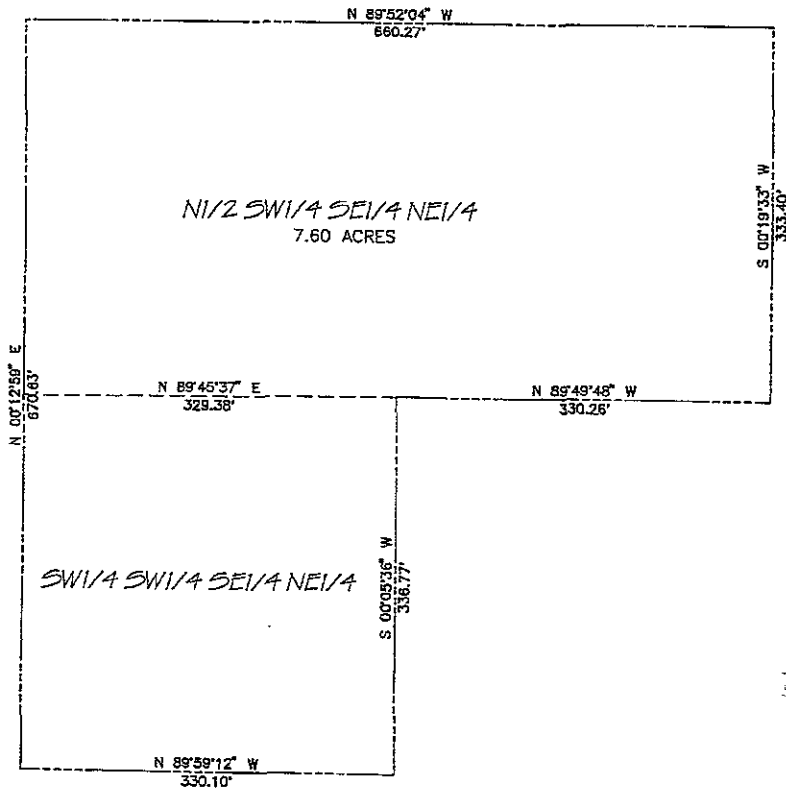


06SV064

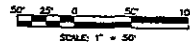
TRACT A OF WRIGHT SUBDIVISION LOCATED IN THE N1/2 SW1/4 SE1/4 NE1/4 AND THE SW1/4 SW1/4 SE1/4 NE1/4 OF SECTION 15, T.1N., R.7E., B.H.M. CITY OF RAPID CITY, PENNINGTON COUNTY, SOUTH DAKOTA




RECEIVED

OCT 13 2006

Rapid City Growth  
Department



  
**DREAM DESIGN INTERNATIONAL, INC.**  
 PROFESSIONAL STRUCTURAL & CIVIL ENGINEERING CONSULTANTS  
 608 MARSH ST. SUITE 4, RAPID CITY, SD 57701  
 PH. 605-338-5339 FAX. 605-338-9944 E-MAIL: rapidcity@dreamdesigninc.com

PROJECT NO.	04-043
DESIGNED BY	ASLETH
PLANNED BY	ASLETH
SCALE	AS SHOWN
DATE	10/13/06
PROJECT NO.	04-043
DATE	10/13/06

TRACT A OF  
WRIGHT SUBDIVISION  
LAYOUT PLAN