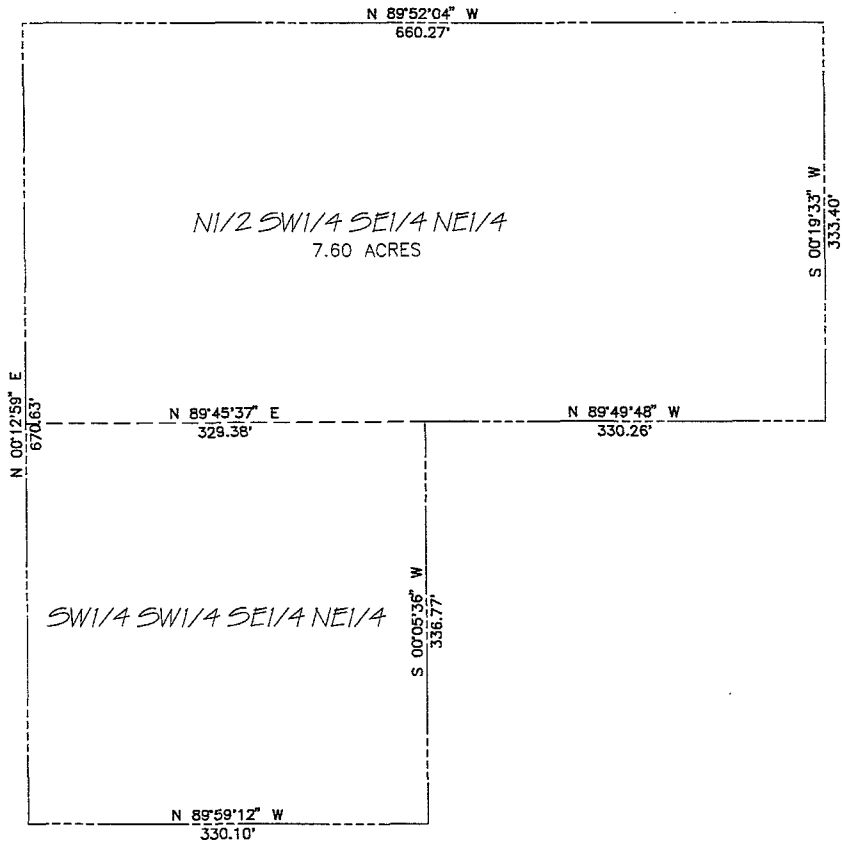


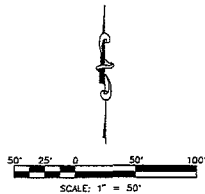
TRACT A OF WRIGHT SUBDIVISION LOCATED IN THE N1/2 SW1/4 SE1/4 NE1/4 AND THE SW1/4 SW1/4 SE1/4 NE1/4 OF SECTION 15, T.1N., R.7E., B.H.M. CITY OF RAPID CITY, PENNINGTON COUNTY, SOUTH DAKOTA



RECEIVED

SEP 08 2006

Rapid City Growth
Management Department



DREAM DESIGN INTERNATIONAL, INC.
PROFESSIONAL STRUCTURAL & CIVIL ENGINEERING CONSULTANTS
508 KANSAS CITY ST., SUITE 1, RAPID CITY, SD 57501
PH. 605-348-8334 FAX 605-348-8346 EMAIL: info@dreamdesigninc.com

PROJECT #:	06-0433
DESIGNED BY:	ARETH
CHECKED DATE:	9-06
DRAWN BY:	JOS
APPROVED BY:	ARETH
DATE:	9-06

TRACT A OF
WRIGHT SUBDIVISION
LAYOUT PLAT