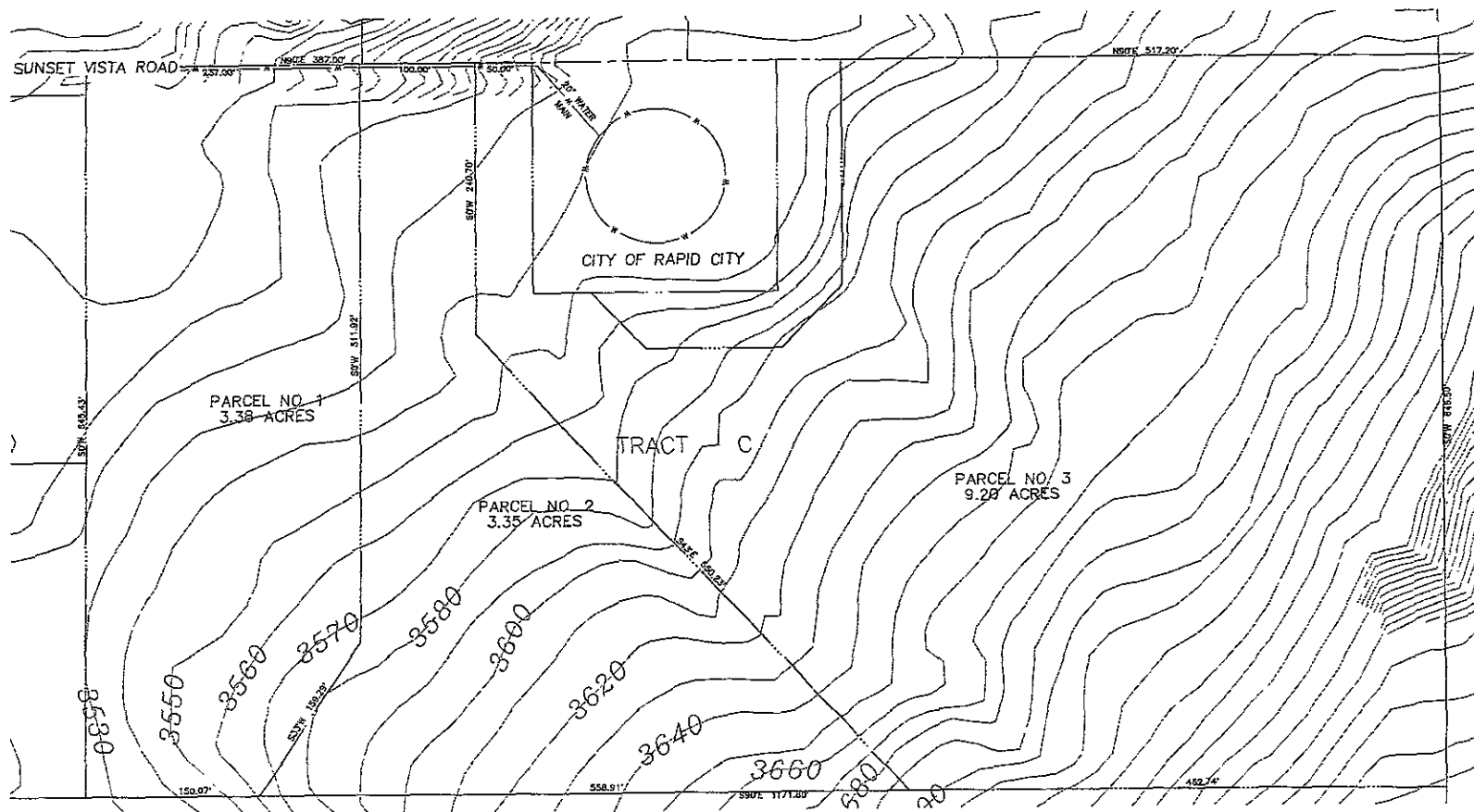


# ARROWHEAD VISTA SUBDIVISION

## LAYOUT PLAT

FOR LOTS 1, 2, AND 3 OF TRACT C LOCATED IN  
THE NW<sup>1</sup>/<sub>4</sub>NE<sup>1</sup>/<sub>4</sub> OF SECTION 15, T1N, R7E, BHM  
RAPID CITY, PENNINGTON COUNTY, SOUTH DAKOTA



RECEIVED  
 SEP 27 2006  
 Rapid City Planning  
 & Management Department

SCALE: 1"=100'

PARCEL NO. 1 ACREAGE = 3.38 ACRES  
 PARCEL NO. 2 ACREAGE = 3.35 ACRES  
 PARCEL NO. 3 ACREAGE = 9.20 ACRES  
 TOTAL ACREAGE = 15.93 ACRES

ARROWHEAD VISTA SUBDIVISION  
 PROJECT NO. 06-0422  
 DATE: SEPTEMBER 25, 2006  
 SHEET 1 OF 1

**DREAM DESIGN INTERNATIONAL, INC.**  
 PROFESSIONAL STRUCTURAL & CIVIL ENGINEERING CONSULTANTS  
 824 KANSAS CITY ST., SUITE 4, RAPID CITY, SD 57701  
 PH. 605-348-0538 FAX. 605-348-9545 EMAIL: [en@dreamdesigninc.com](mailto:en@dreamdesigninc.com)