

PRELIMINARY

RECEIVED

SEP 01 2006

Rapid City Growth Management Department

Plat of Elks Meadows Subdivision - including
 Lots 1 thru 5 of Block 1,
 Lots 1 thru 10 of Block 2,
 Lots 1 thru 4 of Block 3,
 Lots 1 and 26 of Block 6,
 Lot 1 of Block 7,
 Lots 1 and 36 thru 41 of Block 8,
 Lots 1 thru 11 of Block 9,
 Lots 1 thru 13 of Block 10,
 Lots 1 thru 31 of Block 11 and
 Lots 1 thru 23 of Block 12,
 Easements
 and Dedicated Right-of-Way

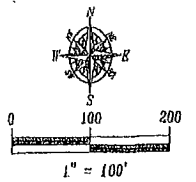
located in the E1/2 NE1/4 of Section 21 and
 the E1/2 SE1/4 of Section 16
 T1N, R0E, B1M, Rapid City, Pennington County, South Dakota

Prepared by
 Plak Land Surveying & Consulting Engineers, Inc.
 P.O. Box 0164
 Rapid City, SD 57700
 (605) 348-1838
 Project # 06-05-07

- Legend
- = Found Survey Monument as noted
 - = Found Brass Cap (BHM - 1949)
 - = Set Rebar/Top "BY FISK LS 6565"
 - = Cyclone Ditch Easement

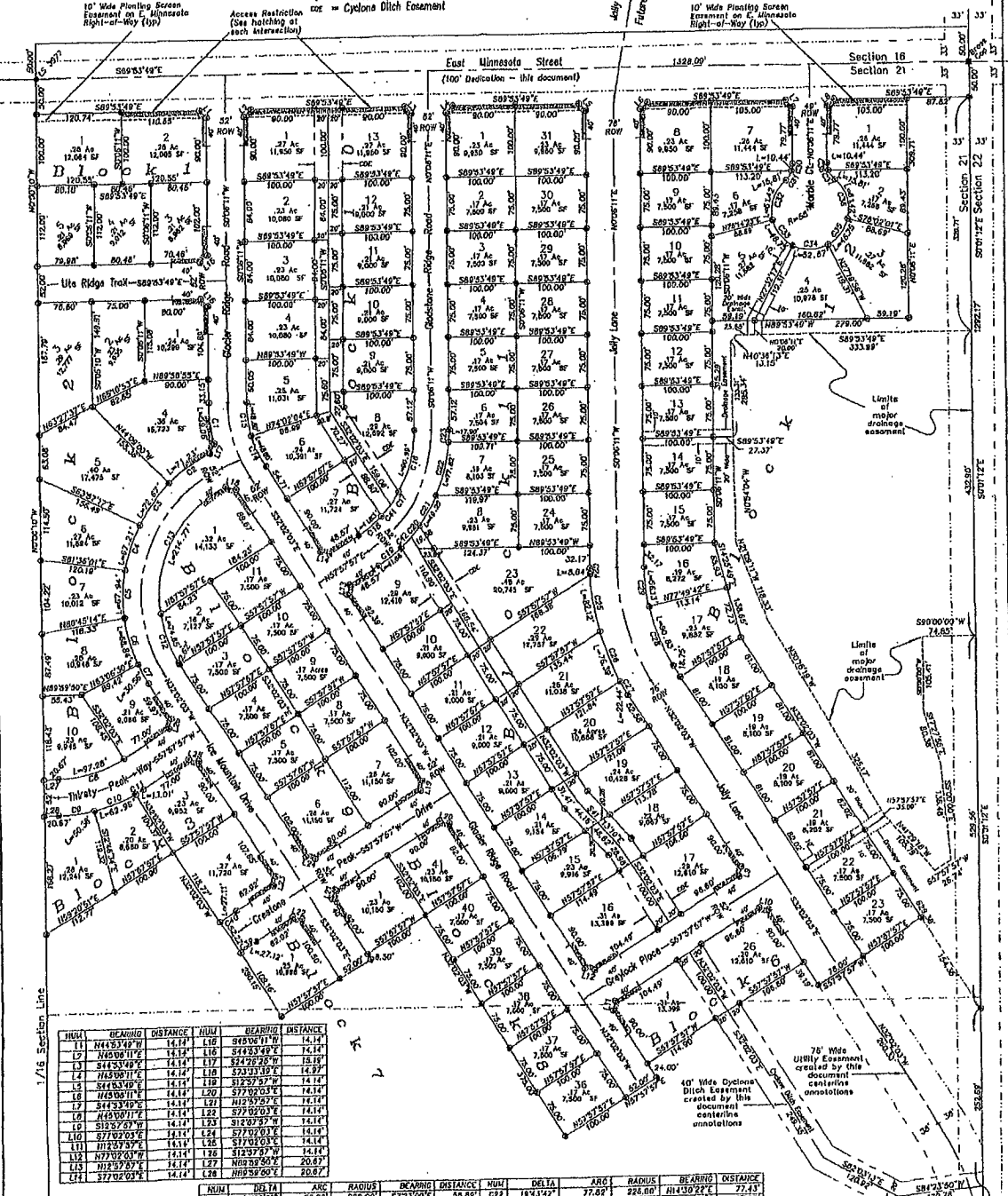
All major drainage easements shown herein shall be kept free of all obstructions including but not limited to buildings, walls, fences, hedger, trees & shrubs. These easements grant to all public authorities the right to construct, operate, maintain, inspect, and repair such improvements and structures as it deems expedient to facilitate drainage from any source.

NOTE: The rear lot lines in Block 10 and portions of Block 11 represent the centerline of the 40' Wide Cyclone Ditch Easement (labeled CDC). The side lot line annotations are to the Witness Corners located at the edge of the easement, at Utility and Minor Drainage Easements on the interior sides of all lot lines



June 7, 2006
 Rev. August 30, 2006
 Basis of Bearings
 Assumed from Previous Surveys
 and confirmed by
 Solar Observation

East Minnesota Street, Glacier Ridge Road, Goodstone Ridge Road, Jolly Lane, Marble Court, Ice Mountain Drive, Ute Ridge Trail, Thrifty Peak Way, Crastone Peak Drive and Graylock Plaza, containing 10.66 Acres more or less, as shown hereon are hereby dedicated as public right-of-ways. However, such dedication shall not be construed to mean a donation of the fee of said land.



LINE	BEARING	DISTANCE	LINE	BEARING	DISTANCE
11	N41°57'47"W	14.14	L16	S89°53'49"E	14.14
12	N60°00'00"W	14.14	L17	S24°29'26"W	15.89
13	N43°30'00"W	14.14	L18	S73°31'39"E	14.29
14	N12°00'00"W	14.14	L19	S12°52'57"E	14.14
15	S41°33'49"E	14.14	L20	S77°02'03"E	14.14
16	N43°30'00"W	14.14	L21	N12°57'02"E	14.14
17	S12°57'02"E	14.14	L22	S12°57'02"E	14.14
18	S77°02'03"E	14.14	L23	S77°02'03"E	14.14
19	N12°57'02"E	14.14	L24	S77°02'03"E	14.14
20	N12°57'02"E	14.14	L25	S77°02'03"E	14.14
21	N12°57'02"E	14.14	L26	S77°02'03"E	14.14
22	N73°00'00"W	14.14	L27	N63°29'50"E	20.87
23	N12°57'02"E	14.14	L28	N12°57'02"E	20.87

LINE	DELTA	ARC	RADIUS	BEARING	DISTANCE	LINE	DELTA	ARC	RADIUS	BEARING	DISTANCE
G1	14°59'21"	71.23	226.00	S73°00'00"E	18.61	G2	18°43'24"	72.82	226.00	N41°50'22"E	77.43
G2	18°43'24"	72.82	226.00	S84°52'47"W	70.91	G3	43°29'20"	17.80	226.00	N2°22'21"E	17.90
G3	16°33'21"	72.87	226.00	S35°50'19"W	72.30	G4	12°29'48"	8.61	338.00	N2°22'21"E	8.41
G4	17°07'17"	67.21	226.00	S18°54'30"W	69.80	G5	13°19'13"	82.12	338.00	S2°29'21"E	81.92
G5	17°31'30"	67.21	226.00	S12°00'00"W	67.21	G6	12°36'51"	78.38	338.00	S2°29'21"E	78.22
G6	17°17'07"	68.81	226.00	S15°53'42"E	68.87	G7	3°49'13"	25.44	338.00	S3°07'01"E	25.33
G7	14°42'29"	30.88	226.00	S70°09'40"E	30.83	G8	19°01'45"	60.83	226.00	S2°29'21"E	60.02
G8	32°07'23"	82.28	174.00	S12°38'53"E	88.01	G9	1°19'22"	56.13	226.00	S2°29'21"E	56.13
G9	2°02'24"	59.10	226.00	N13°38'19"E	50.28	G10	19°56'04"	10.41	30.00	N10°14'13"E	10.39
G10	15°57'38"	63.89	226.00	N69°14'33"E	62.72	G11	20°17'02"	10.41	30.00	N10°14'13"E	10.39
G11	31°19'31"	13.01	226.00	N18°58'29"E	13.01	G12	61°29'23"	41.23	30.00	N10°14'13"E	41.23
G12	24°14'48"	71.63	174.00	S19°14'25"E	74.08	G13	48°42'03"	46.75	68.00	S18°04'40"E	43.38
G13	24°14'48"	71.63	174.00	S27°54'21"W	201.33	G14	81°02'14"	62.87	36.00	S29°53'40"E	50.68

76' Wide Utility Easement created by this document contains annotations
 40' Wide Cyclone Ditch Easement created by this document contains annotations
 10' Wide Planting Screen Easement on E. Minnesota Right-of-Way (top)
 Limits of major drainage easement
 Limits of major drainage easement
 1" = 100'
 L-220610
 G-220610
 G-220610