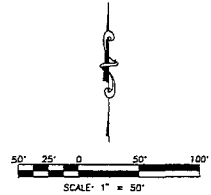
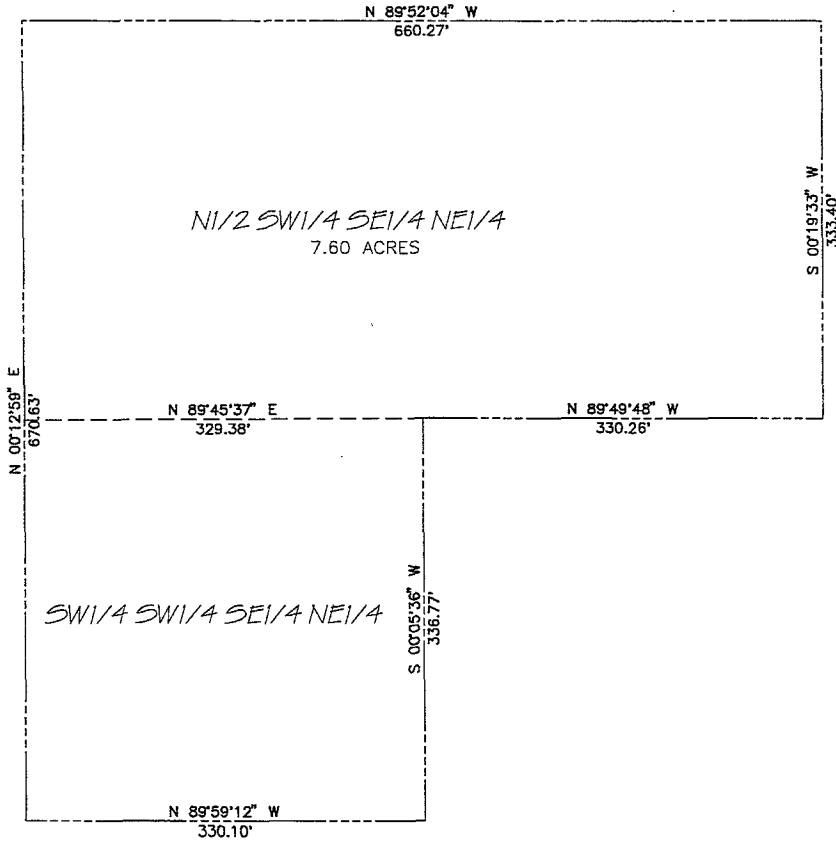



TRACT A OF WRIGHT SUBDIVISION LOCATED IN THE N1/2 SW1/4 SE1/4 NE1/4 AND THE SW1/4 SW1/4 SE1/4 NE1/4 OF SECTION 15, T.1N., R.7E., B.H.M. CITY OF RAPID CITY, PENNINGTON COUNTY, SOUTH DAKOTA

RECEIVED
 SEP 08 2006
 Rapid City Growth
 Management Department




DREAM DESIGN INTERNATIONAL, INC.
 PROFESSIONAL STRUCTURAL & CIVIL ENGINEERING CONSULTANTS
 628 MASSA CITY ST. SUITE 1, RAPID CITY, SD 57701
 PH. 605-341-5028 FAX. 605-341-0645 EMAIL: rj@dreamdesigninc.com

PROJECT # 05-0143	REV 1
DRAWN BY: ALETH	REV 2
CHECKED BY: J. MOSE	REV 3
DATE: 9-08	REV 4
SCALE: 1" = 50'	

TRACT A OF
WRIGHT SUBDIVISION
LAYOUT PLAN