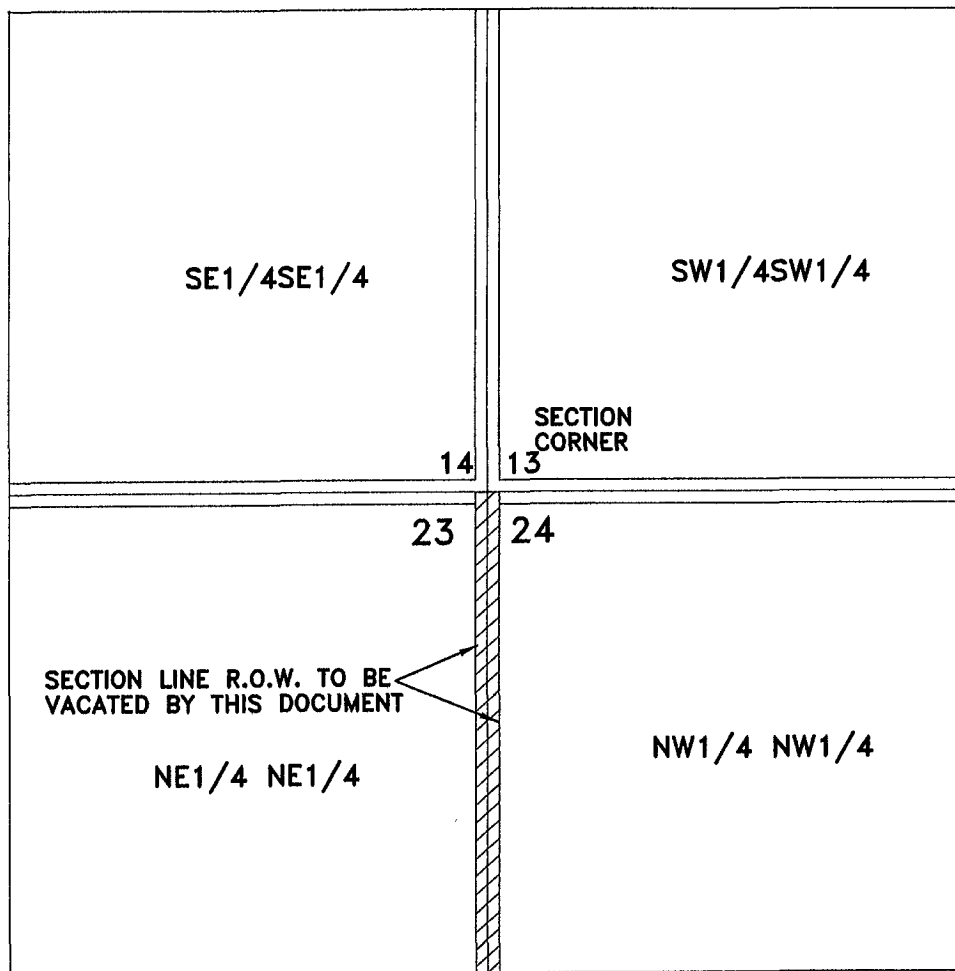


EXHIBIT A

VACATION OF SECTION LINE RIGHT-OF-WAY
NE1/4 NE1/4 OF SECTION 23 AND NW1/4 NW1/4 OF SECTION 24
T1N, R7E, B.H.M. RAPID CITY, PENNINGTON COUNTY, SOUTH DAKOTA



Prepared by:
Hanson Surveying & Mapping
832 Horace Mann Drive
Rapid City, SD 57701
605-388-9652

8/22/06



NOT TO
SCALE